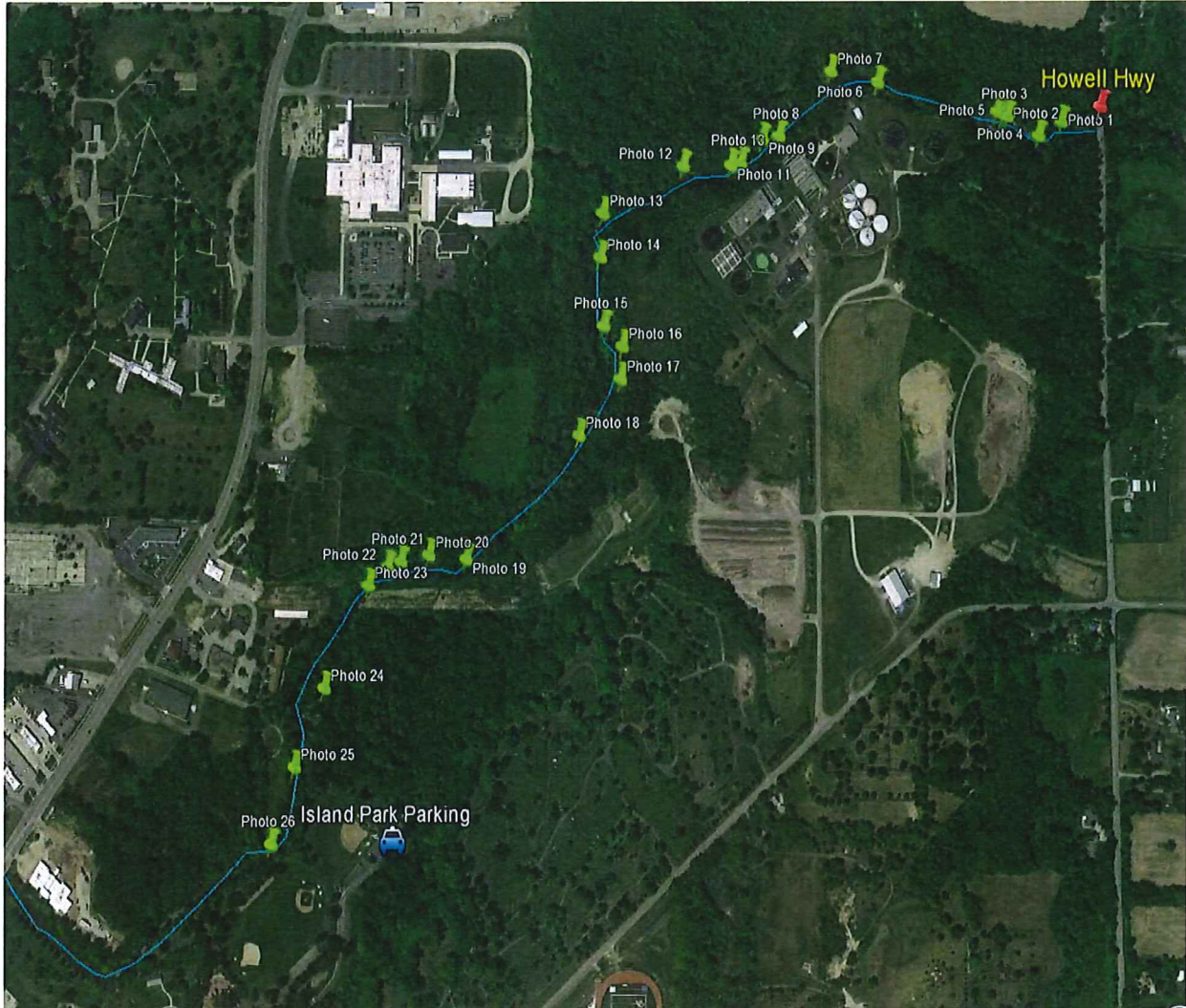


APPENDIX D –

RIVER OBSTRUCTION INSPECTION PHOTOS

River Obstructions

Section 1: Howell Highway to Island Park



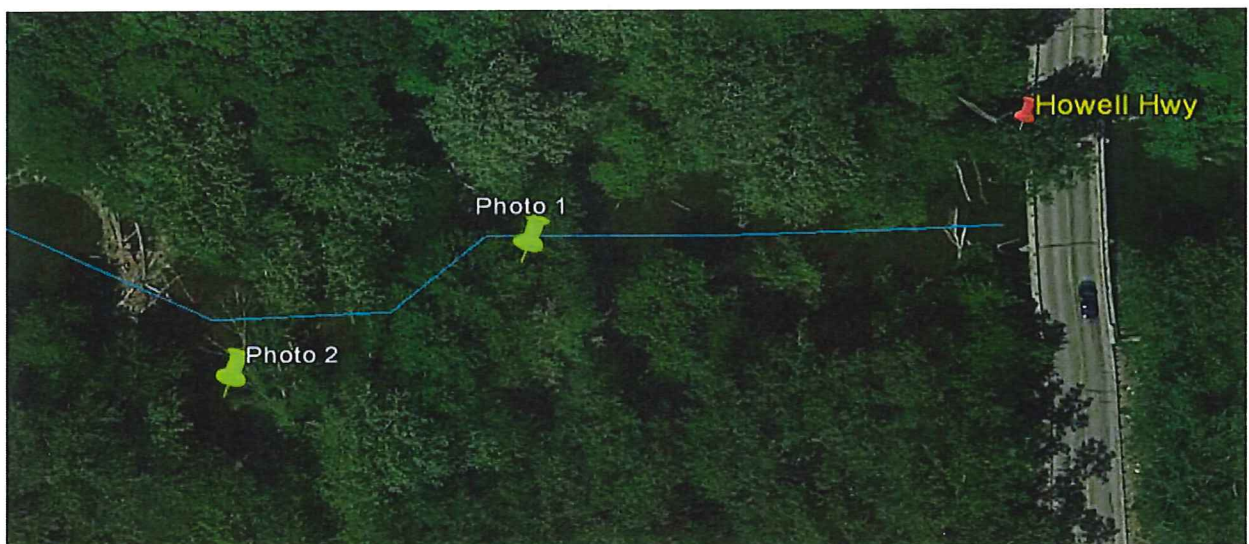
Locations of Obstacles to Be Removed in Section 1 (Marked with Green Pins)



Photo 1 (Section 1 - south bank looking north): Two partly submerged 5" diameter logs cross from one side of the river to the other



Photo 2 (Section 1 - south bank looking northwest): Branches and logs inhibiting river flow



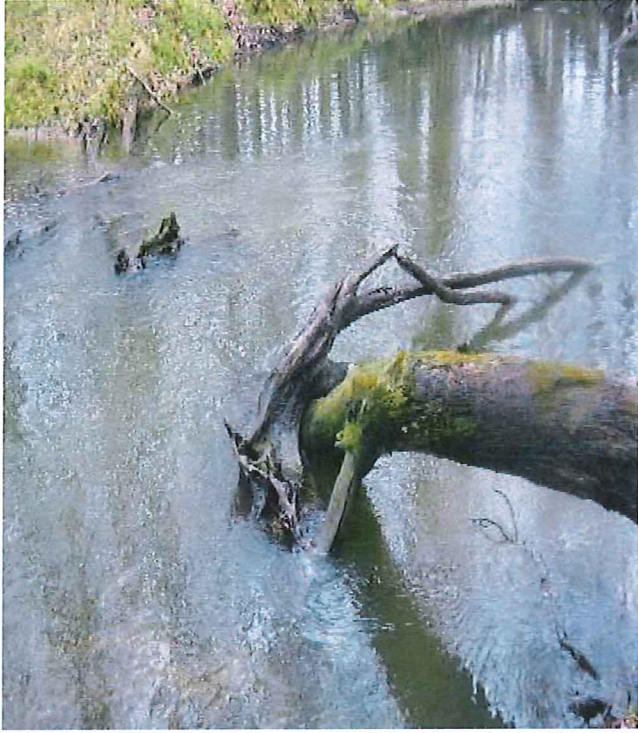


Photo 3 (Section 1 - south bank looking downstream): 10" down tree crossing river inhibiting passage



Photo 4 (Section 1 – south bank looking upstream): 8" down tree blocking river flow





Photo 5 (Section 1 - south bank looking upstream): 8" Down tree partially blocking passage for kayakers



Photo 6 (Section 1 - south bank looking downstream): Foot-diameter tree and a pile of branches blocking potential path of kayak





Photo 7 (Section 1 – south bank looking upstream): Floating tree in river with overhanging branches that impede flow



Photo 8 (Section 1 – south bank looking opposite side of river): Down tree blocking over half of river





Photo 9 (Section 1 – south bank looking downstream): Pipe from treatment plant overhanging over part of river



Photo 10 (Section 1 – south bank looking upstream) Trees blocking river on both sides of island

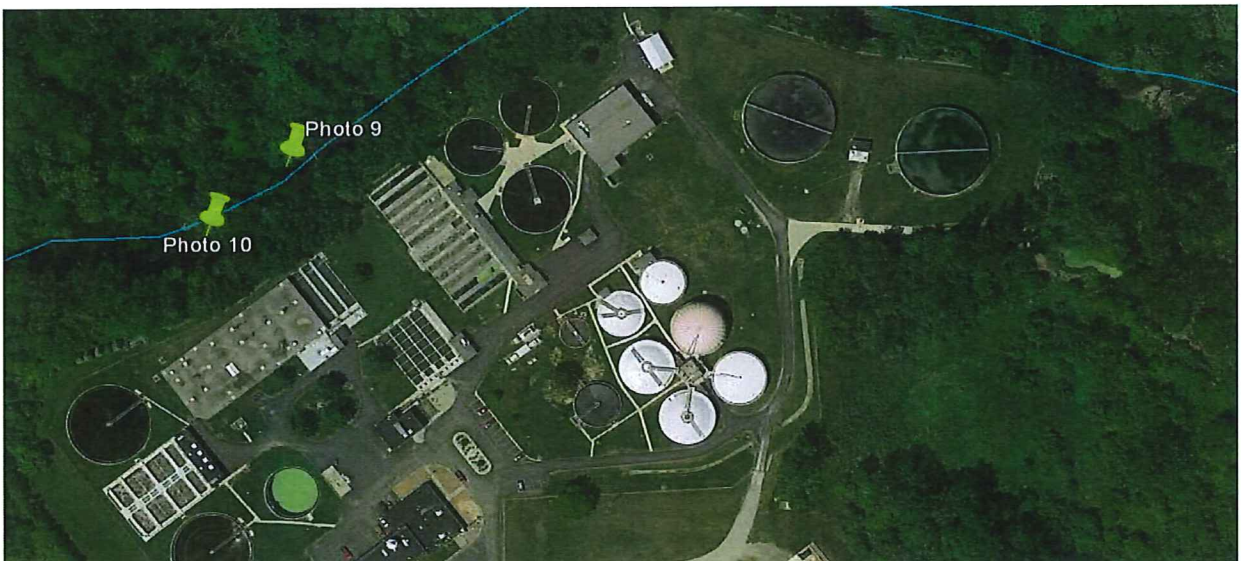




Photo 11 (Section 1 – south bank looking across river): Two 4" trees floating across half the breadth of the river



Photo 12 (Section 1 - south bank looking downstream): Tree submerged near southern bank of river

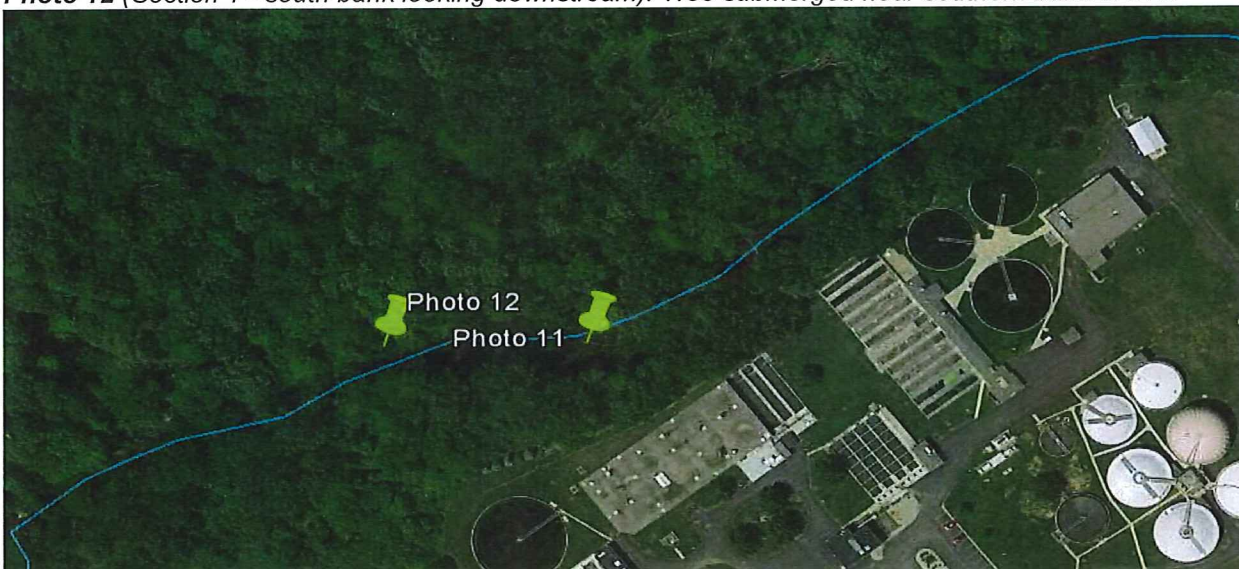




Photo 13 (Section 1 – south bank looking upstream): Overhanging tree partially obstructing path for kayak



Photo 14 (Section 1 – south bank looking across river): Overhanging branch and rock in river impeding path for kayak

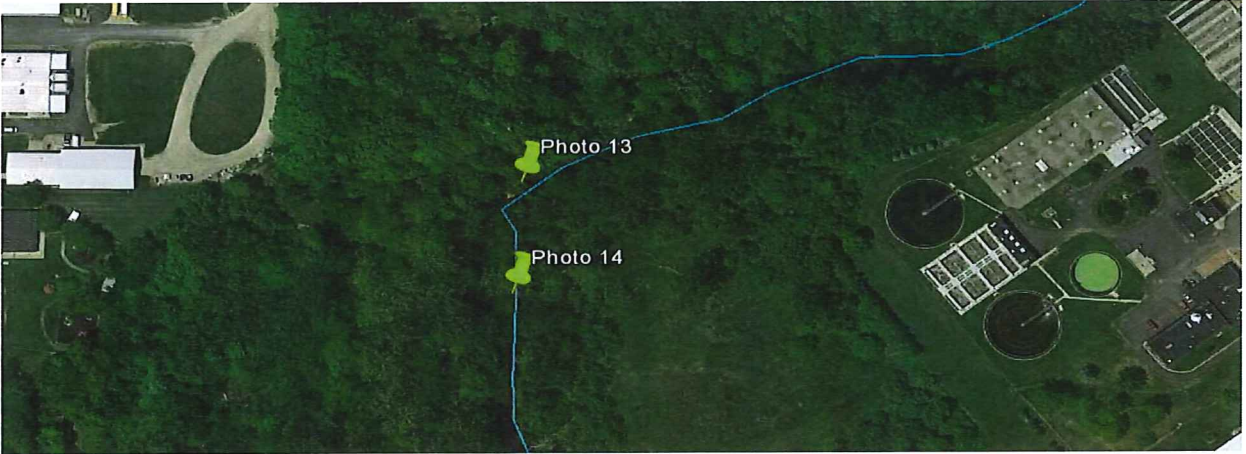
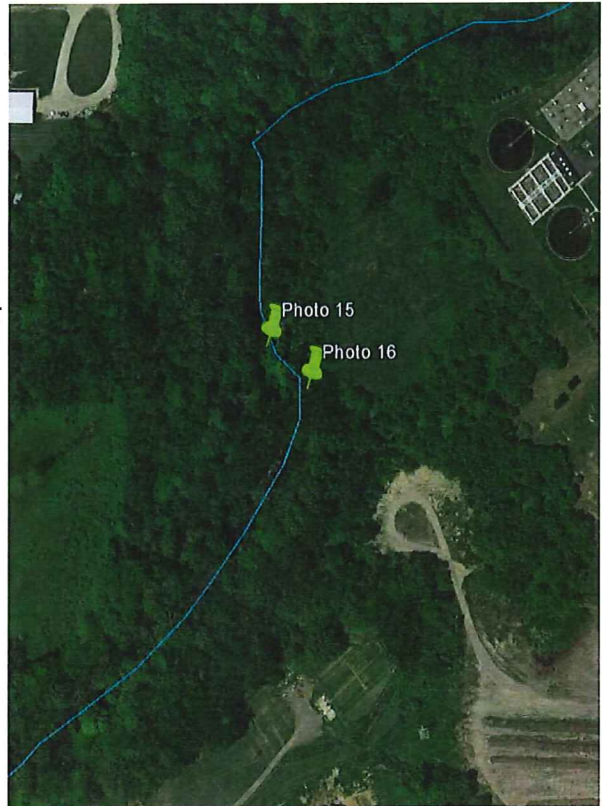




Photo 15 (Section 1 – east bank looking downstream):
Foot-diameter tree over river blocking path of kayak



Photo 16 (Section 1 - east bank looking upstream):
Large rocks under water impeding path of kayak



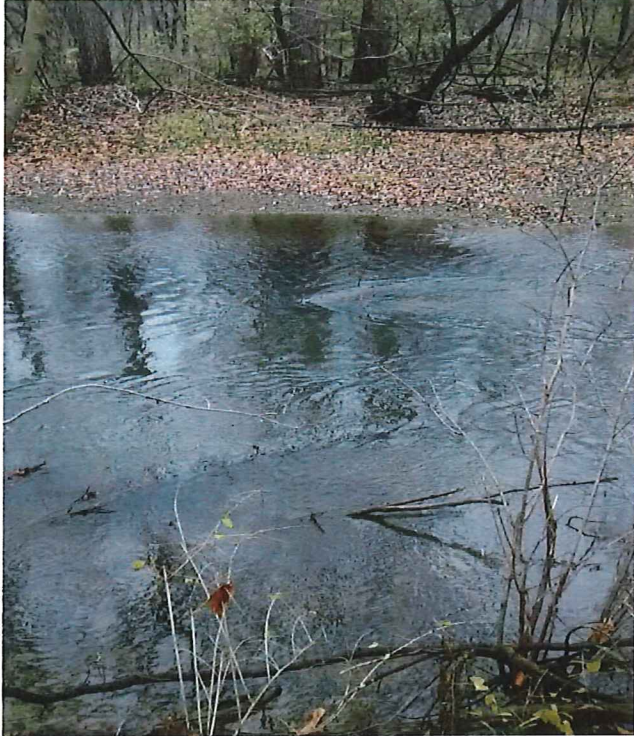


Photo 17 (Section 1 – east bank looking across river):
Large rocks and brush impeding passageway through river



Photo 18 (Section 1 - east bank looking across river):
Two 3"-diameter trees blocking passage over half the width of river

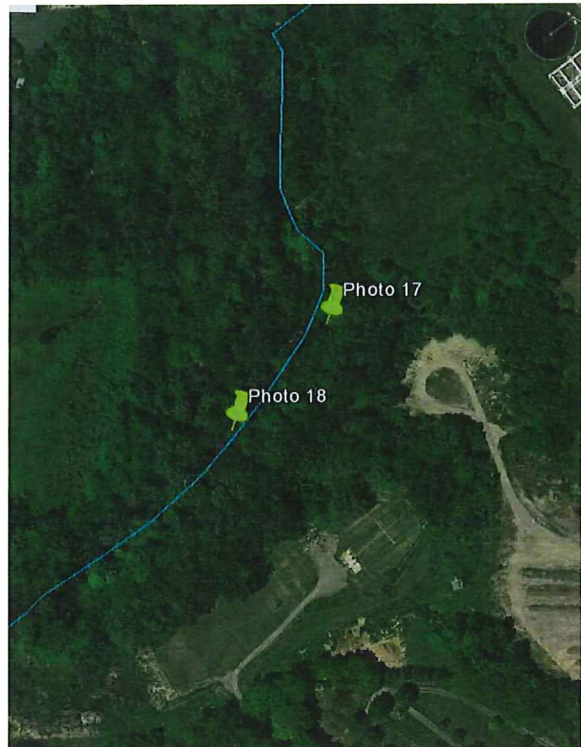




Photo 19 (Section 1 – south bank looking upstream):
Waterlogged tree in river possibly impeding kayak path



Photo 20 (Section 1 – south bank looking downstream):
Several large rocks in river



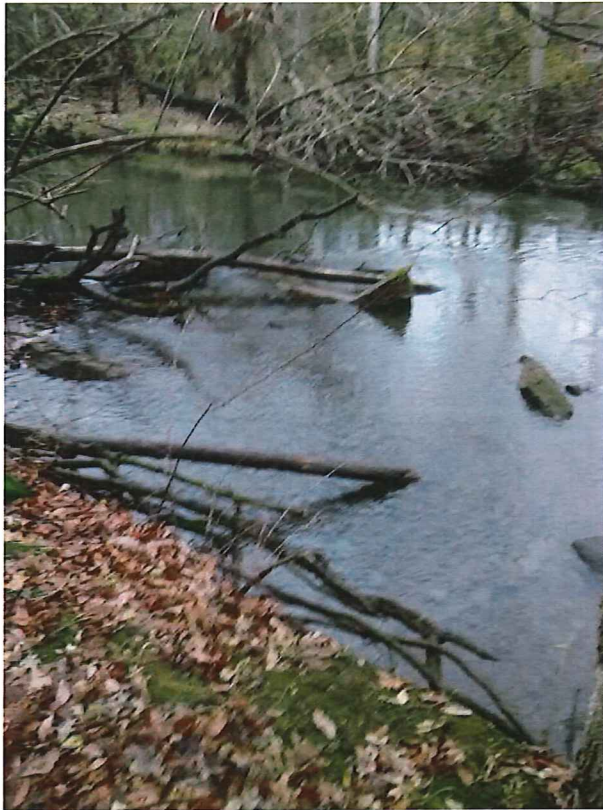
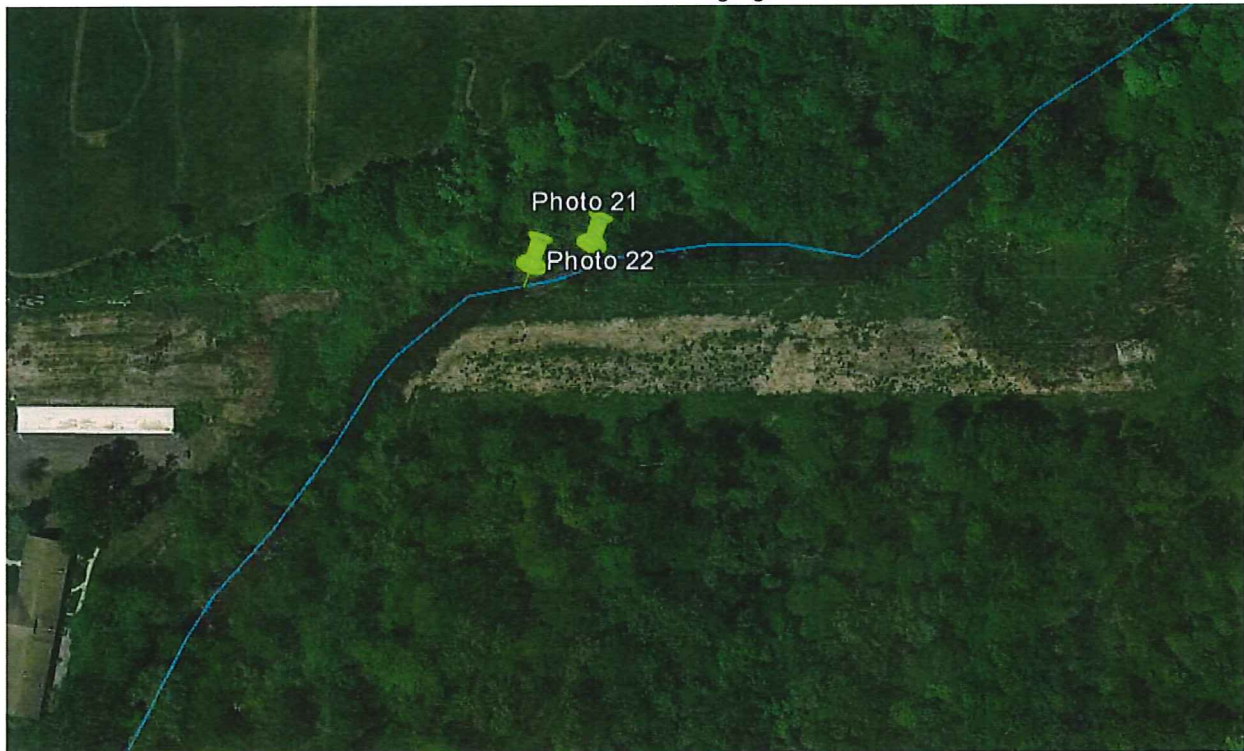


Photo 21 (Section 1—south bank looking upstream):
Rocks and tree brush blocking passage near bank



Photo 22 (Section 1 – south bank looking across river):
Boulders in river make kayak passage challenging



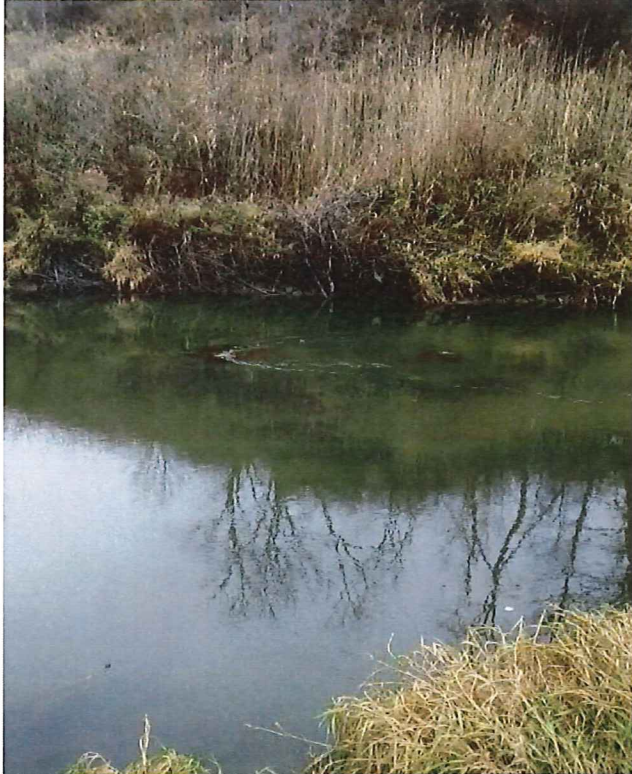


Photo 23 (Section 1 – east bank looking across river):
Boulders in various regions across river

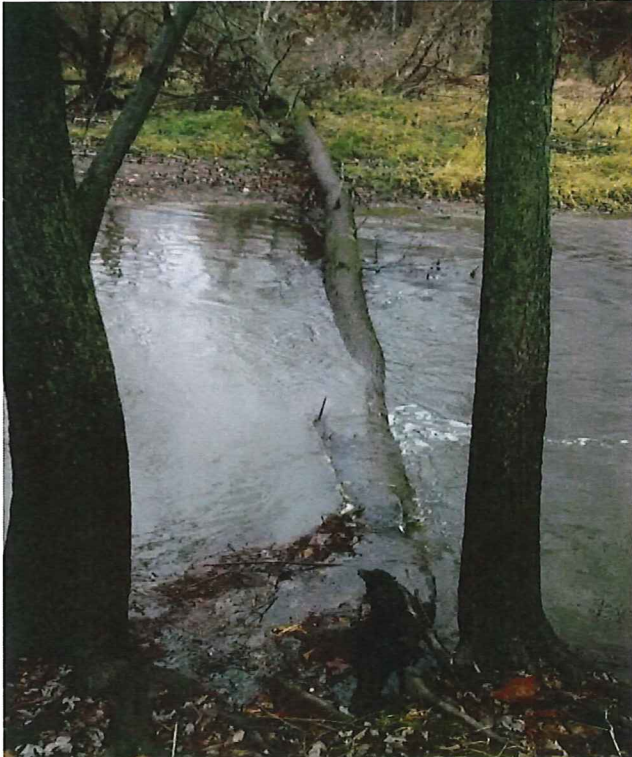


Photo 24 (Section 1 – east bank looking across river):
Tree obstructing river flow

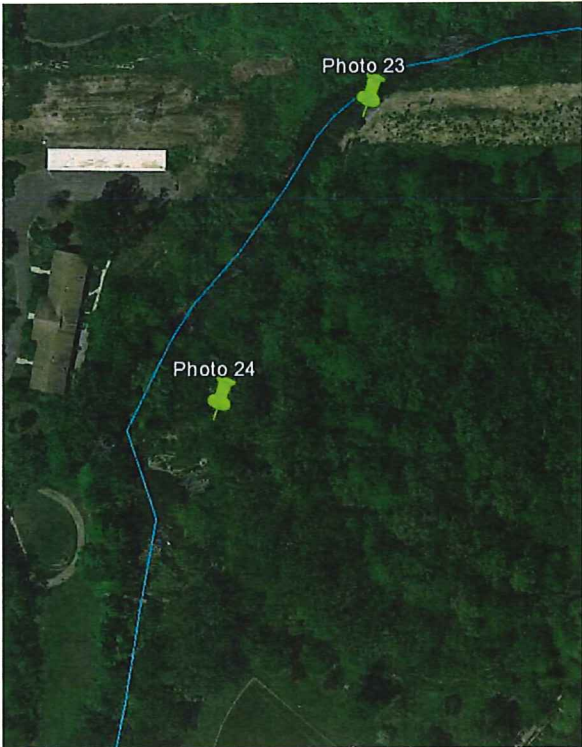




Photo 25 (Section 1 – east bank looking across river):
Tree pile on west bank of river

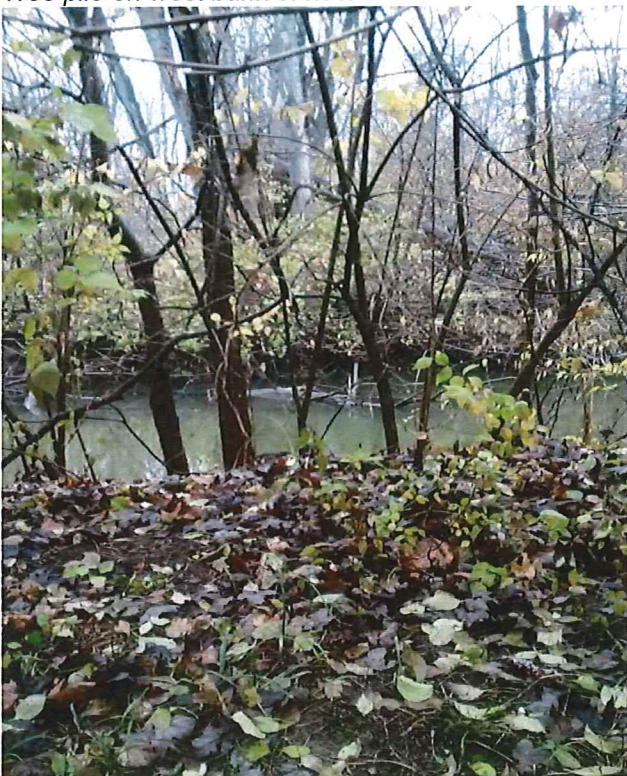


Photo 26 (Section 1 – bank near Island Park looking
across river): Tree in river inhibiting passage by kayak



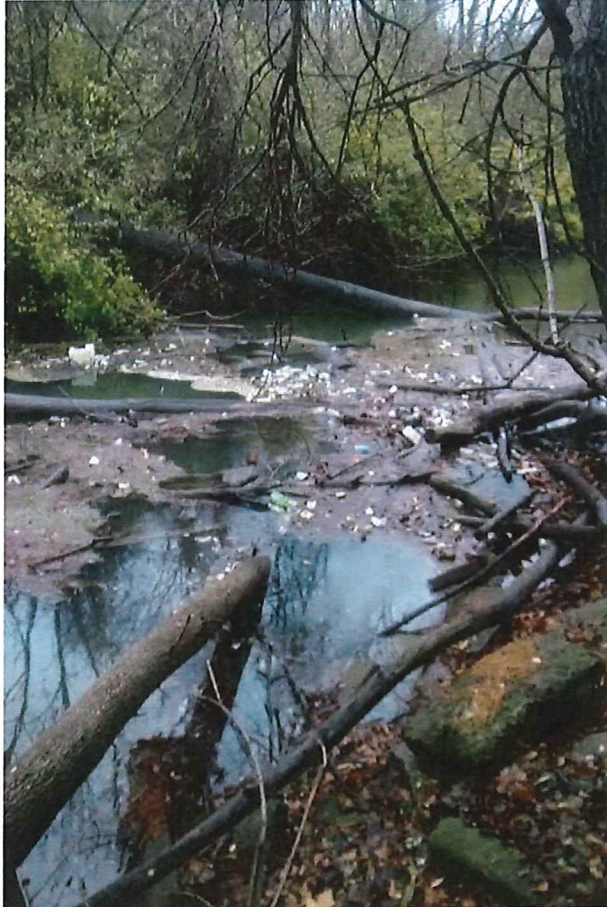
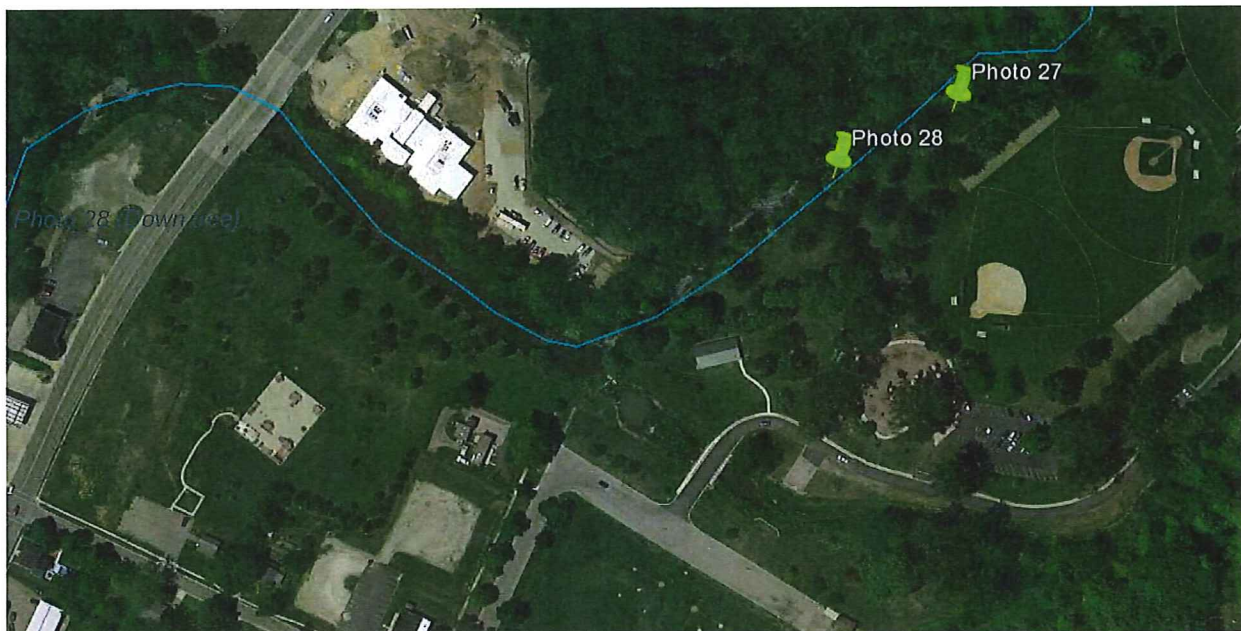


Photo 27 (Section 1 - bank near Island Park looking downstream): Tree and debris blocking kayak passage



Photo 28 (Section 1 - bank near Island Park looking downstream): Overhanging tree crossing river inhibiting passage by kayak



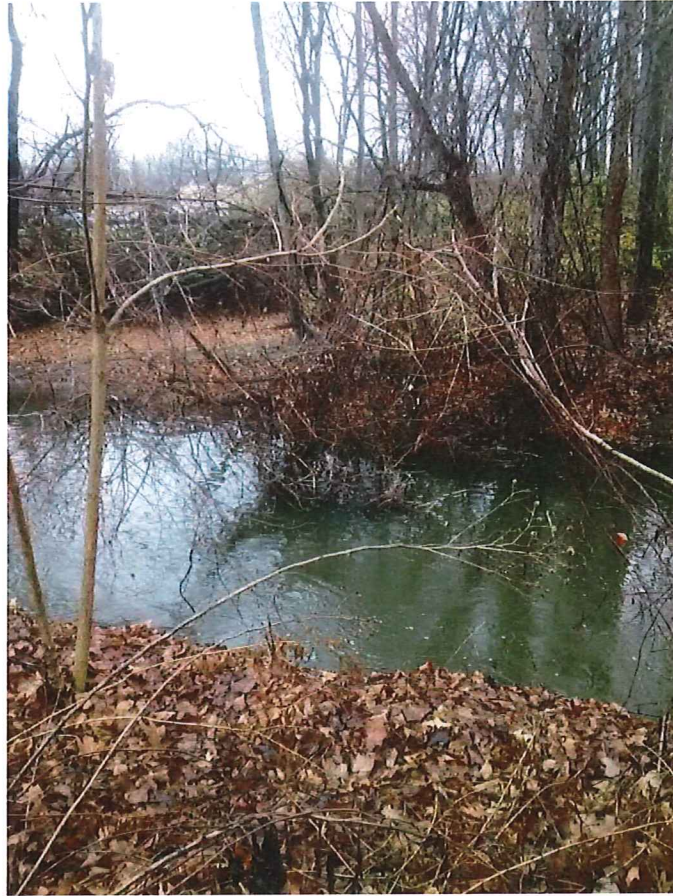
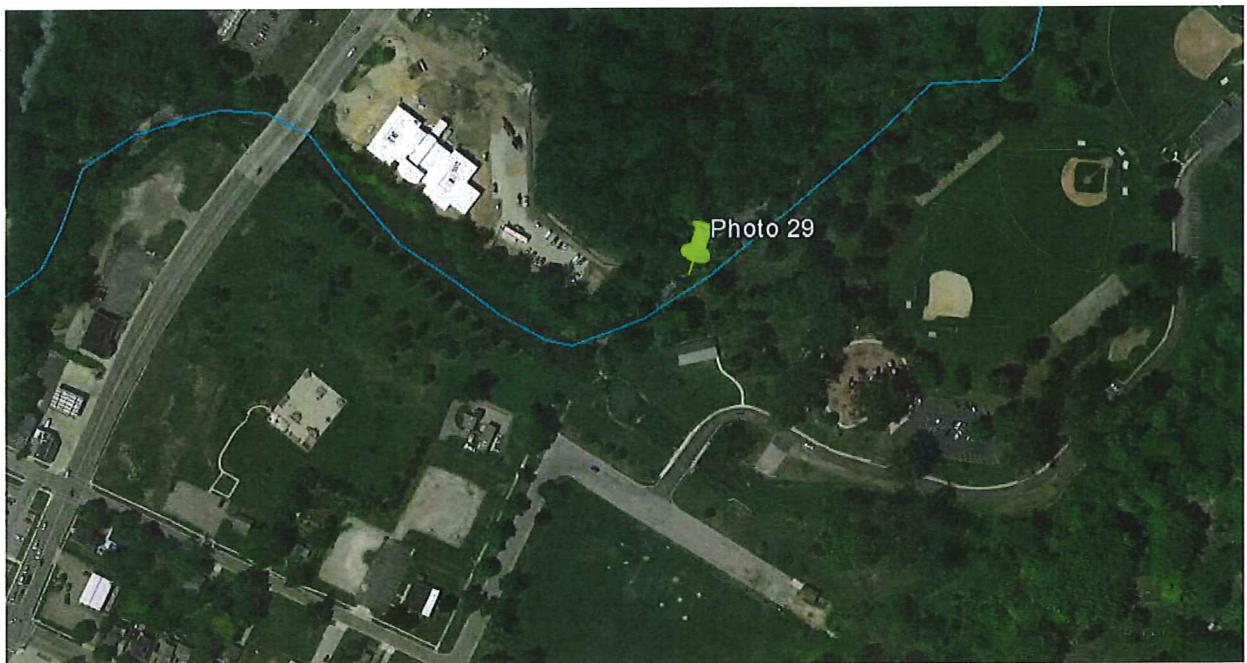
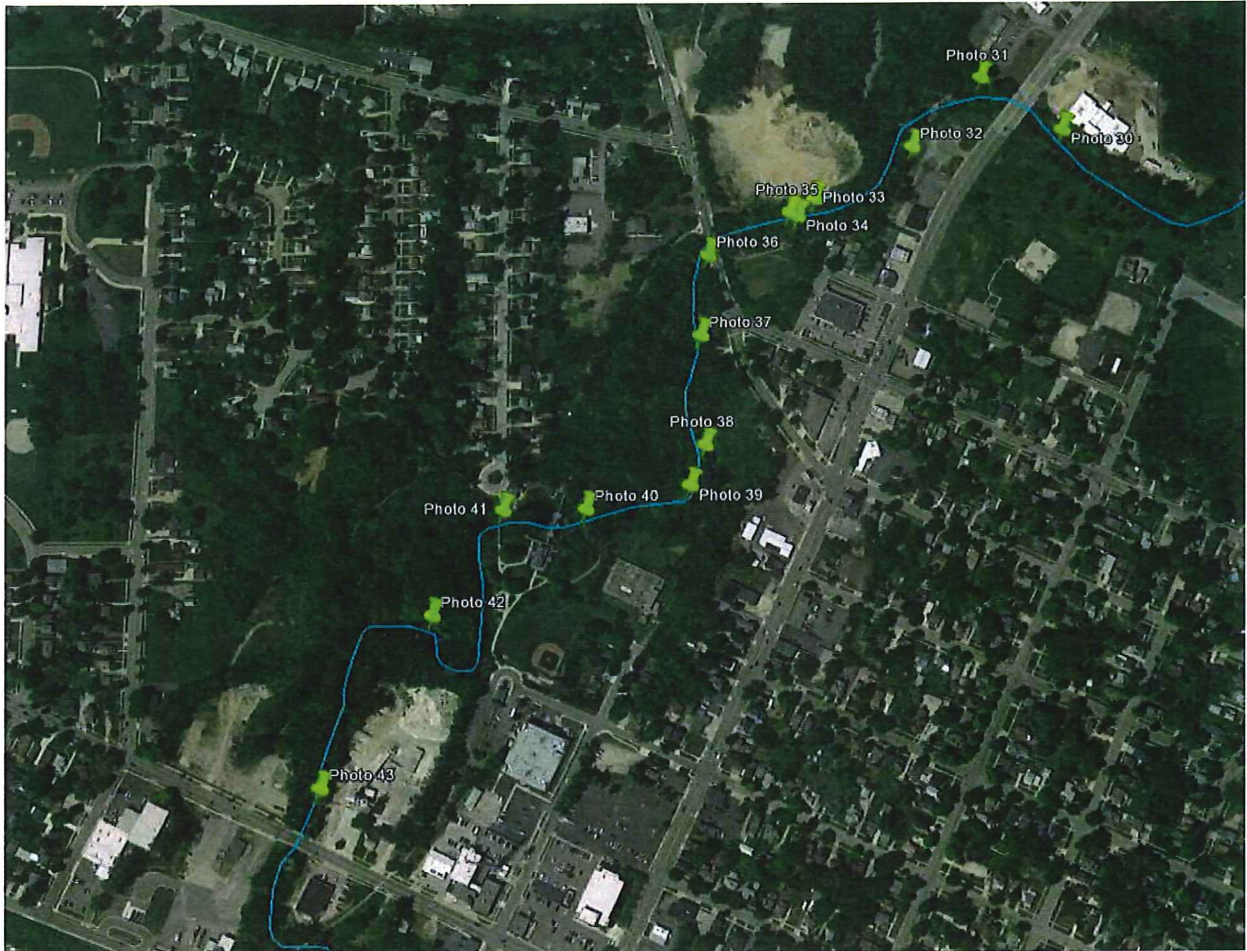


Photo 29 (Section 1 – bank near Island Park looking upstream): Low hanging tree obstructing kayak passage on far bank



Section 2: Island Park to Trestle Park



Locations of All the Obstacles within Section 2 (marked with green pins)



Photo 30 (Section 2 – south bank looking upstream): Three boulders and a tree creating obstacle for river navigation



Photo 31 (Section 2 – south bank looking north): Tree floating off of north bank creating navigational hazard on river

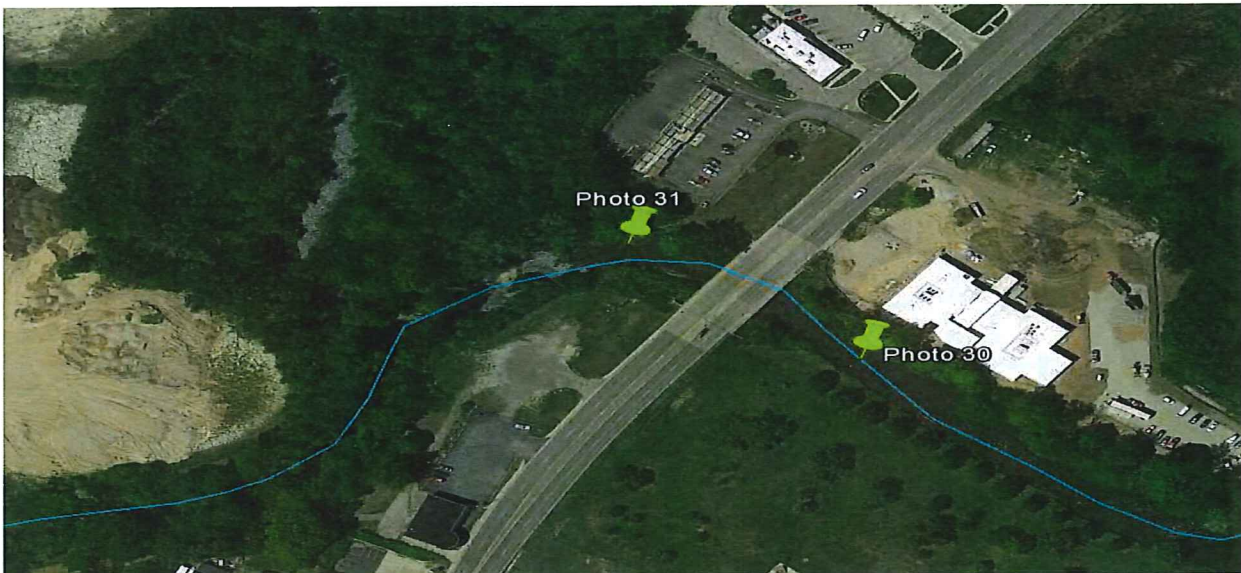
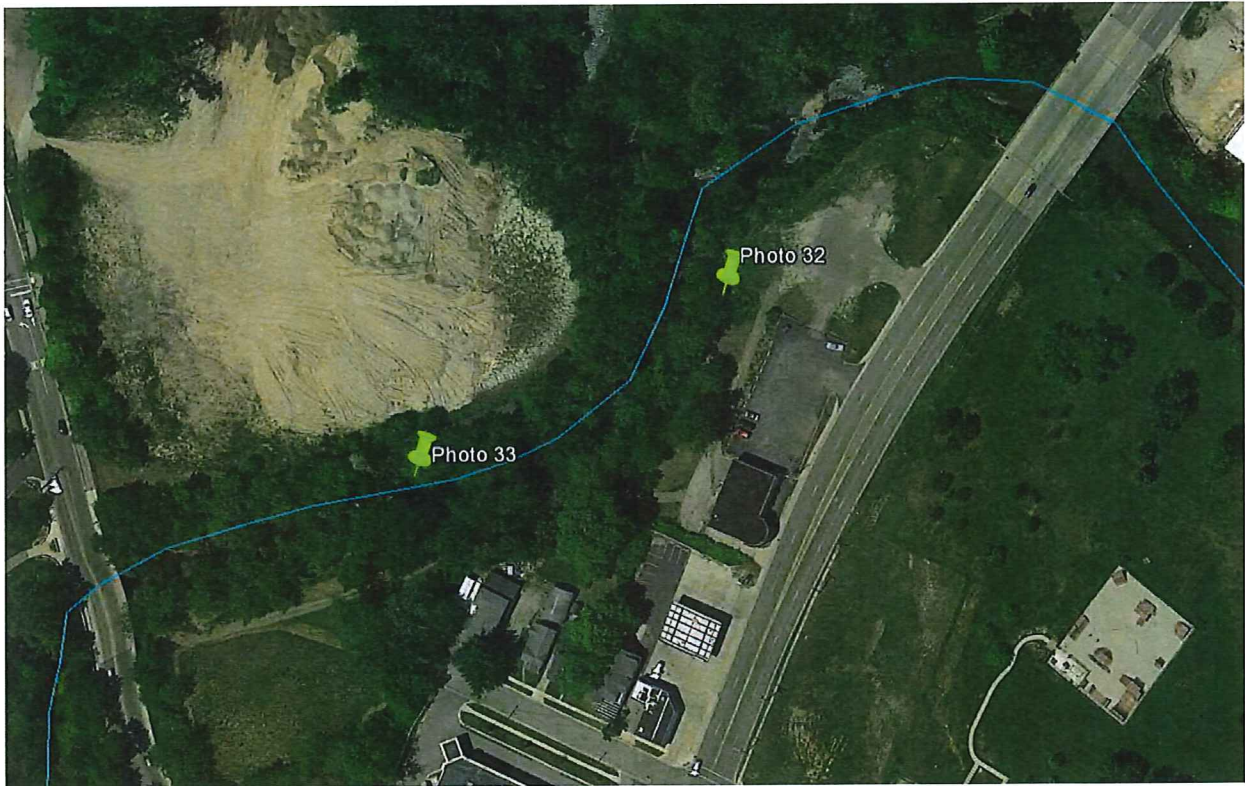




Photo 32 (Section 2 – east bank looking upstream):
Brush in water



Photo 33 (Section 2 – south bank looking across river):
Down tree near bank creating obstacle for navigation



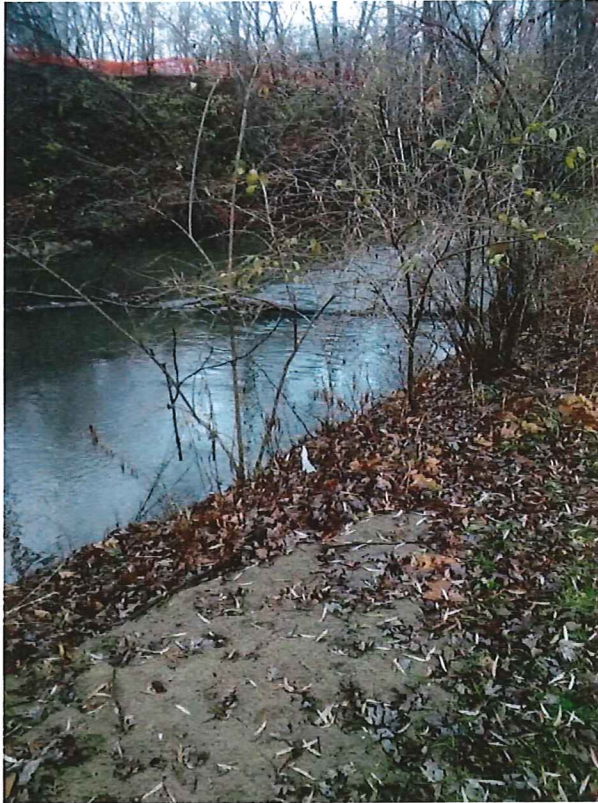


Photo 34 (Section 2 – south bank looking downstream): Downed tree impeding flow across river



Photo 35 (Section 2 – south bank looking downstream): Downed tree and rocks in river creating a navigation obstacle

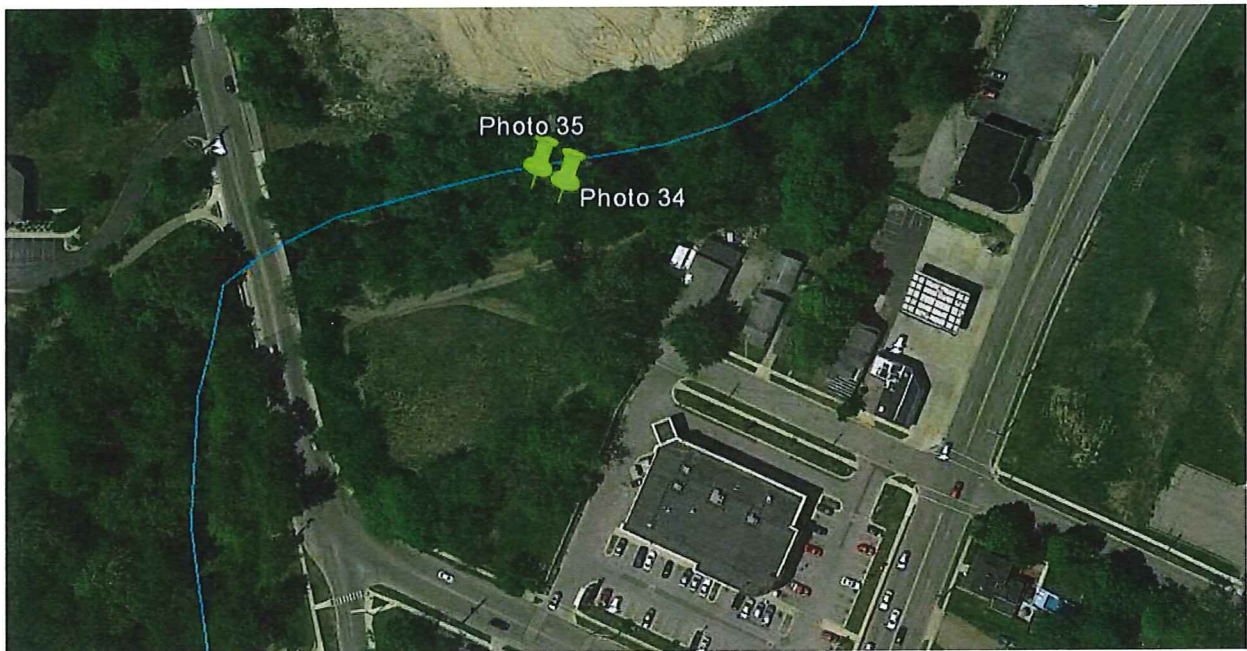




Photo 36 (Section 2 – east bank looking across river): Trees creating barrier for river navigation

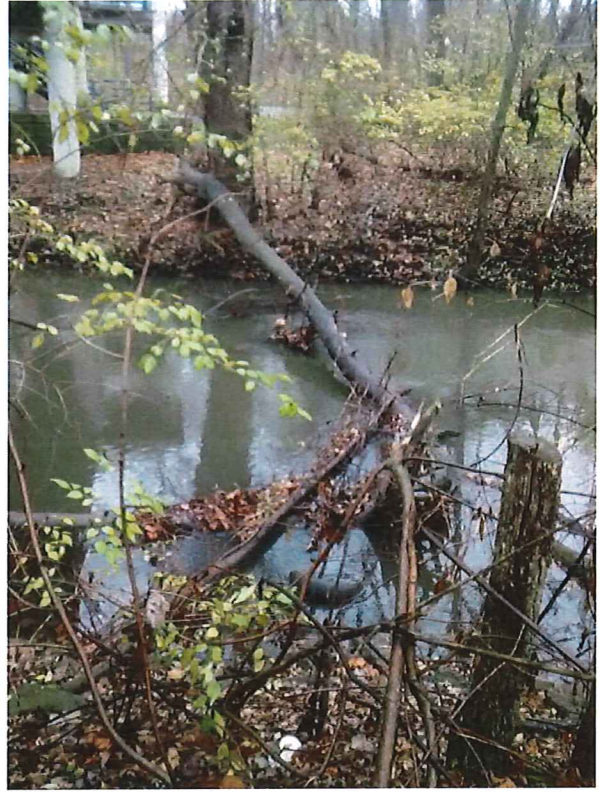
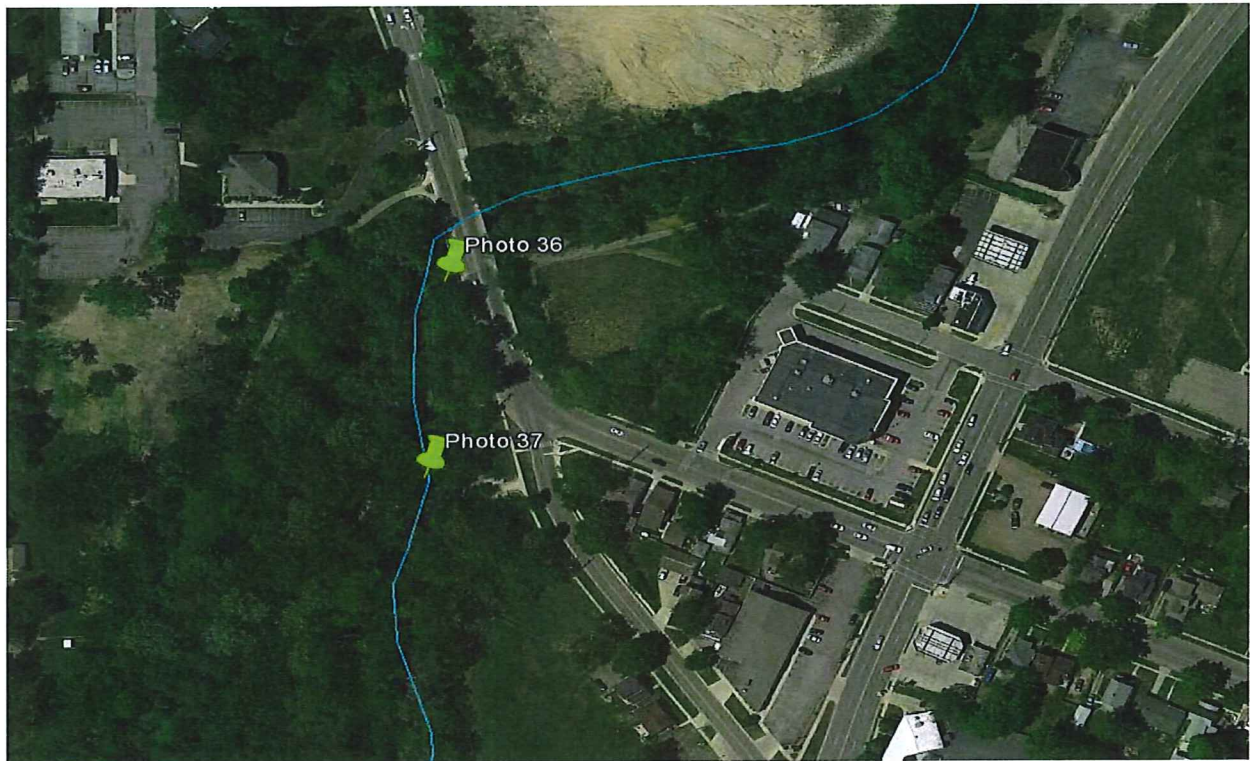


Photo 37 (Section 2 – east bank looking across river): Downed tree obstructing navigation through river



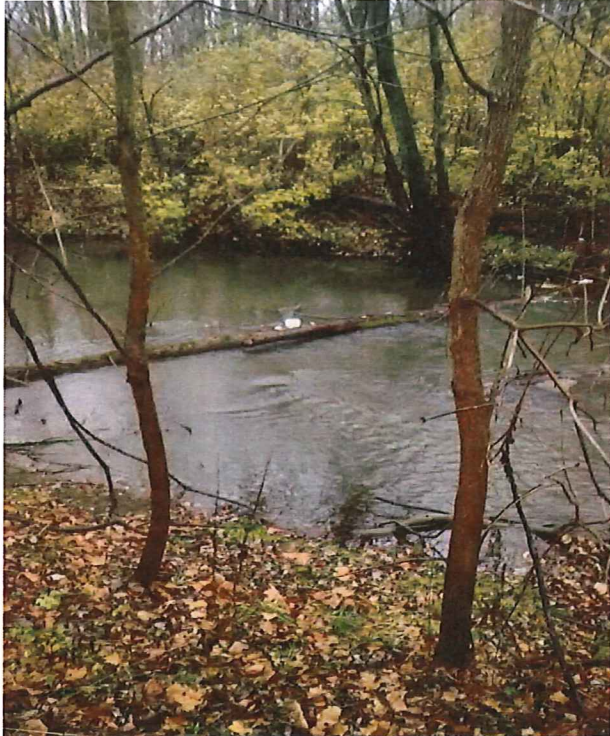


Photo 38 (Section 2 – east bank looking upstream):
Downed tree creating barrier across river



Photo 39 (Section 2 – river bend looking downstream):
Brush in water creating navigation obstacle



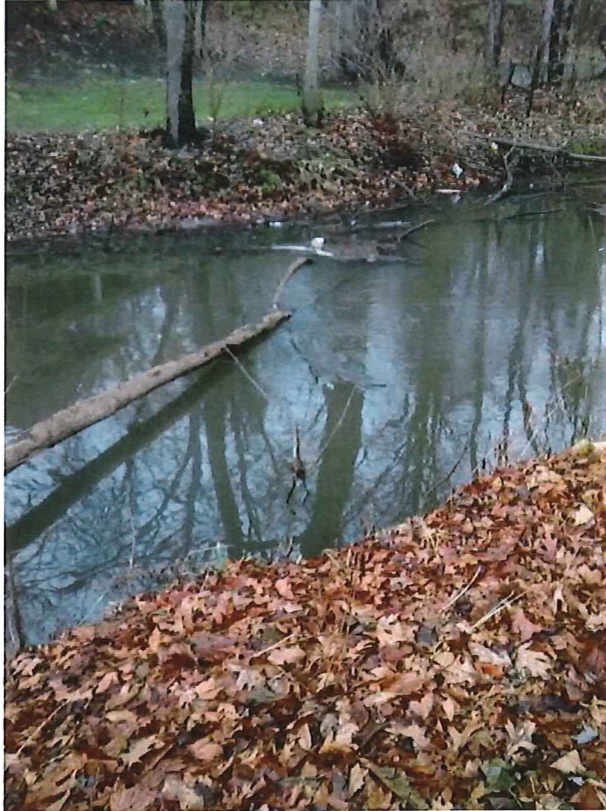


Photo 40 (Section 2 – south bank looking across river): Downed tree creating barrier across river

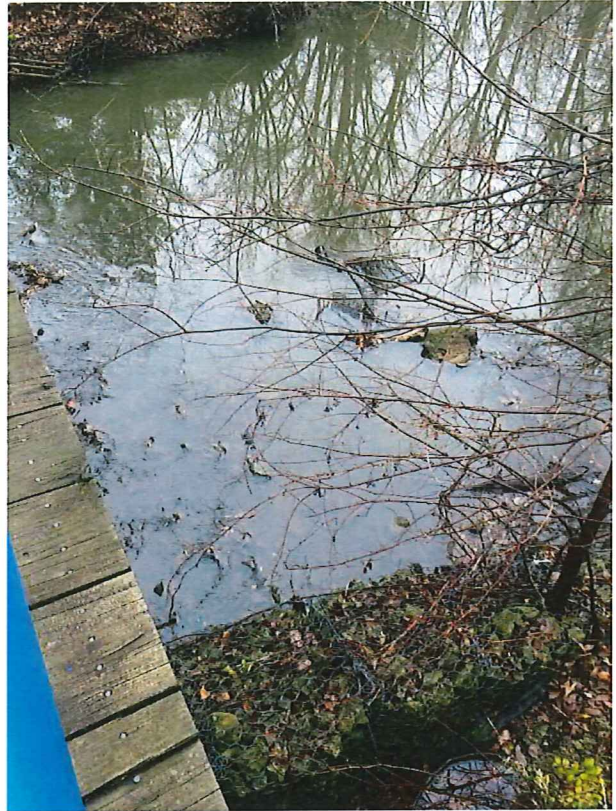


Photo 41 (Section 2 – Kiwanis bridge north bank looking upstream): Shopping cart in river

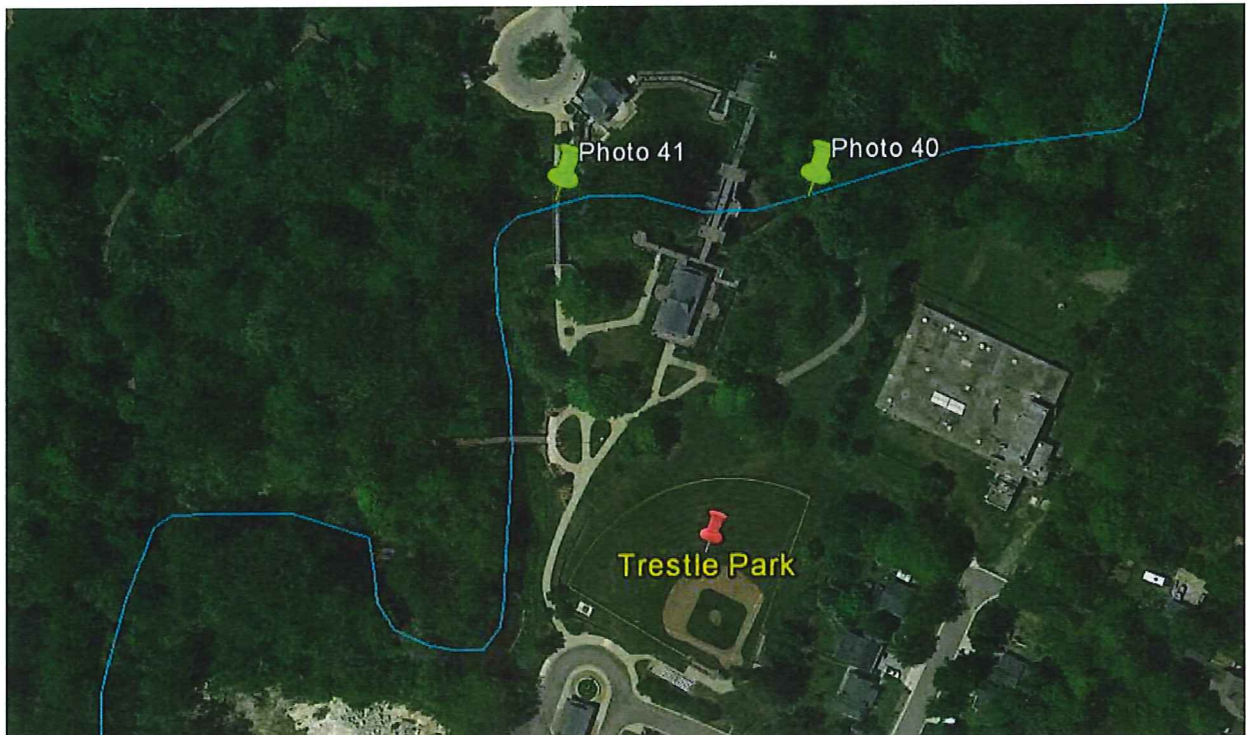




Photo 42 (Section 2 – north bank looking across river): Downed trees overhanging river

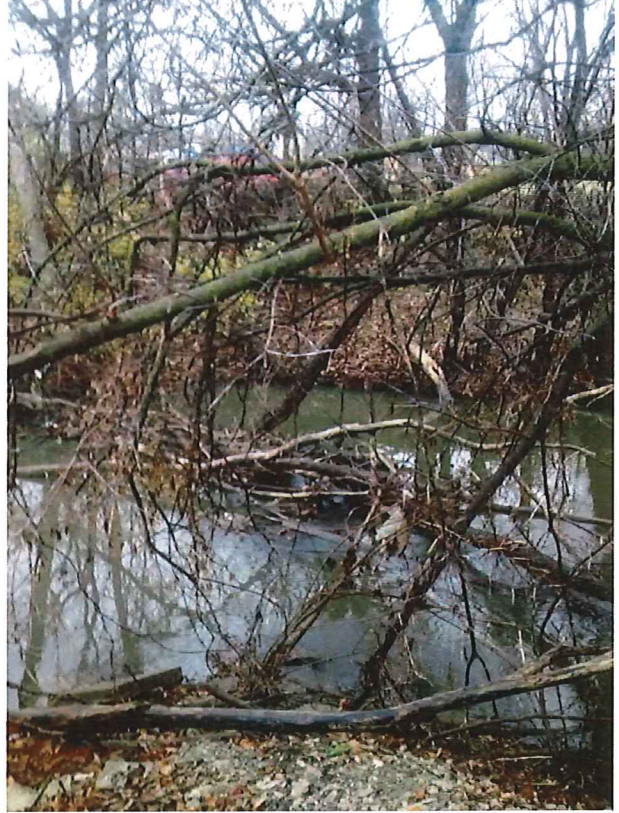
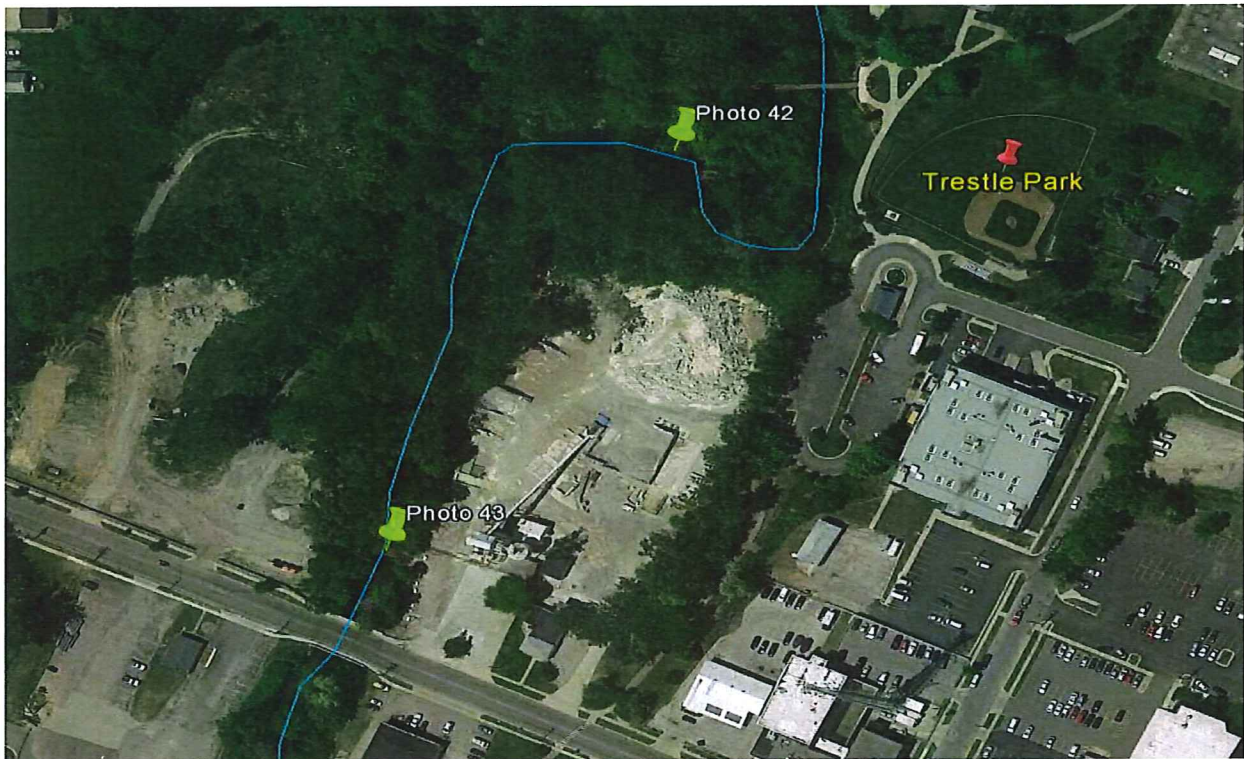
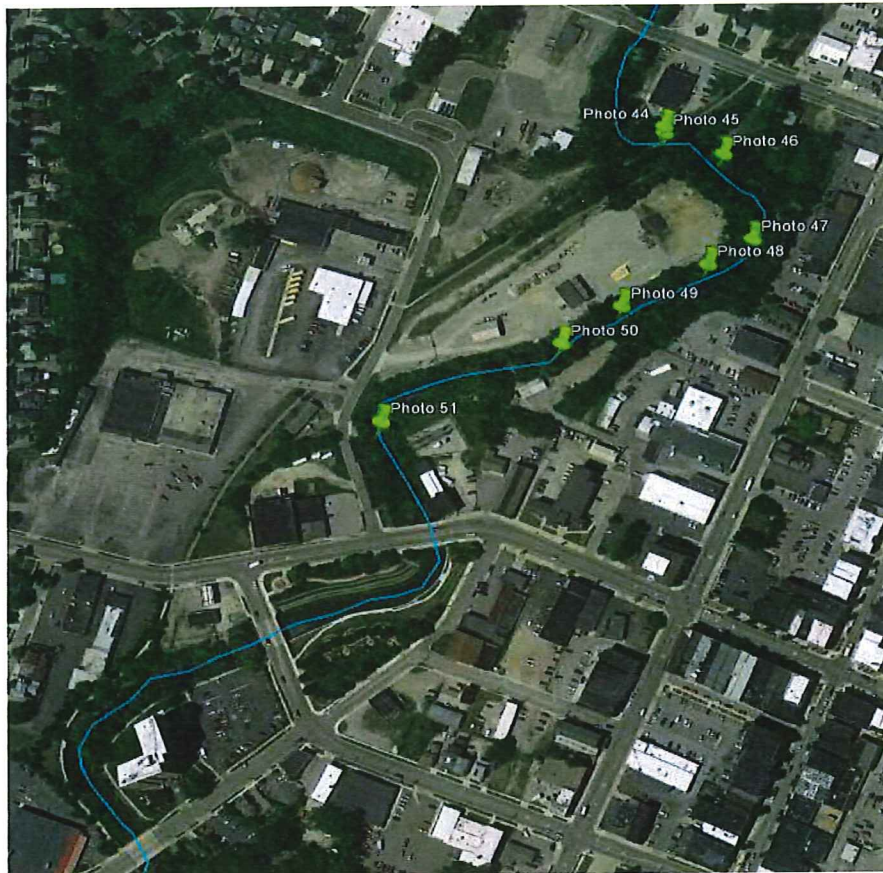


Photo 43 (Section 2 – looking across river): Trees creating barrier across river



Section 3: Trestle Park to College Avenue.



Locations of Obstacles to Be Removed in Section 3 (Marked with Green Pins)



Photo 44 (Section 3 – south bank looking across river): Brush in river inhibiting passage by kayak

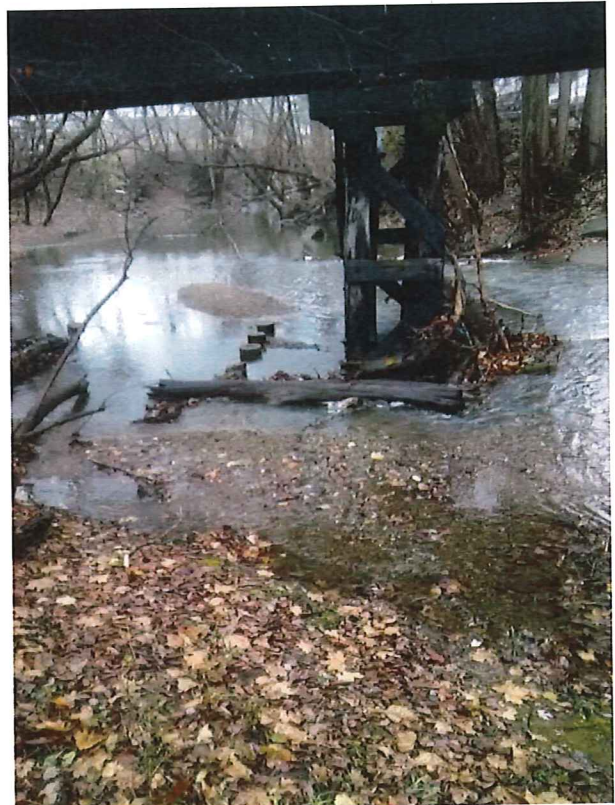
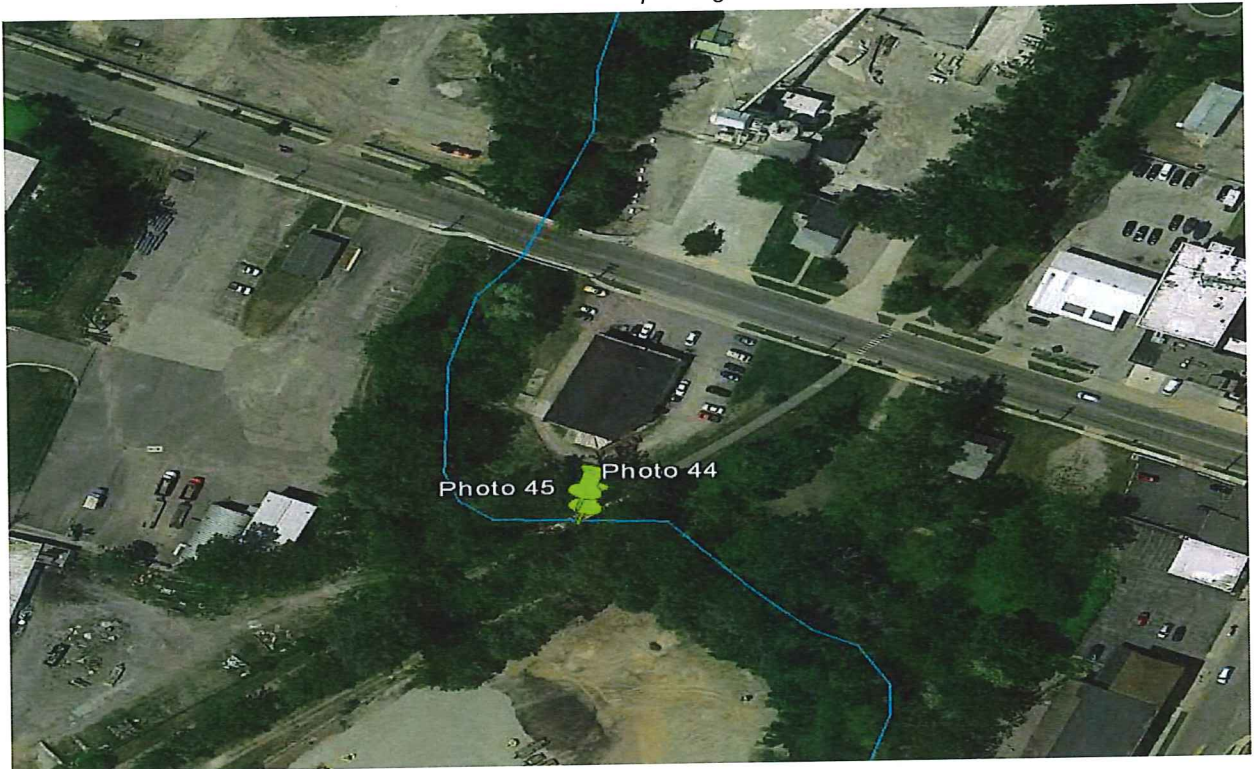


Photo 45 (Section 3 – west bank looking downstream): Debris under bridge inhibiting passage



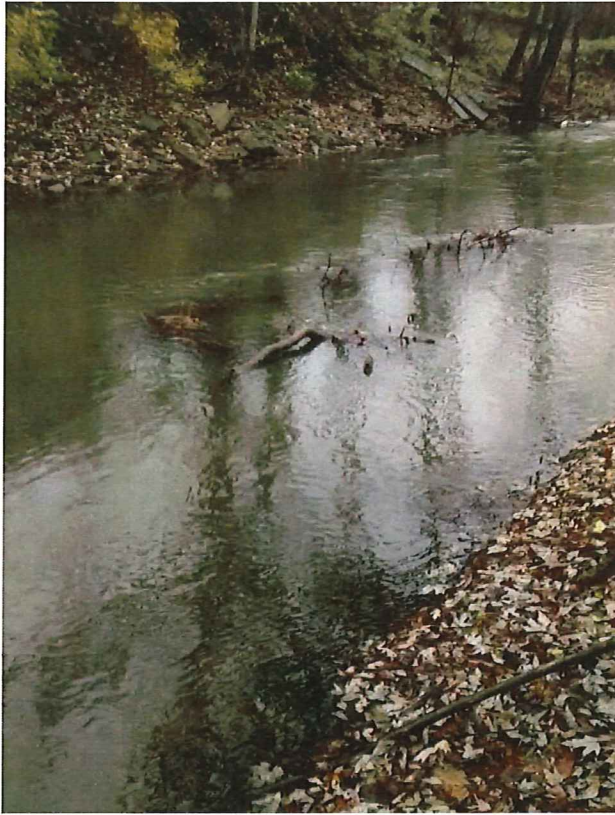


Photo 46 (Section 3 – south bank looking upstream):
Brush in water creating an obstacle

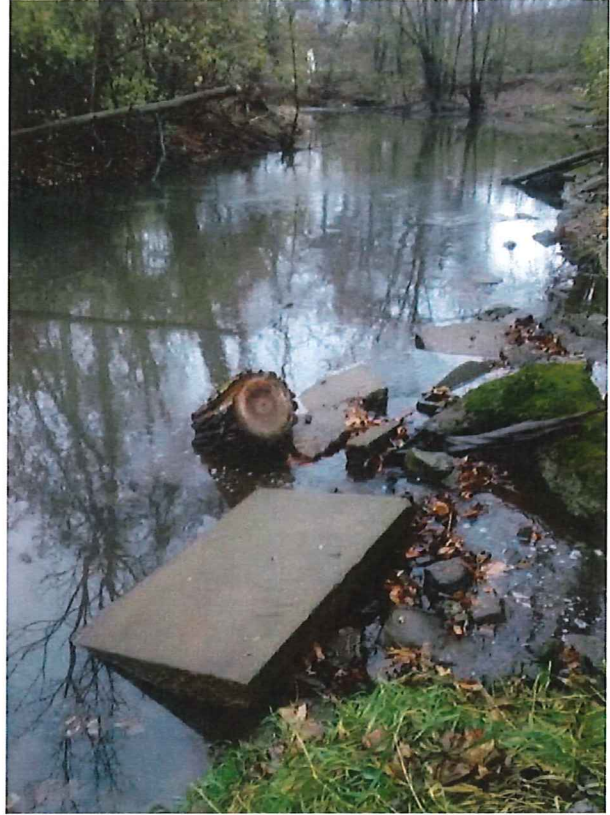
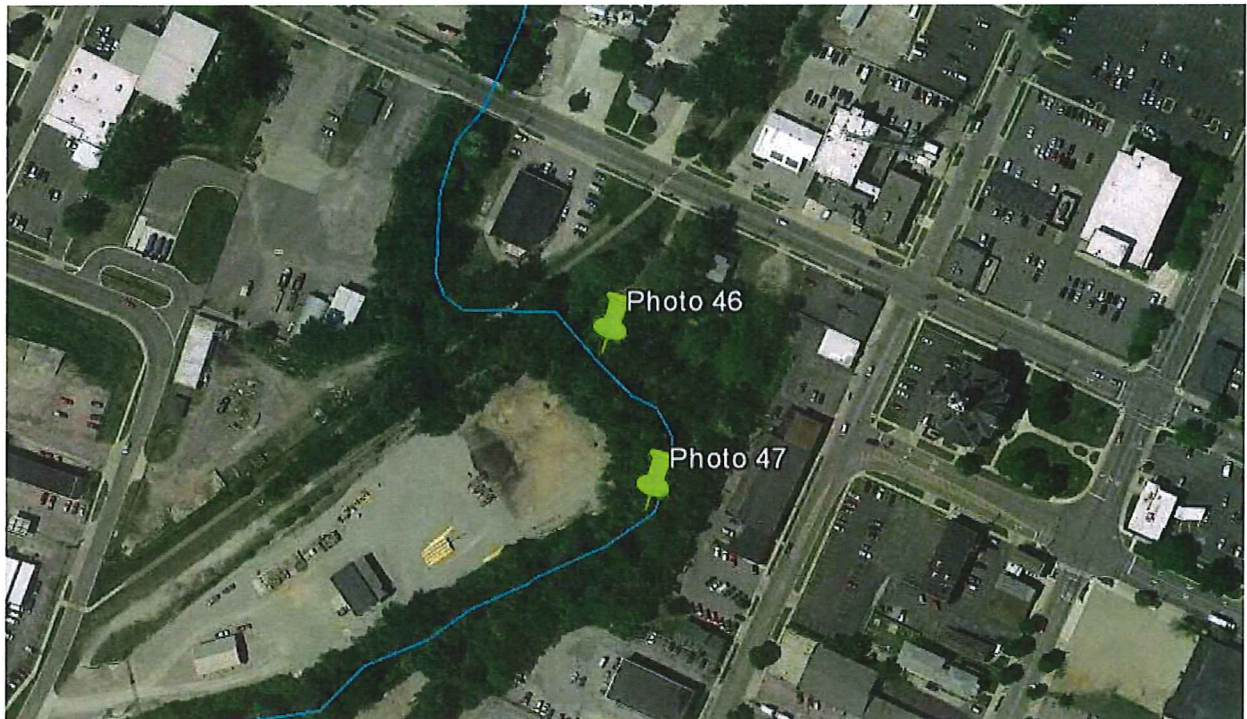


Photo 47 (Section 3 – east bank looking
downstream): Concrete debris on river bank



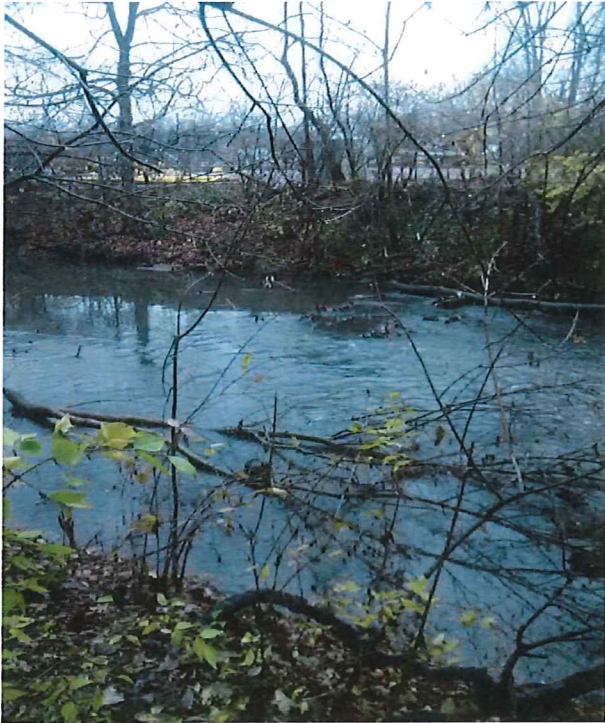


Photo 48 (Section 3 – east bank looking upstream): Trees and rocks creating obstructions through river area

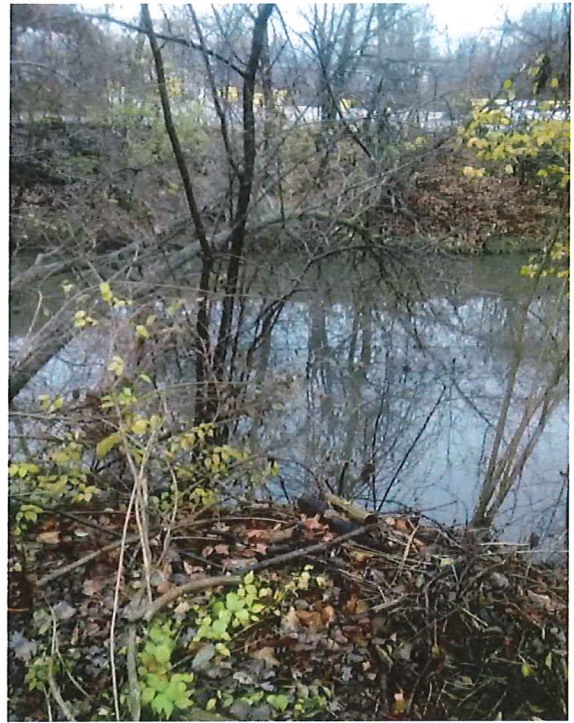
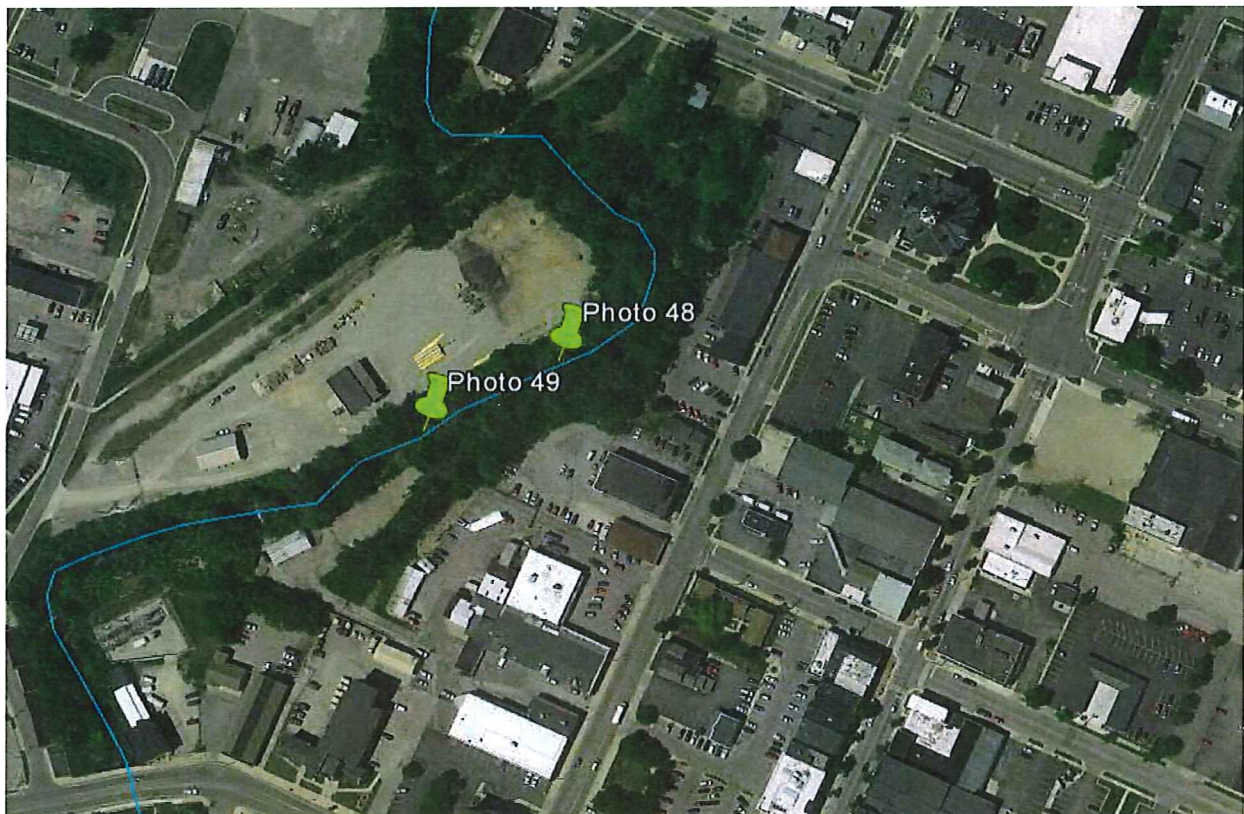


Photo 49 (Section 3 – east bank looking across river): Overhanging tree spanning the river and impeding possible navigation



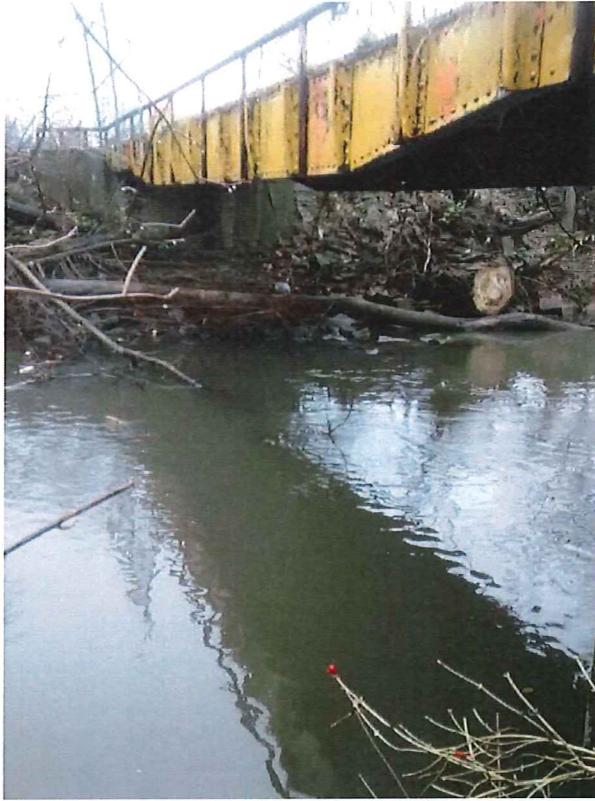
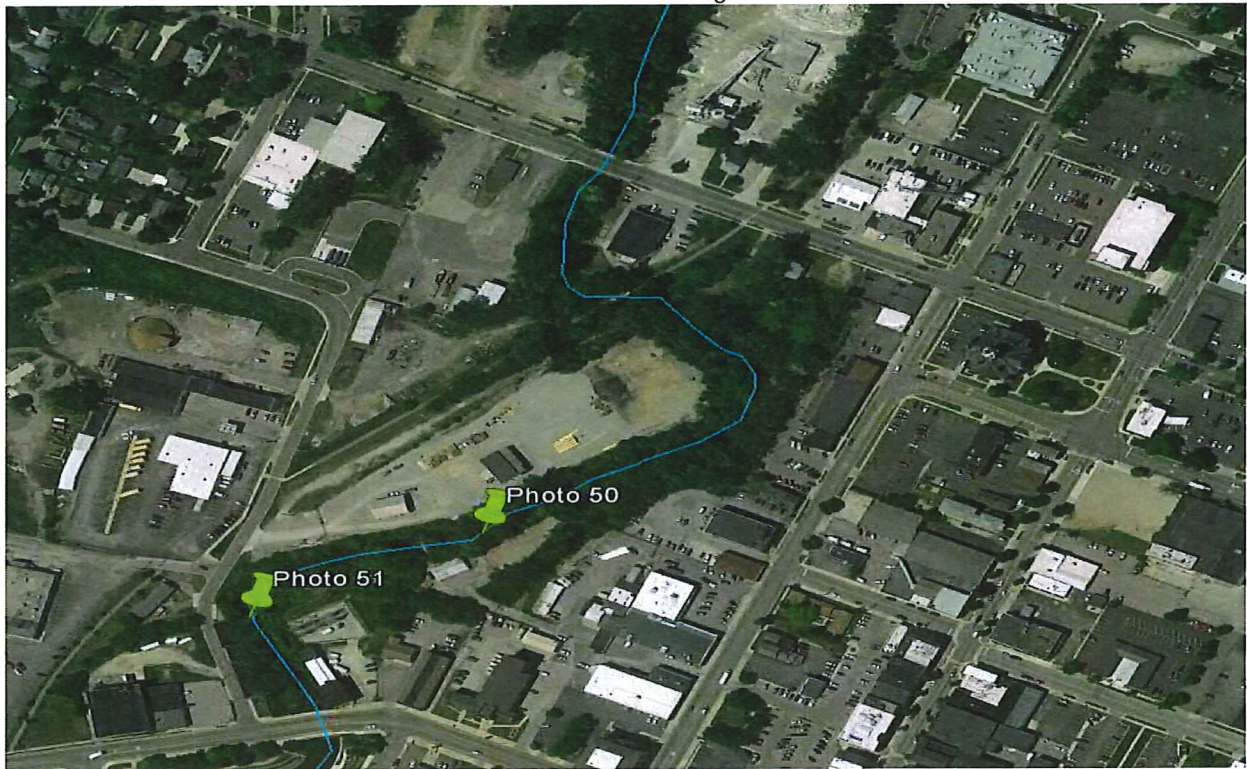


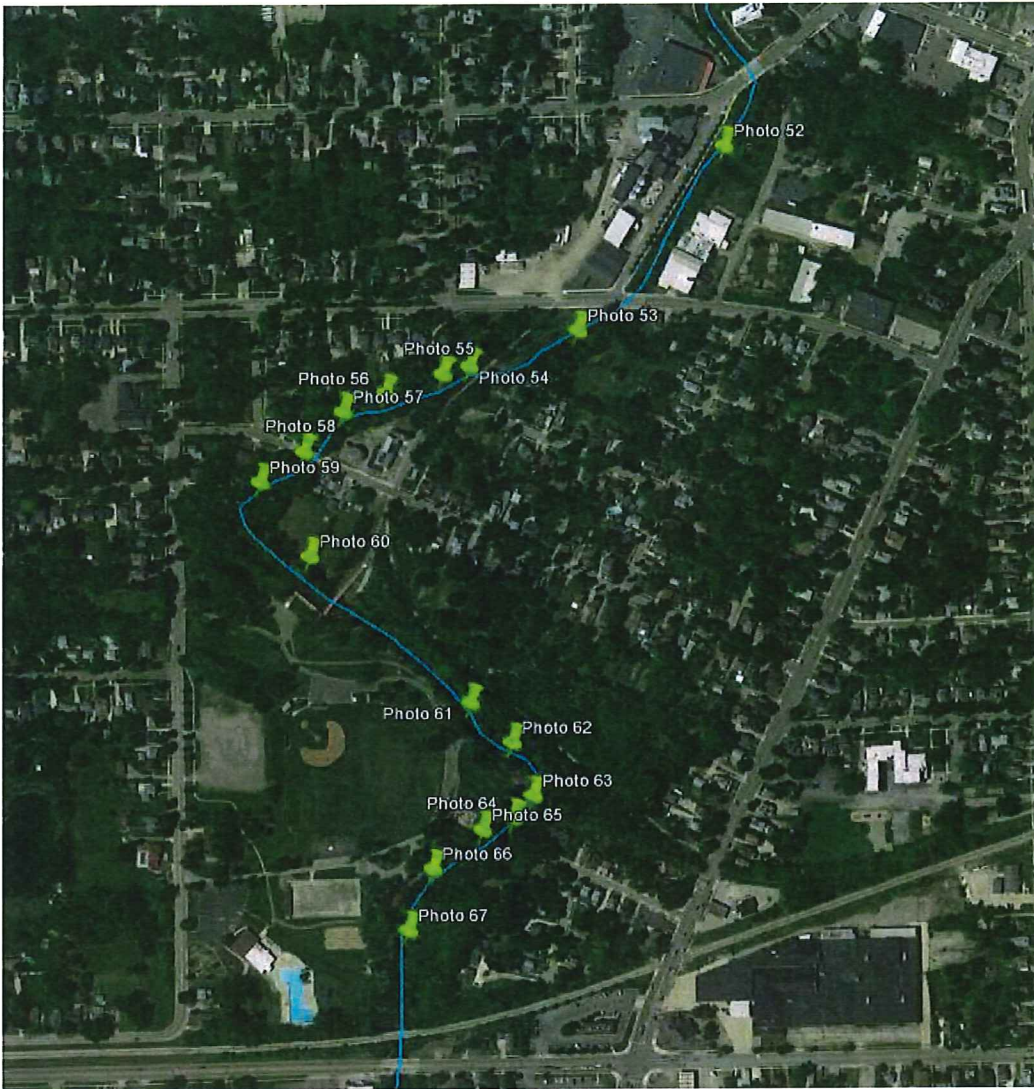
Photo 50 (Section 3 – east bank looking across river): Brush near bank of pipe bridge



Photo 51 (Section 3 – west bank looking upstream): Downed tree blocking passage through river



Section 4: College Avenue to Riverside Park



Locations of Obstacles to Be Removed in Section 4 (Marked with Green Pins)



Photo 52 (Section 4 – west bank looking across river): Tree overhanging river on the east bank



Photo 53 (Section 4 – west bank looking across river): Overhanging tree hanging over river near Michigan Avenue Bridge

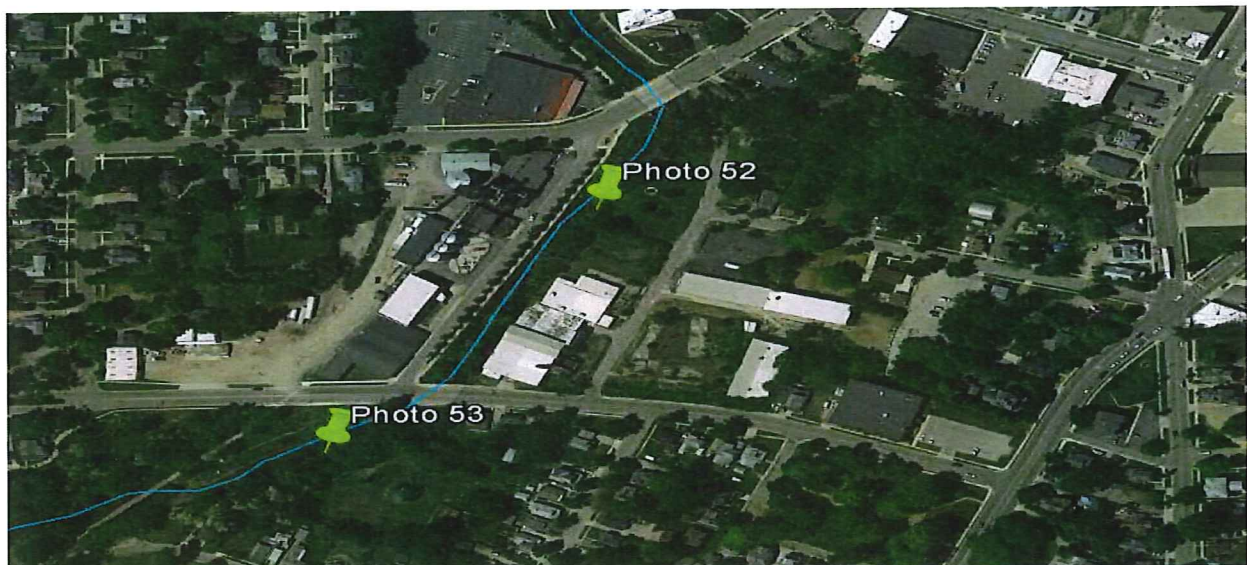




Photo 54 (Section 4 – north bank looking downstream): Piles of branches blocking passage by Kiwanis bridge)



Photo 55 (Section 4 – north bank looking across river): Downed tree blocking passage through river





Photo 56 (Section 4 – north bank looking downstream): Downed tree blocking passage through river

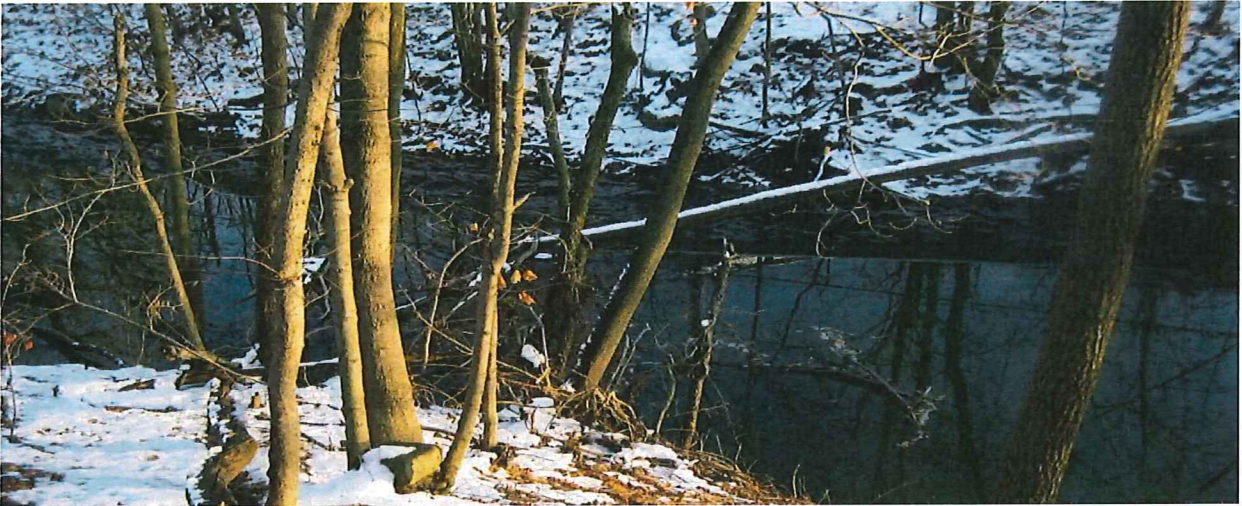


Photo 57 (Section 4 – north bank looking downstream): Downed tree blocking passage through river

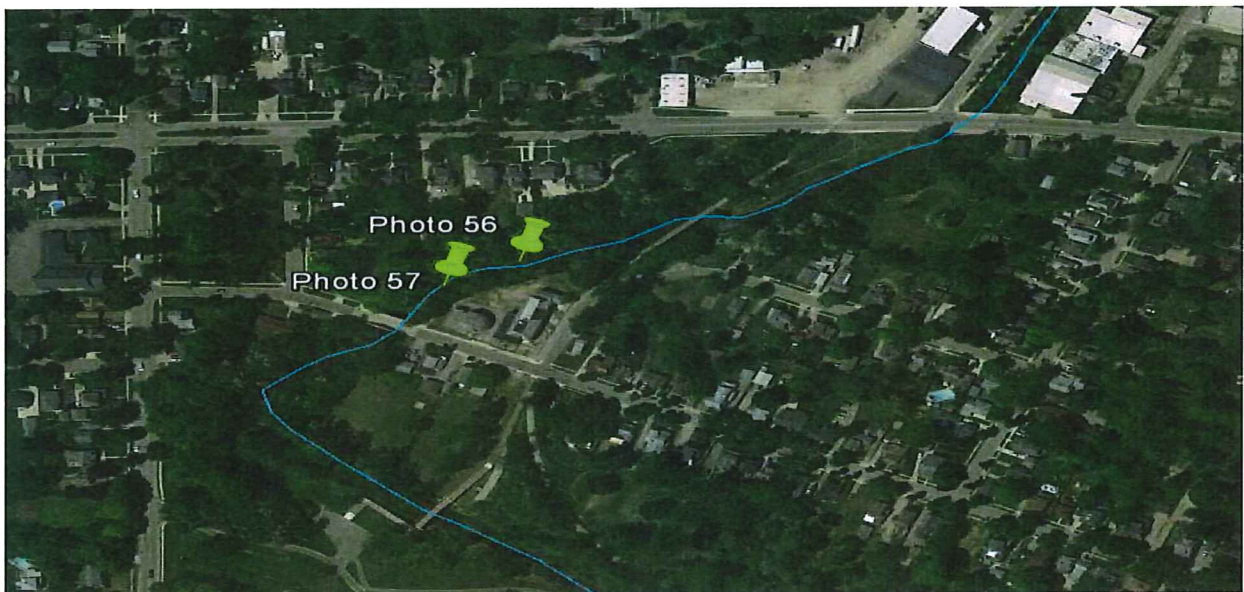




Photo 58 (Section 4 – north bank looking downstream): Downed tree blocking over half the passage through river near Merrick Street Bridge



Photo 59 (Section 4 – northwest bank looking downstream): Tree branch near bank of river

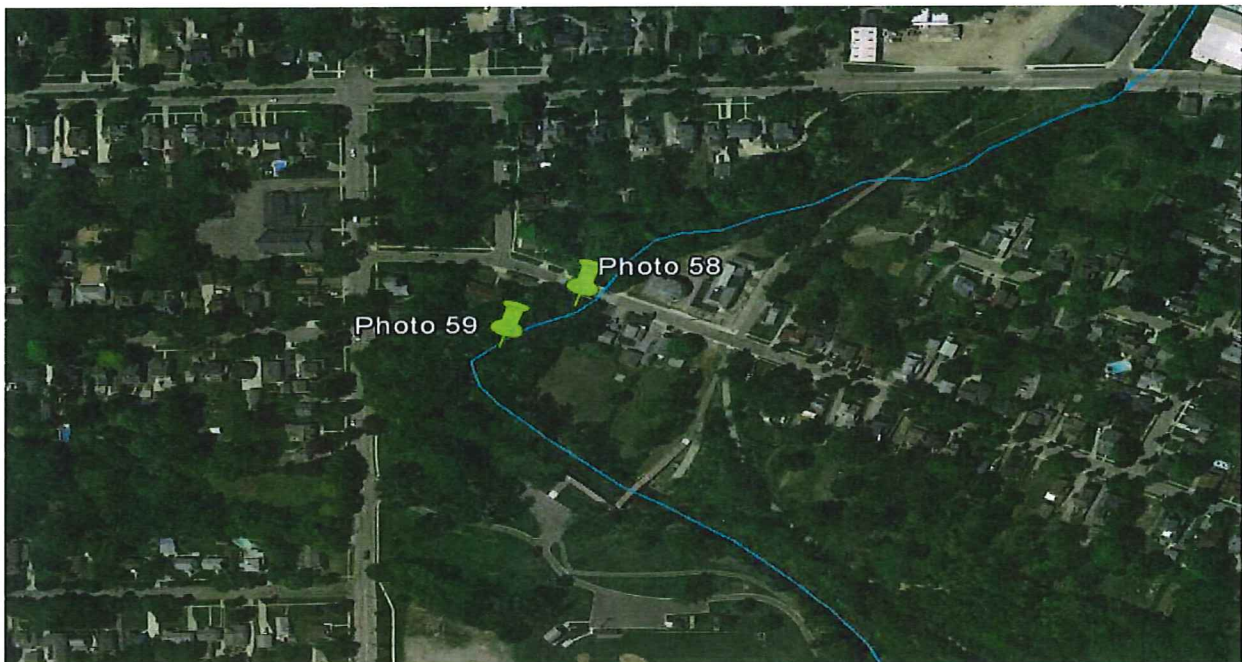




Photo 60 (Section 4 – west bank looking downstream): Tree floating over surface of water blocking passage through river



Photo 61 (Section 4 – west bank looking downstream): Tree overhanging river that could eventually fall into river

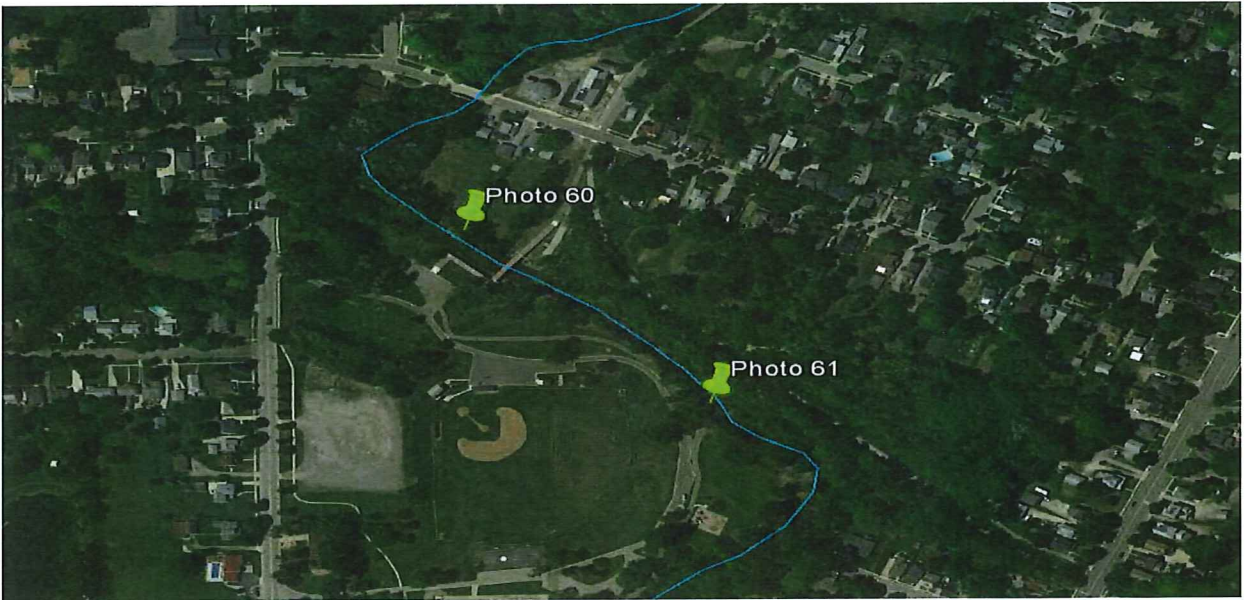




Photo 62 (Section 4 – west bank looking downstream): Downed tree (over 1-foot diameter) jEtting into river and a smaller tree floating nearby



Photo 63 (Section 4 – west bank looking across river): Pile of trees off the east bank of river blocking passage through most of river

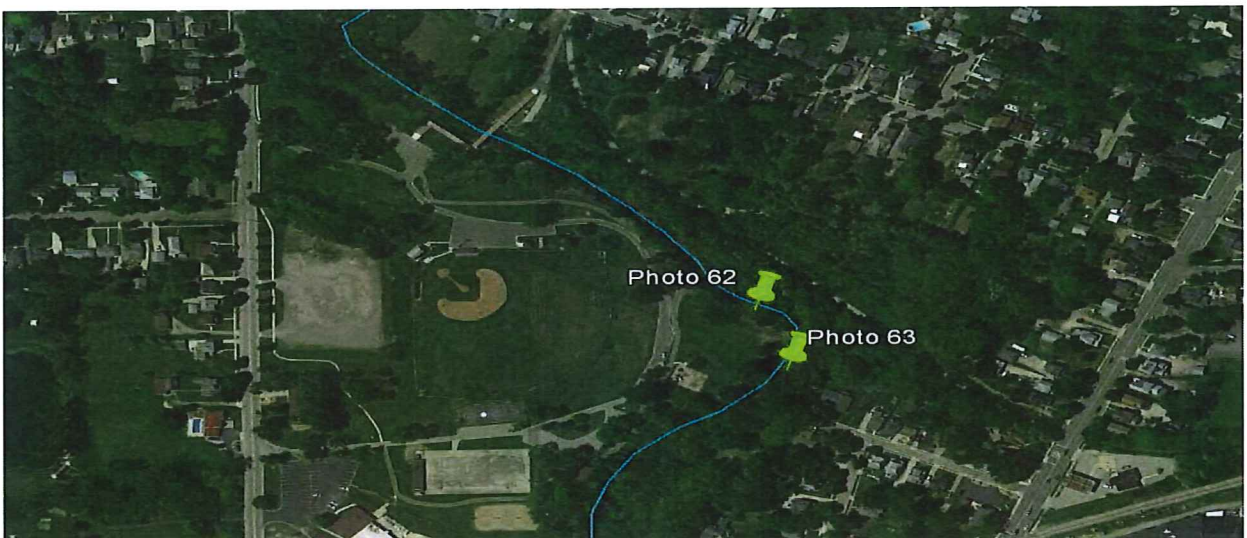




Photo 64 (Section 4 – west bank looking upstream): Tree in middle of river under overhanging pipe



Photo 65 (Section 4 – west bank looking downstream): Tree brush obstructing bank and middle of river

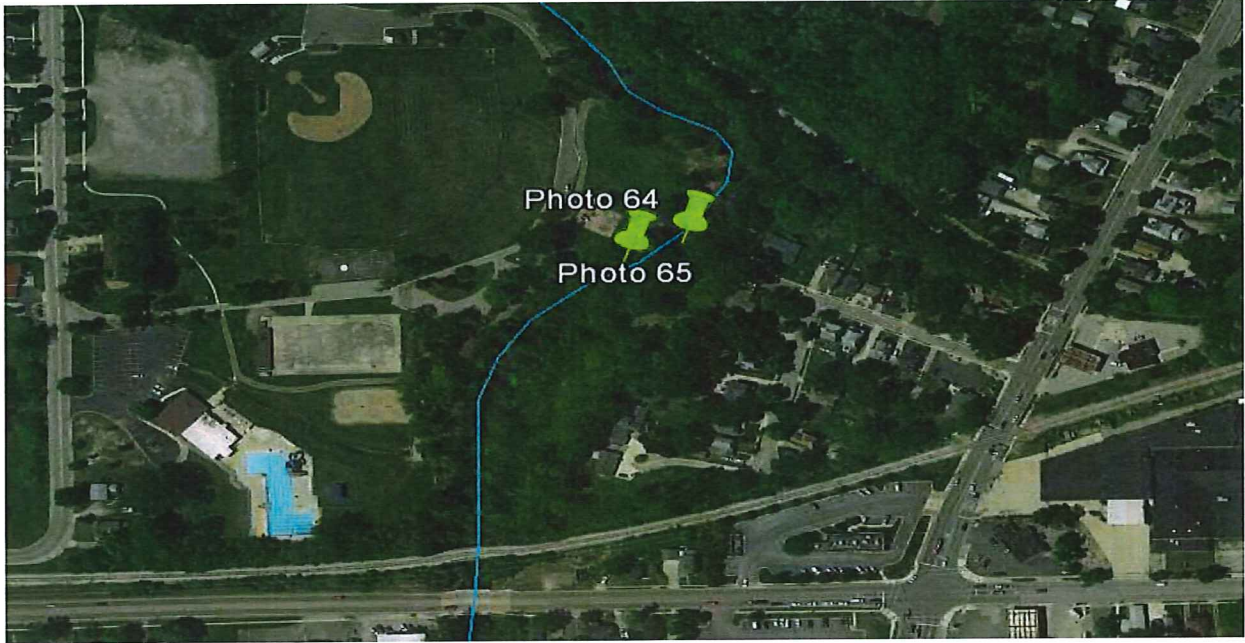
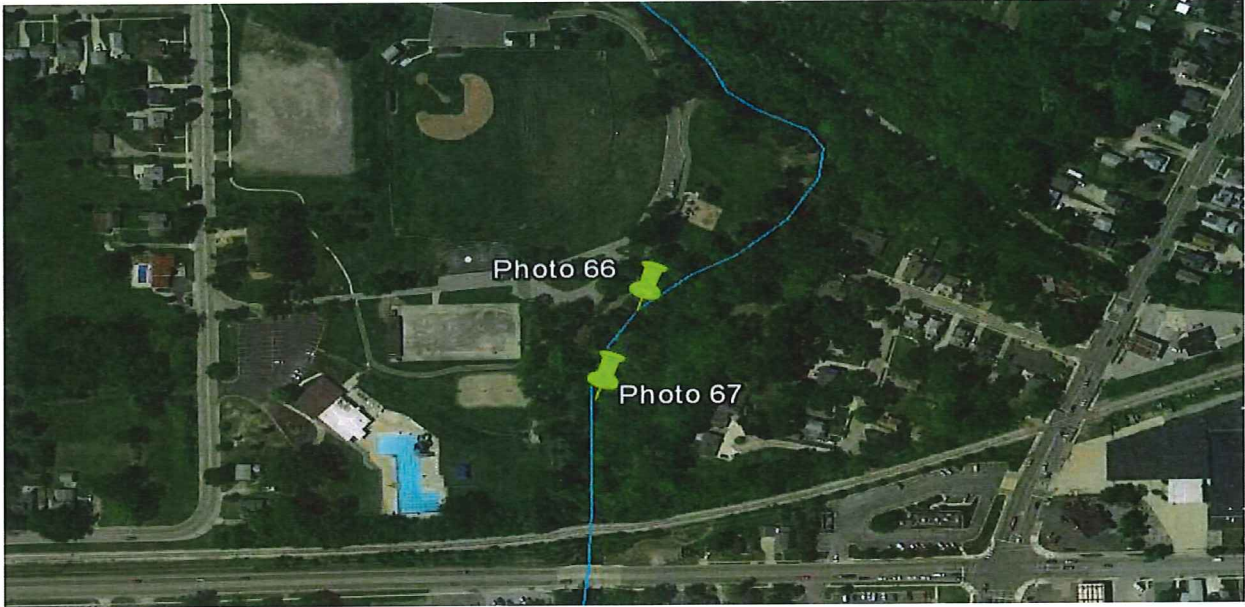




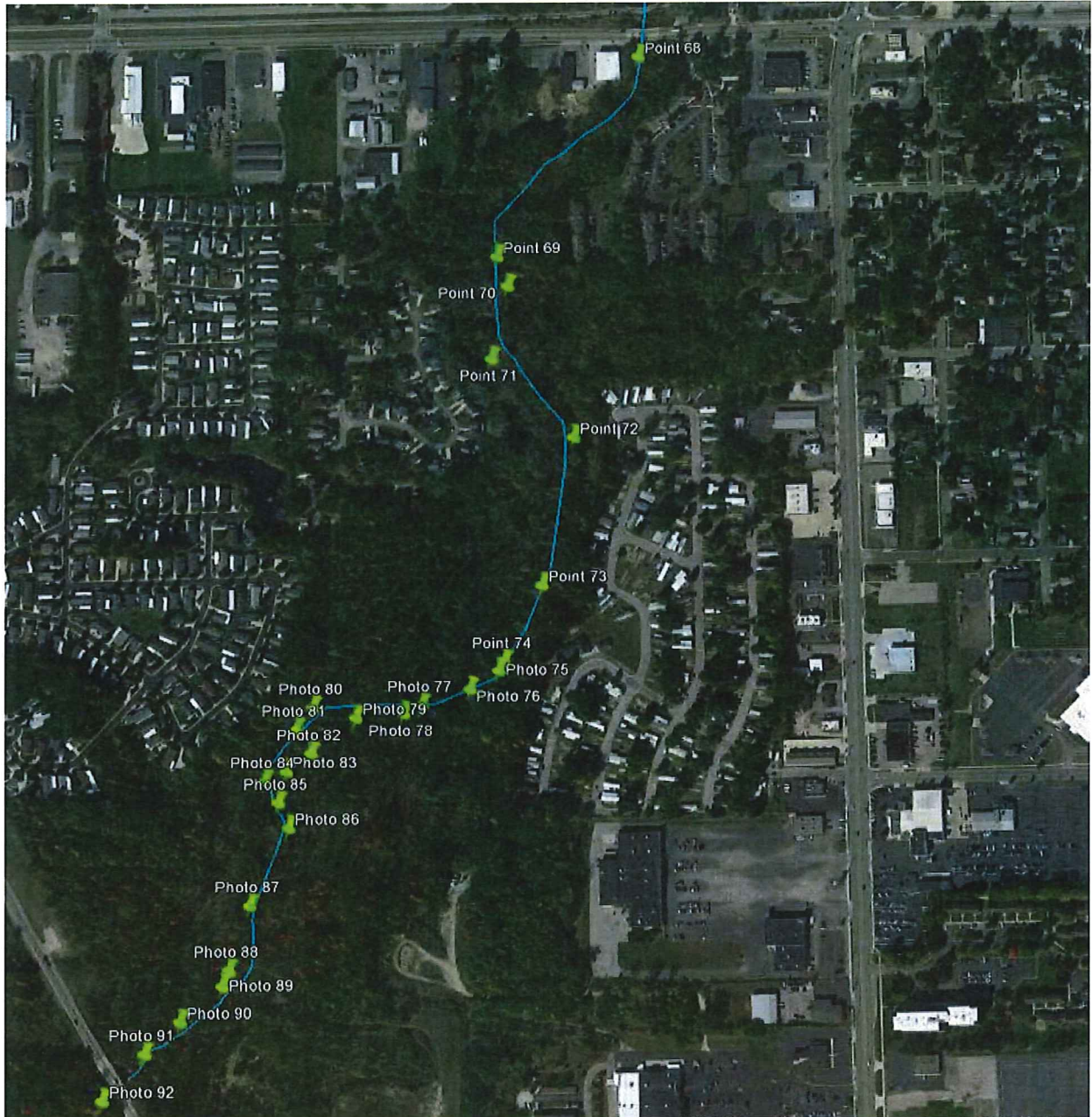
Photo 66 (Section 4 – west bank looking across river): Tree hanging over river obstructing navigation through river



Photo 67 (Section 4 – west bank looking upstream): Tree on west bank blocking navigation through half of river and tree on east bank hanging over river



Section 5: Riverside Park to Highway 223



Locations of Obstacles to Be Removed in Section 5 (Marked with Green Pins)



Photo 75 (Section 5 – east bank looking downstream): Large (2-foot diameter) tree resting over river

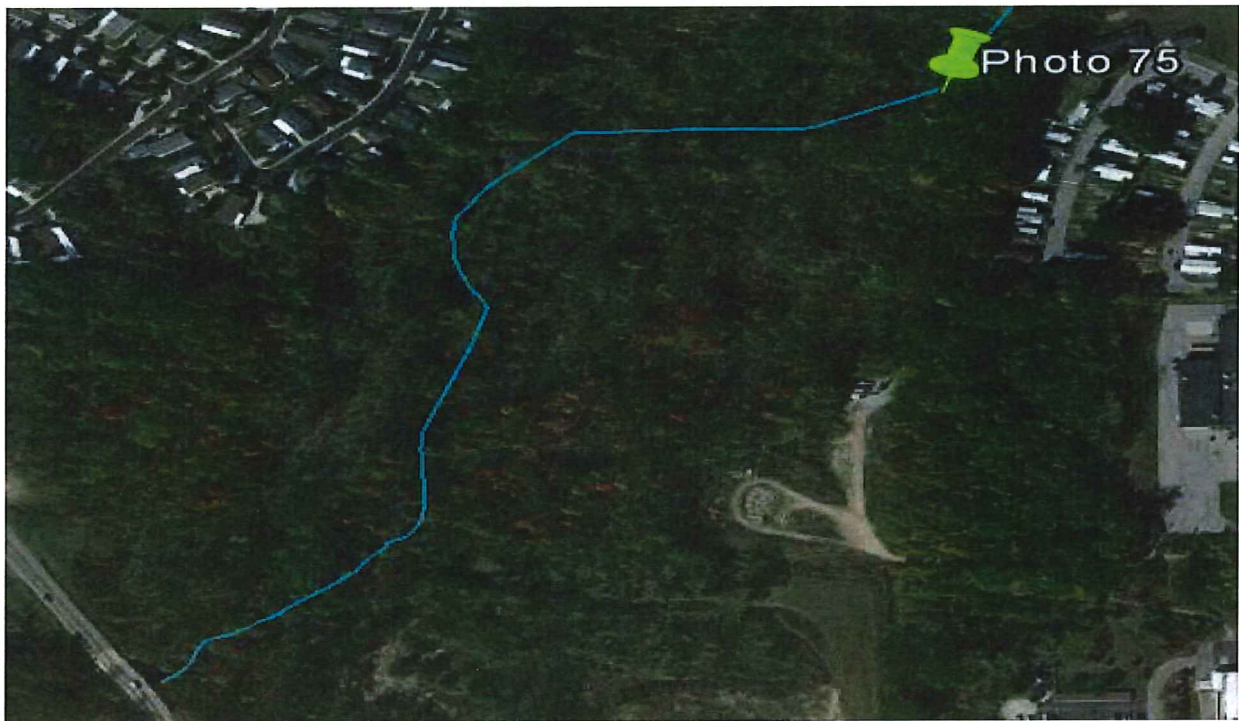




Photo 76 (Section 5 – south bank looking downstream): Trees blocking both banks of river with a small area in the middle for passage



Photo 77 (Section 5 – south bank looking across river): Trees and debris blocking river

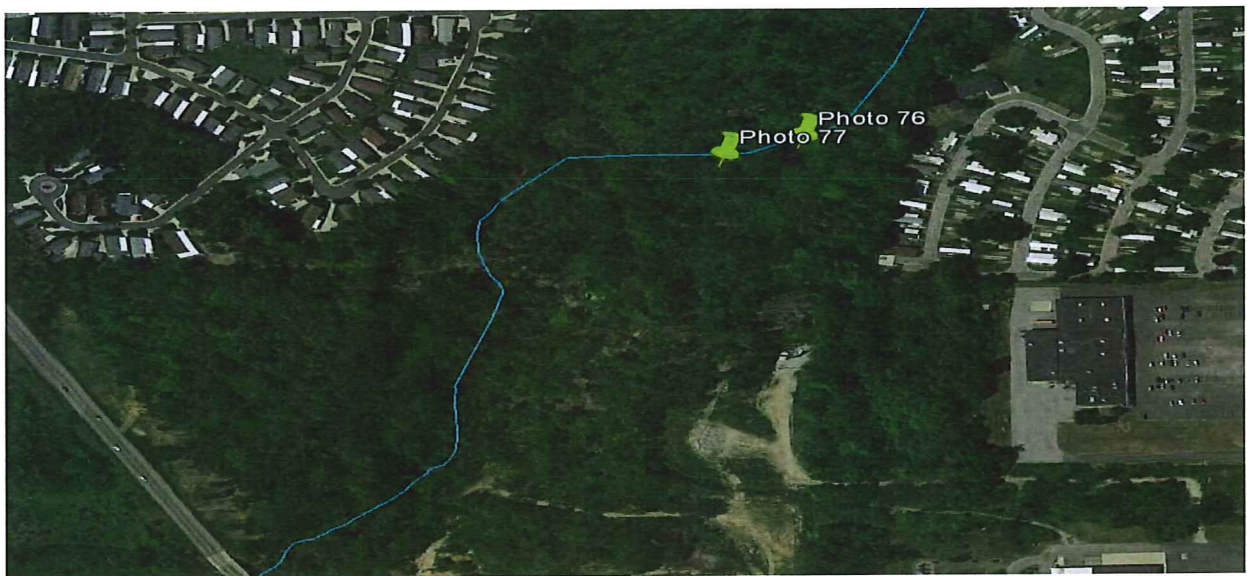




Photo 78 (Section 5 – south bank looking across river): Trees creating obstacles on both sides of river



Photo 79 (Section 5 – south bank looking downstream): Downed tree over river blocking passage through river

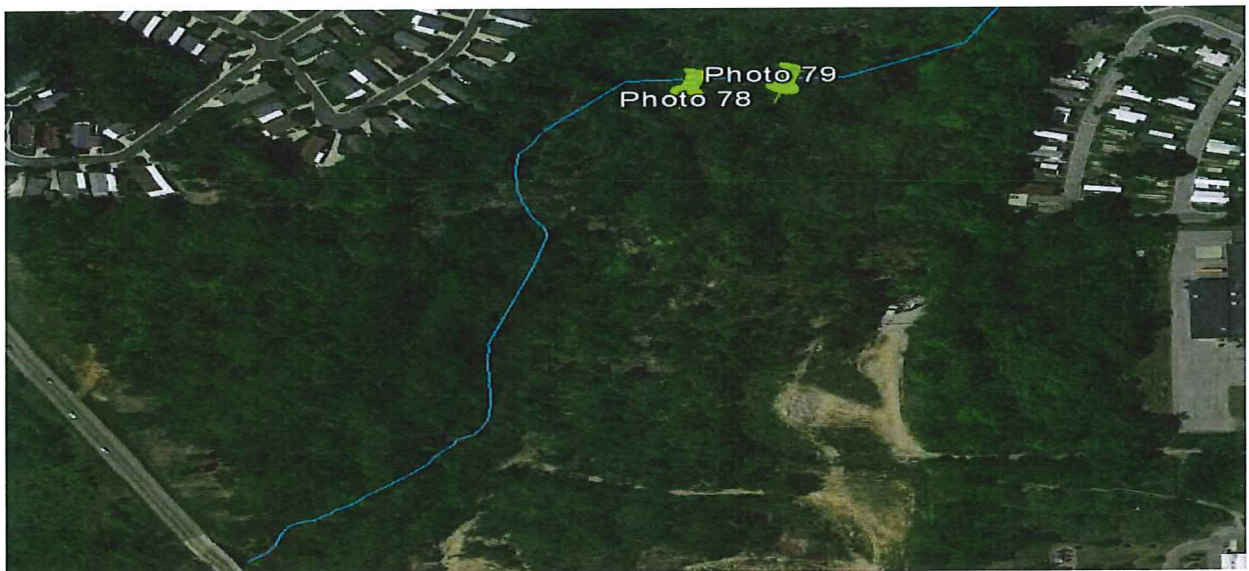




Photo 80 (Section 5 – south bank looking across river at bend): Tree on bank of river creating a partial obstruction to navigation



Photo 81 (Section 5 – east bank looking downstream): Pile of tree branches blocking passage

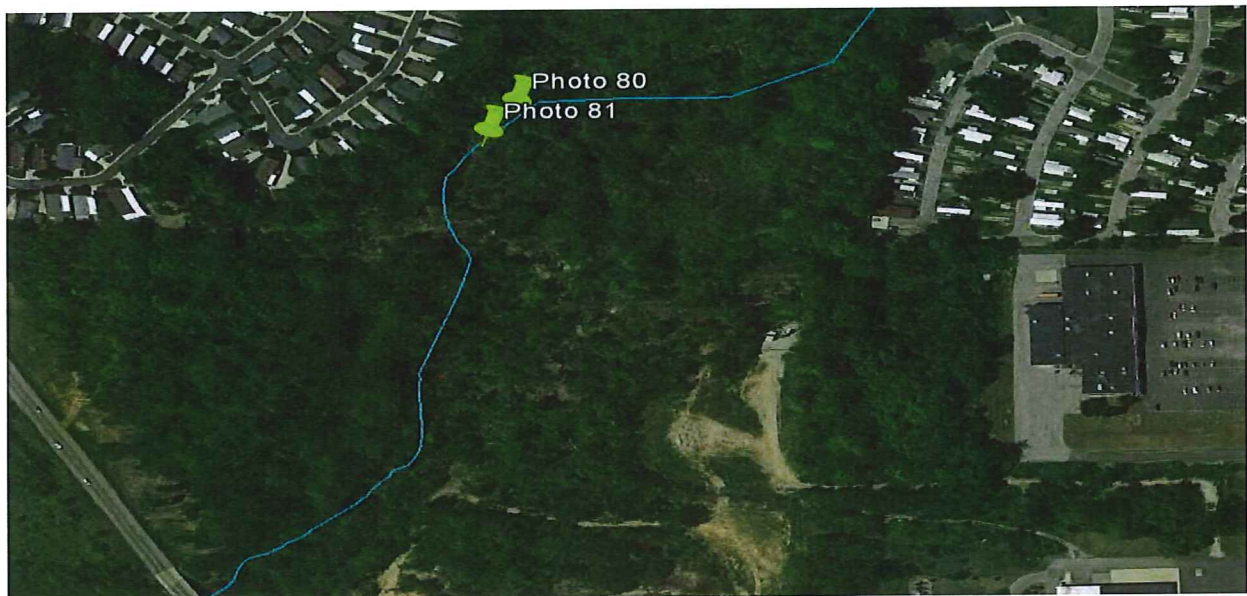




Photo 82 (Section 5 – east bank looking downstream): Several trees blocking navigation through river



Photo 83 (Section 5 – east bank looking downstream): Several branches impeding navigation through river

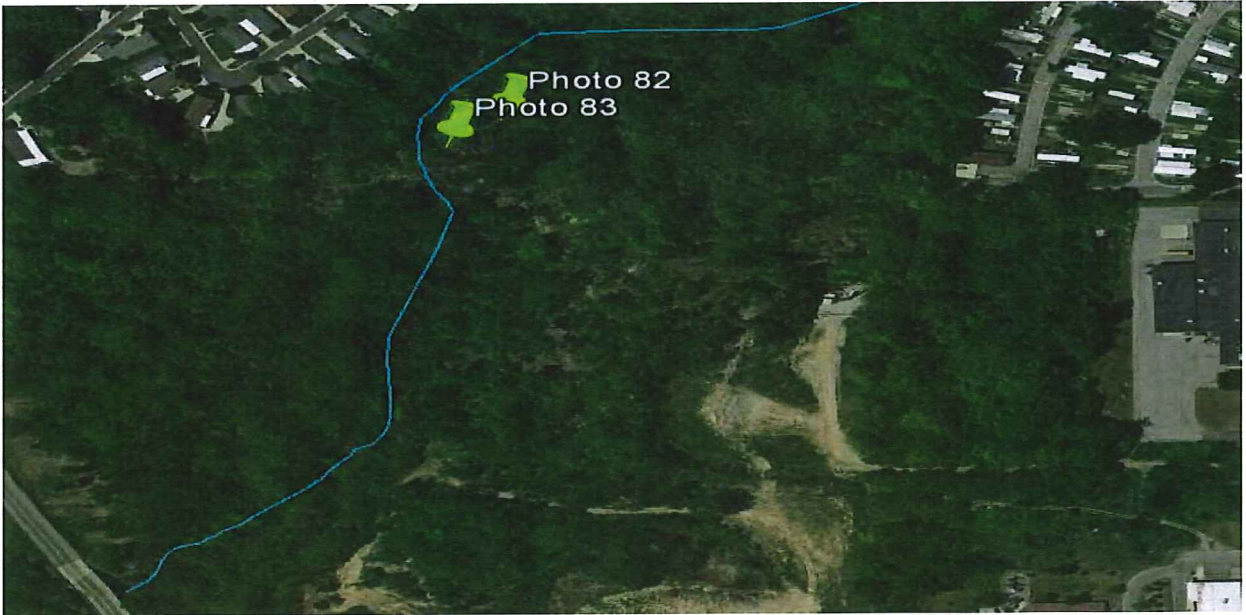




Photo 84 (Section 5 – east bank looking upstream): Groups of trees blocking navigation through bend in river



Photo 85 (Section 5 – east bank looking downstream): Several trees impeding river navigation

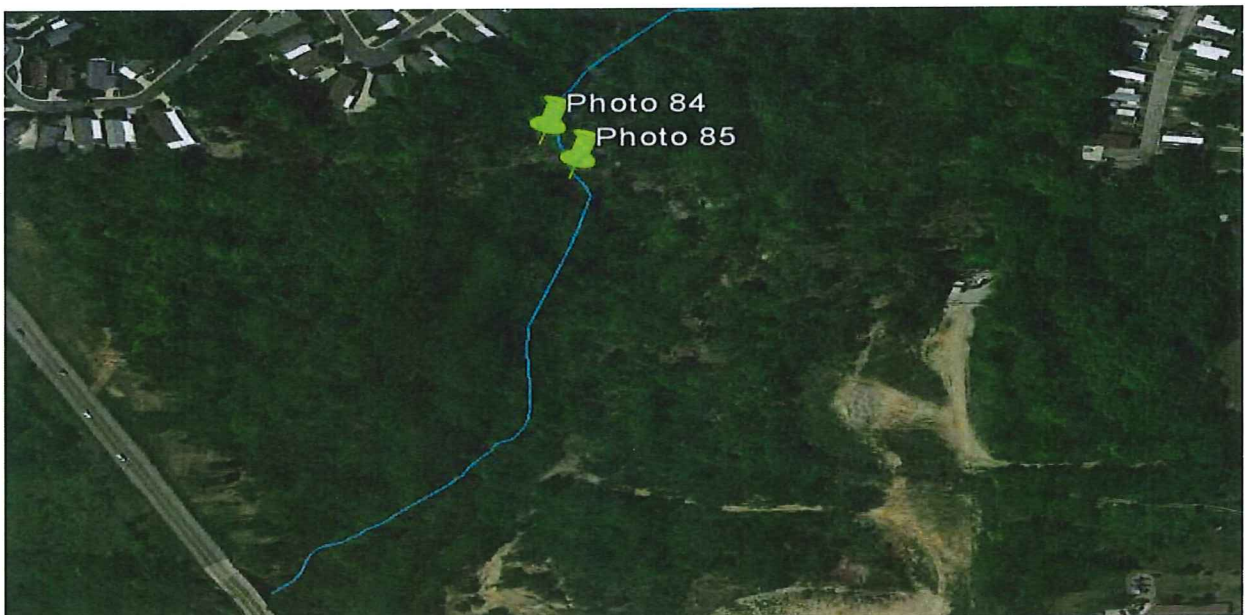




Photo 86 (Section 5 – east bank looking downstream): Tree on west bank overhanging river and tree floating near west bank of river



Photo 87 (Section 5 – east bank looking downstream): Tree brush on east bank entering river

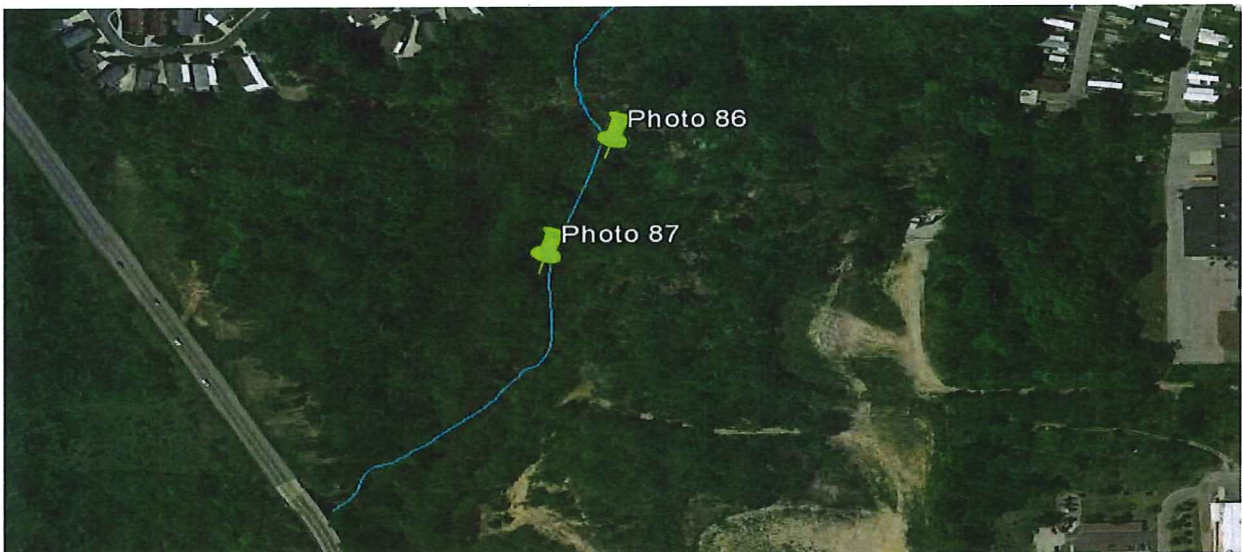




Photo 88 (Section 5 – east bank looking downstream): Tree crossing over river blocking river navigation



Photo 89 (Section 5 – east bank looking downstream): Downed tree blocking river navigation

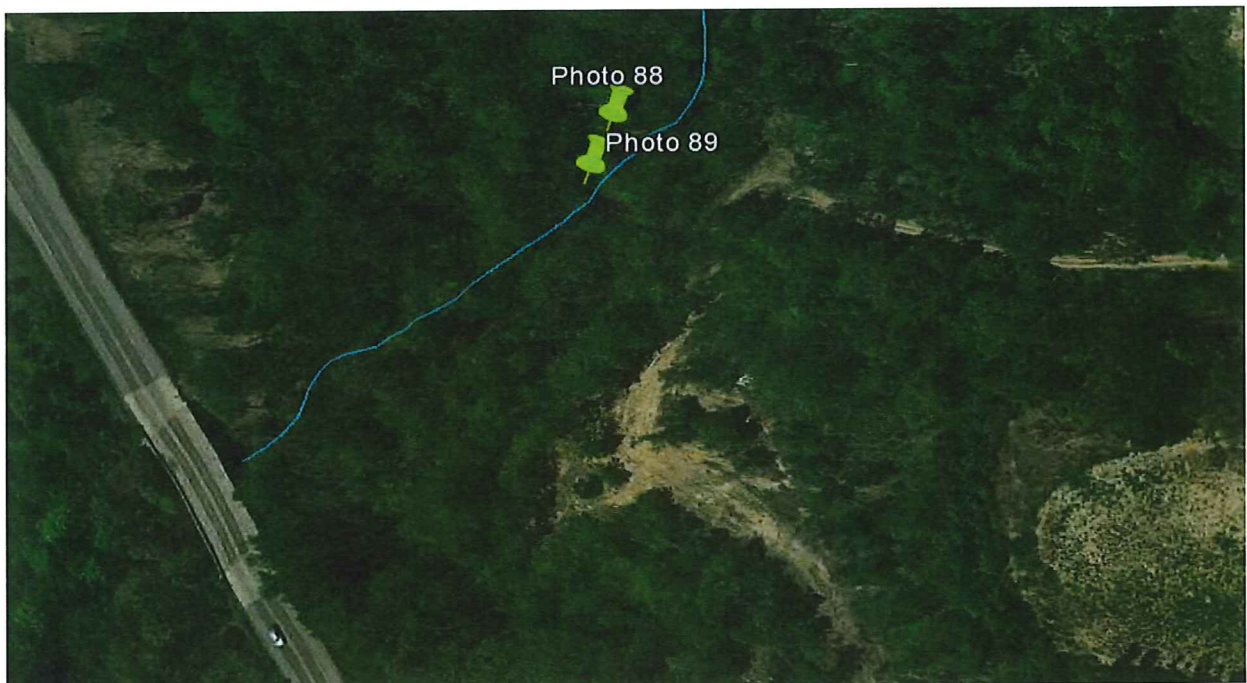




Photo 90 (Section 5 – southeast bank looking downstream): Several trees completely blocking navigation through river



Photo 91 (Section 5 – southeast bank looking downstream): Tree crossing over river blocking navigation through river

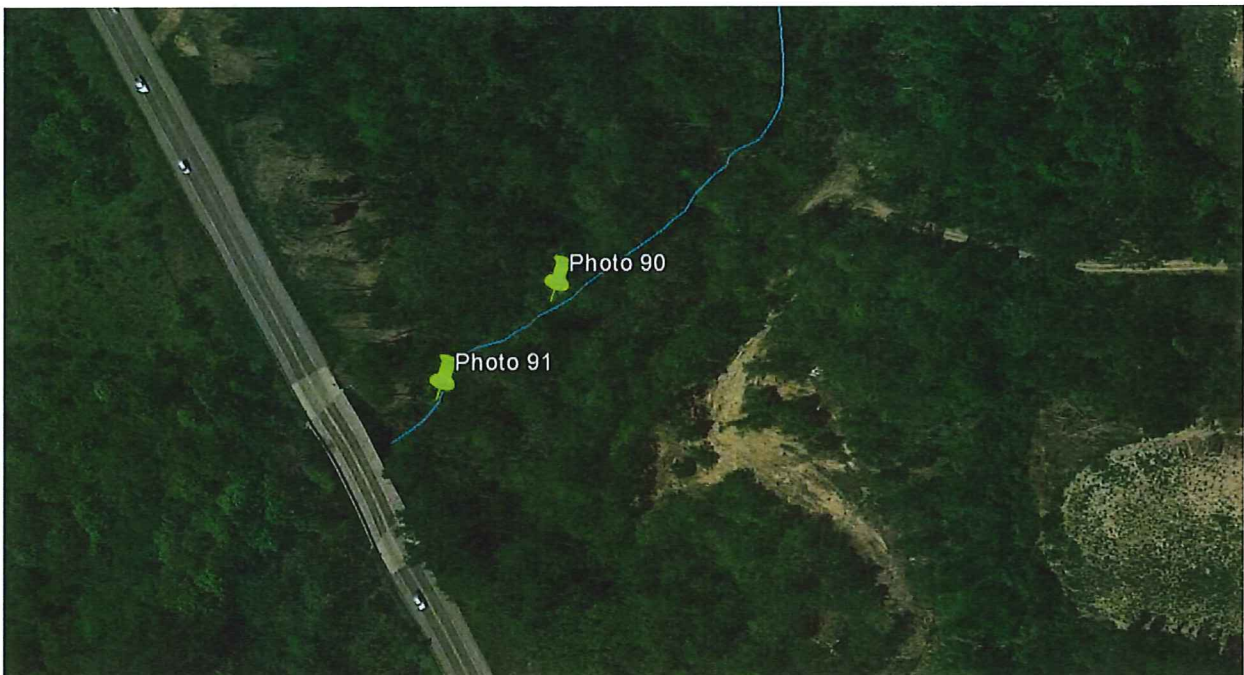




Photo 92 (Section 5 – southeast bank looking upstream): Tree blocking navigation through river past Highway 223 Bridge

