

RESEARCH REVEALS THE HEAVIEST ELEMENT EVER DISCOVERED (from Dennis Zimmerman)

The new element, Governmentium (Gv) is made up of one neutron, 25 assistant neutrons, 88 deputy neutrons and 198 assistant deputy neutrons, giving it an atomic mass of 312.

The 312 particles are held together by forces called morons, which are surrounded by vast quantities of peons. Since Governmentium has no electrons, it is inert but it can be detected because it slows down everything it comes in contact with. A tiny amount of Governmentium can cause a reaction normally taking less than a second to take up to four years to complete.

Governmentium has a half life of 2 to 6 years. It does not decay. It undergoes a reorganization where a portion of the assistant neutrons and deputy neutrons exchange places. In fact, sometimes reorganization will cause morons to become neutrons, forming isodopes, not to mention multiple oxymorons.

When catalyzed by money, Governmentium becomes Adminstratium (Am), another newly discovered element that uses just as much energy as Governmentium because although it has half as many peons, it has twice as many morons.



ILLITERATE?

WRITE FOR FREE HELP.

ILLITERACY FOUNDATION
806 MAIN STREET

LATYAR

www.StrangeCosmos.com

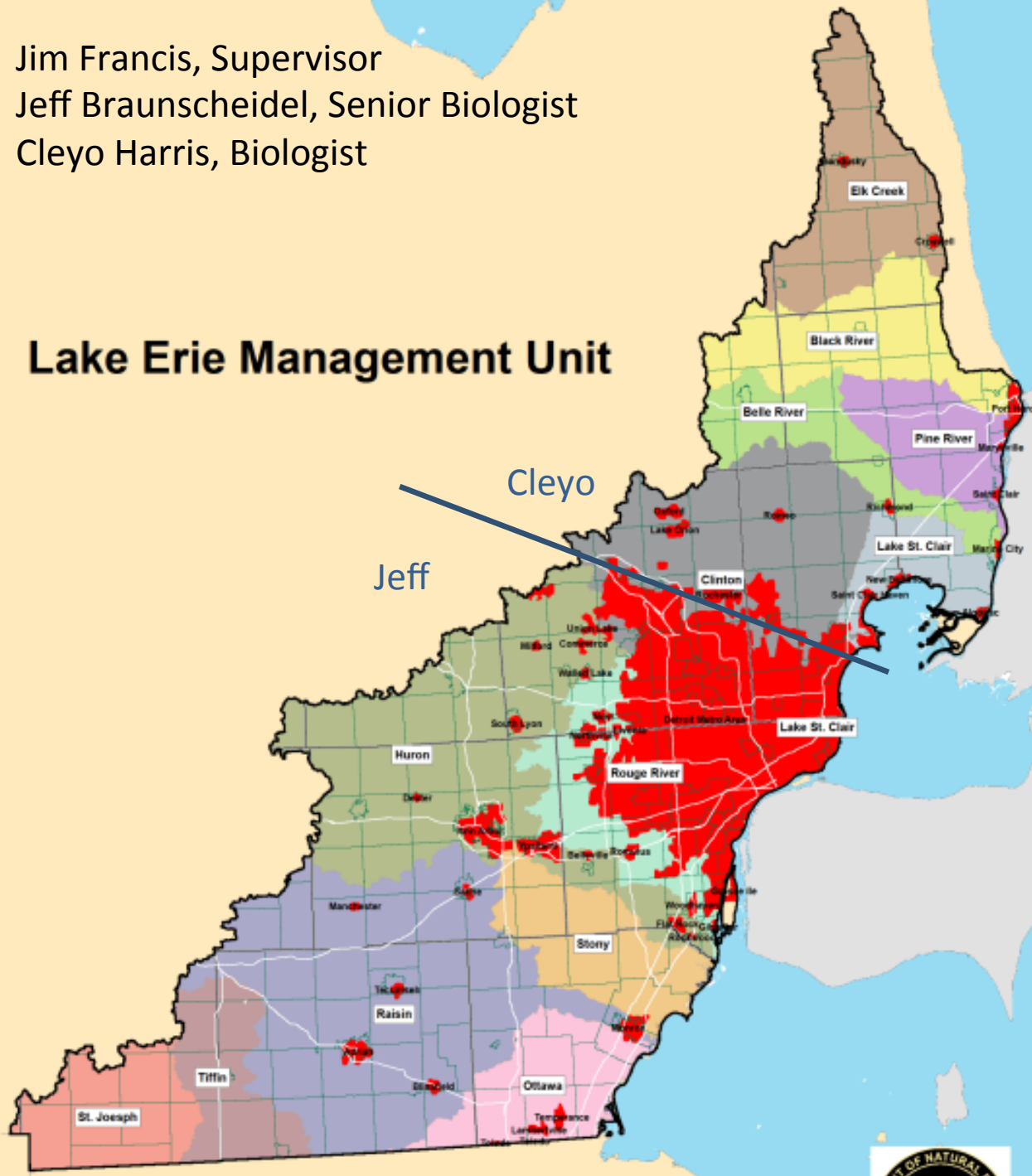
River Raisin Fisheries

Jeff Braunscheidel
Senior Fisheries Biologist
Lake Erie Management Unit
Fisheries Division



Jim Francis, Supervisor
Jeff Braunscheidel, Senior Biologist
Cleyo Harris, Biologist

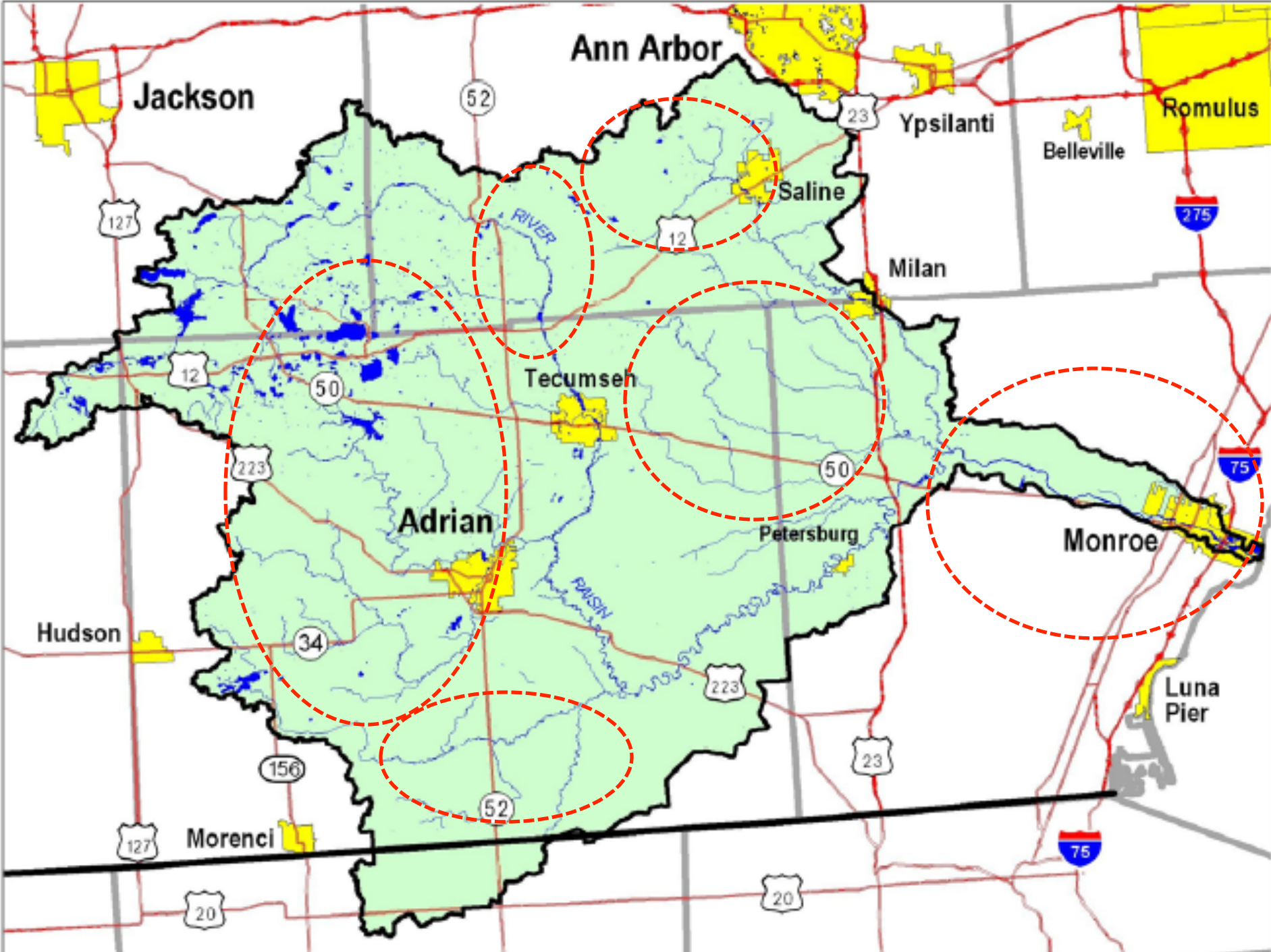
Lake Erie Management Unit



Outline

- Watershed
- Stream Fish Species
- Lake Fisheries
- Fish Passage Project
- Fish Passage Possibilities
- Exotic Species
- Quiz





Ann Arbor

Jackson

Ypsilanti

Belleville

Romulus

Saline

Milan

Tecumseh

Adrian

Petersburg

Monroe

Hudson

Luna Pier

Morenci

River Raisin Assessment Fisheries Division Special Report Number 23 October, 1998

Table 10.—List of fishes in the River Raisin watershed. Data from: Smith et al. 1981; Towns 1985; C. Latta, University of Michigan, personal communication. Common family names are in bold print. Origin: X = native, C = colonized, I = introduced. Status: O = extirpated, P = recent observations, U = historic record-current status unknown, E = Lake Erie, found in impingement study, Detroit Edison Monroe Power Plant.

125 Species Historically in Watershed



Resident Stream Fish Species



Stream Game Fish Species



Lake Fisheries

- Wampplers Lake

- Largemouth bass, bluegill, pumpkinseed, redear sunfish
- Very good panfish fishery—annual ice fishing tournament
- Lots of bass tournaments and good fishery
- Walleye and northern pike also found
- Surveyed in 2003 & 2009
 - Good panfish size and numbers still present



Lakes (continued)

- Sand Lake
 - Last surveyed in 2003
 - Good bluegill and redear sunfish
 - Good largemouth, walleye, & pike
 - MA redear present (10")



Lakes (continued)

- Vineyard Lake
 - Last DNR survey in 2001
 - Last stocking in 2003 (walleye)
 - About average for bluegill, bass, northern pike, and redear.
 - Walleye were present in 2001 survey, but probably few in number since stocking halted 12 years ago.



Special Species Notes



Silver Shiner (endangered)



Mottled Sculpin



Southern Redbelly Dace (endangered)

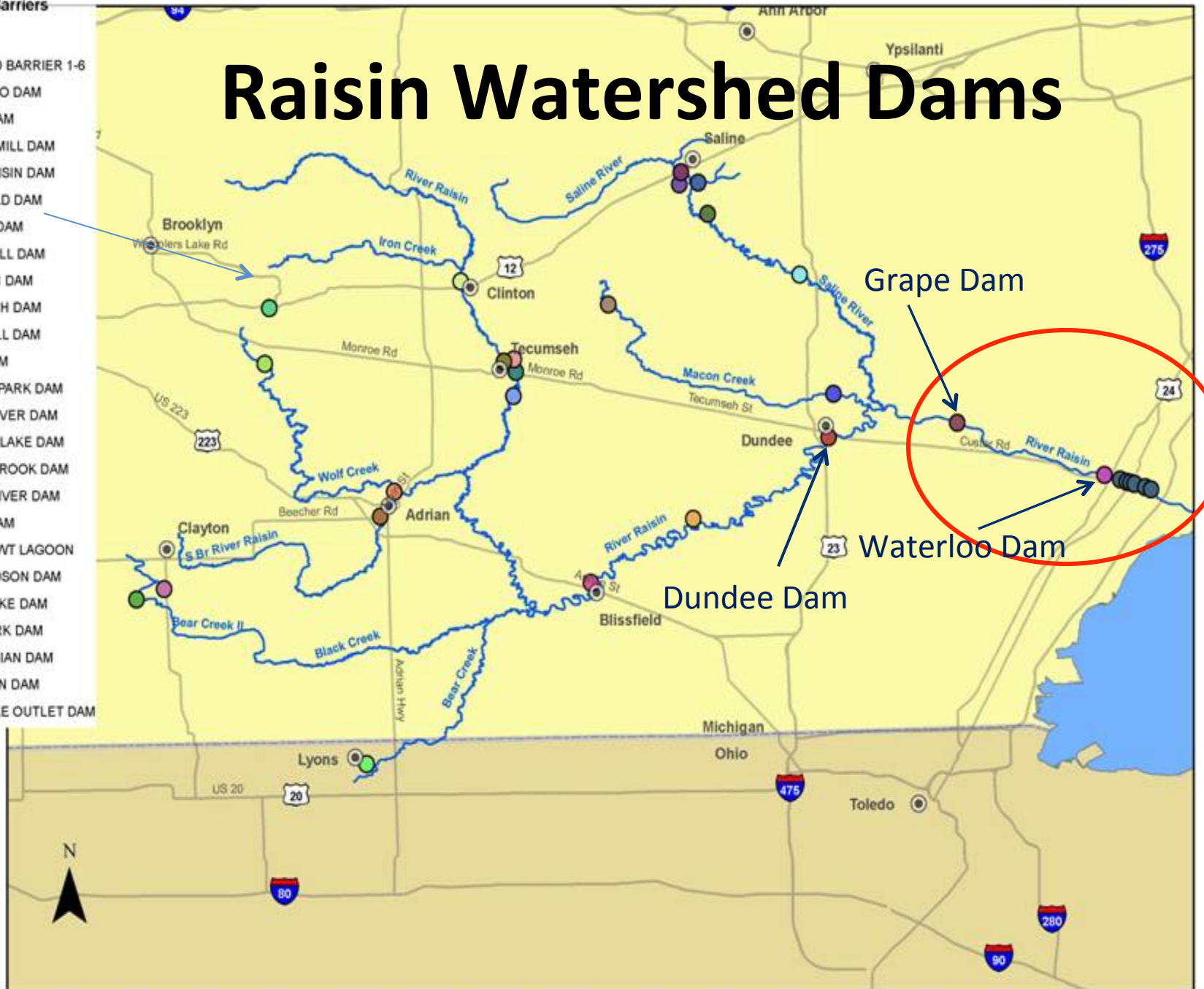


Round Goby

Raisin River Barriers of Interest

- LOWHEAD BARRIER 1-6
- WATERLOO DAM
- GRAPE DAM
- DUNDEE MILL DAM
- RIVER RAISIN DAM
- BLISSFIELD DAM
- QUAKER DAM
- GLOBE MILL DAM
- STANDISH DAM
- TECUMSEH DAM
- ATLES MILL DAM
- MILAN DAM
- CURTISS PARK DAM
- SALINE RIVER DAM
- ELLA LEE LAKE DAM
- SPRING BROOK DAM
- MACON RIVER DAM
- O'NEAL DAM
- LYONS WWT LAGOON
- LAKE HUDSON DAM
- HALEY LAKE DAM
- BURR PARK DAM
- LAKE ADRIAN DAM
- LOCH ERIN DAM
- SAND LAKE OUTLET DAM

Raisin Watershed Dams



Hellenberg Dam



Before



After



Monroe Steet Dam (no. 3)



Before



After

Dundee Dam



Fish Passage Possibilities

- **New species to fish for**
 - Steelhead
 - Great Lakes Muskellunge
 - Suckers (redhorse, white, spotted)
 - White Bass
 - Walleye



Migratory Suckers

White



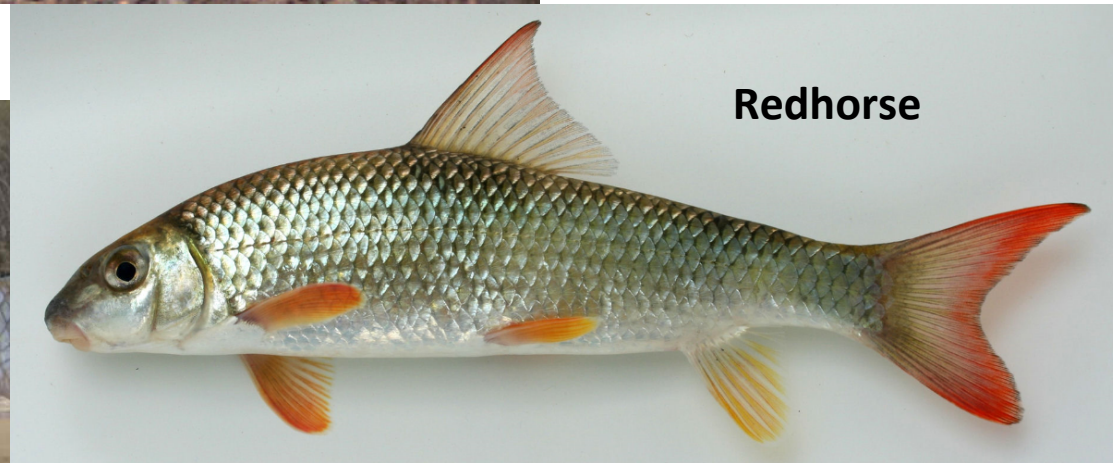
Spotted



Quillback Carpsucker



Redhorse



Fish Passage Possibilities

- Increase in Current Species
 - Smallmouth Bass
 - Northern Pike



Fish Passage Possibilities

- **Miscellaneous Species**

- Lake Sturgeon
- Gizzard Shad
- Logperch and other darters
- Mussels
- GL minnows (emerald shiner, etc.)



Other Issues

- Exotic species
 - Round Goby
 - Sea Lamprey



QUIZ

Name this fish.



Hint: Note size of this adult fish.





QUESTIONS?