



River Raisin
WATERSHED COUNCIL
Partner · Protect · Preserve

Streamlines Newsletter

River Raisin Watershed Council
Partner... Protect... Preserve...

Vol. 8 No. 1
Spring 2020

www.RiverRaisin.org

Wolf Creek Management Plan

Our Mission:

Our mission is to inspire behaviors that promote stewardship, improve water quality, and encourage public participation to protect, preserve, and enhance the River Raisin Watershed.

RRWC seeks volunteers and members to achieve our mission. Please contact us to find out how you can help with or participate in the various activities outlined in these pages. Our success in improving water quality in the River Raisin Watershed depends on you!

Contact Us:

rrwc@lenawee.mi.us
(517)-264-4754

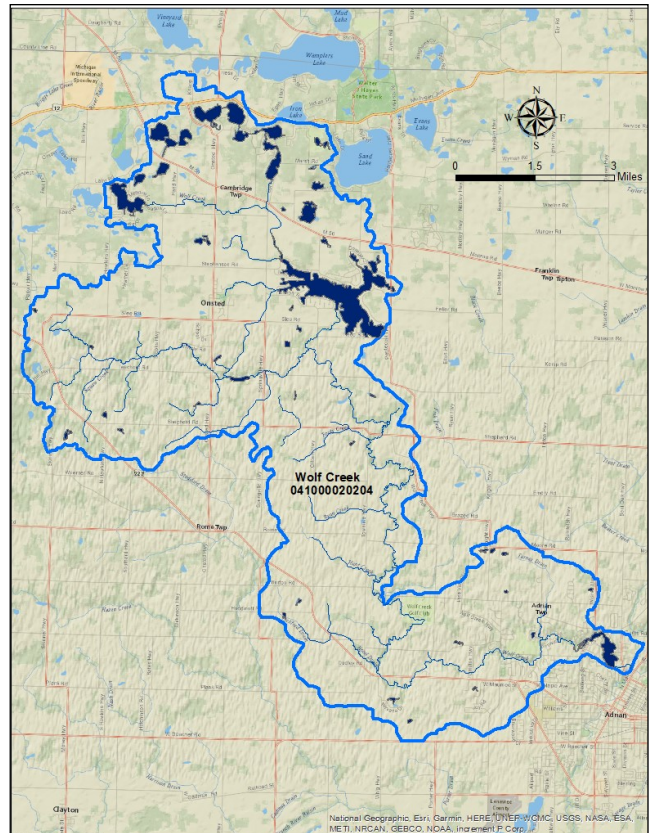
INSIDE THIS ISSUE

Wolf Crk Management Plan	1
Lake Erie Plan	2
Kroger Community Rewards	2
Discover the Raisin Grant	3
Erb Family Foundation	3
Poster Contest	3
COVID-19	4
Upcoming Events	4

The Loch Erin Property Owners Association (LEPOA), with significant help and support from RRWC, and lake management consultant Restorative Lake Sciences has submitted a proposal to fund the development of a Wolf Creek Watershed Management Plan. The proposal was delivered to the Michigan Dept. of Environment, Great Lakes, and Energy (EGLE, formerly DEQ) offices in Lansing on March 10, 2020. If approved, this would provide the majority of the funding to research and prepare the plan. Watershed management plans can cover watersheds and sub-watersheds of a variety of sizes. The Wolf Creek Watershed is about 36,000 acres and sits within the South Branch Watershed, situated inside the larger River Raisin Watershed. Watershed management plans can change over time as conditions within a watershed change.

The watershed management plan proposal requires matching funds from local sources which will be given as time and material provided by LEPOA, RRWC and Adrian's utility department. Our team was successful in receiving letters of support from 12 local government agencies and citizen groups. EGLE will be reviewing all statewide Management Plan funding requests for several months, and we have been advised successful funding recipients may be notified in late summer or early fall of 2020. The plan would increase local community awareness and sensitivity to Wolf Creek water quality preservation and provide opportunities for the community to engage. Further, the detailed study of the watershed would likely expedite any remedial actions requiring State approvals and provide for better opportunity for enforcement of State guidelines.

A watershed management plan for the Wolf Creek



Wolf Creek begins at Wolf Lake in northern Lenawee County and flows southeasterly through Loch Erin and ultimately into Adrian's Lake Adrian.

Watershed will be helpful in solving many local water quality issues along with problems in the water miles away, including in Lake Adrian, the main source of the city's water supply. All the water in the Wolf Creek Watershed eventually makes its way into the River Raisin which flows into Lake Erie. Lake Erie is notorious for its large harmful algal blooms caused by excess nutrients entering the lake from the surrounding land. By addressing local issues in this smaller watershed, the positive consequences are seen across a much larger area.

Written by Phil Kittredge, RRWC Executive Committee member & Trustee of LEPOA Board of Directors



A harmful algal bloom on Lake Erie



Farmer-Led Watershed Conservation
Western Lake Erie Basin (WLEB)

See updated events at riverraisin.org/calendar



The Plan for Lake Erie

The Western Lake Erie Basin (WLEB) contains about 6.5 million acres and stretches between Indiana, Michigan, and Ohio. Around 75% of the land is used for agriculture, predominantly corn, soybeans, and wheat production. There are a few major cities located in the WLEB including Toledo, OH, Fort Wayne, IN, and Lima, OH, and many smaller towns and cities. All of the water contained in the WLEB flows into Lake Erie. Everything we do on our land in the River Raisin watershed, whether it's agriculture production or city living, causes different nutrients and pollutants to get in that water.

Lake Erie has been plagued with harmful algal blooms for years. Algae, which occur naturally, start growing seemingly uncontrollably (blooming) when there is an excess of nutrients to feed them. These harmful algae blooms were responsible for the Toledo water crisis in 2014 when the city had to shut down its water supply after harmful algae was found in drinking water. The toxins in harmful algae are enough to kill pets who consume it and make people sick.

The Lake Erie Adaptive Management Plan is a part of Michigan's Domestic Action Plan (DAP) to cut down the amount of nutrients entering Lake Erie and prevent these harmful algae blooms. The Adaptive Management Plan was created from using input from people living in the WLEB by different state agencies.

Some of the main goals of the DAP include reducing the harmful algal blooms in the WLEB and eliminating the hypoxic zone (dead zone) in the central basin.



Map of the Western Lake Erie Basin.

Some goals are more specific to priority watersheds, of which the River Raisin is one. These goals include reducing different types of Phosphorus (nutrient) loads in the River Raisin by 40% by 2025. The Adaptive Management Plan supplies more specific objectives to achieve these goals, such as strengthening partnerships with local farmers and increasing the number of acres of farmland enrolled in the Michigan Agriculture Environmental Assurance Program.

The Adaptive Management Plan will be reviewed and revised every 2 years and the DAP will be reviewed and revised every 5 years.

RRWC and the Farmer-Led Watershed Conservation Group (FLWCG) attend meetings about the Adaptive Management Plan and DAP and adjust goals to reflect outcomes in each plan. The FLWCG wants to expand its outreach to younger farmers, women in agriculture, and Certified Crop Advisors. If you fall into these categories or are interested in learning about the FLWCG, please get in touch with RRWC or talk to your local county conservation district.

Kroger Community Rewards Program

We are excited to announce our partnership with the Kroger Community Rewards Program! If you have a Kroger account, you're eligible to get deals and coupons for yourself AND you can earn money for RRWC each time you swipe your Shoppers Card. This is a free way you can help RRWC earn a little extra money for our different programs.

All you need to do is create or edit your Kroger account. You will search for the River Raisin Watershed Council (or ID Number "VD032") on the Community Rewards page to enroll. You can visit www.riverraisin.org to click through screenshots of the enrollment process.

This will not cost you anything. The Kroger Community Rewards Program accepts different non-profit organizations who apply for this opportunity. Kroger allocates a certain amount of money towards this program, so nothing extra is charged to you. Thank you for your help!

2020 Discover the Raisin Award Winners

6th—10th grade teachers across the watershed were invited to apply to the Discover the Raisin program with a project for their class to incorporate the River Raisin. The project could be in any subject as long as it got students learning about the river and exploring its importance.

Three teachers applied and were rewarded \$200 toward their project! Here are the creative teachers and their projects:

Renee Gilson-Clinton High School:

Project: Watershed Investigations—Tools to Explore Wetlands

This is a 3 part project. First, students will sample macroinvertebrate communities in the River Raisin using leaf bags purchased with the award. Second, students will visit a vernal pool. They will investigate what creatures make it a vernal pool and take samples wearing hip waders, also purchased with the award. Third is a trip to the Taylor Road Park Marsh. Students will be in groups as they investigate the flora and fauna of the area, take water samples for testing, and looking for

aquatic organisms. Students will be using water test kits and identification books purchased with the help of this award.

Mrs. Gilson plans to write up outcomes of each unit for her class's Twitter page and in emails to parents.

Jackie Murray-Clinton Middle School:

Project: Water Quality in the River Raisin

Mrs. Murray has always incorporated field trips to Tate Park along the River Raisin with her students. Typically they collect water samples for water quality testing. She would like students to expand water quality testing to include a biological aspect. The award will be used to purchase nets and waders to collect macroinvertebrates.

Mrs. Murray's classes will use Twitter and Facebook to share their findings. Students will also write a short news story which may be published in the Clinton Local newspaper. Mrs. Murray also presented this project at the Michigan Science Teachers Association in March.

Katie Heineman-Blissfield Middle School:

Project: Water Quality Testing in Blissfield

Students will tour the Blissfield wastewater facility to learn how water is treated and recycled. Next each student will take water samples from the River Raisin and the school's tap to analyze different parameters. They will work in groups to make presentations about their findings and work as a class to discuss comparisons between the river water and tap water, incorporating knowledge from their trip to the treatment plant.

Mrs. Heineman will post photos of the field trips to the school/class Facebook and Instagram pages, the school district's quarterly newsletter, and with the Daily Telegram.

Thank you, teachers! We know you work hard to teach our students and we want to recognize even more awesome teachers in our watershed in 2021!



Erb Family Foundation Grant

The Erb Family Foundation provides grant opportunities for different conservation based organizations, like local watershed councils, especially in the Western Lake Erie Basin. They provide the grant funding for the Farmer-Led Watershed Conservation group. RRWC was encouraged to apply for a grant that would award \$20,000 for general operations for two years (\$10,000 each year). We applied for this grant in February and it was approved in March!

We are grateful for the Erb Family Foundation and look forward to using these funds to create more programs for the community. RRWC wants to connect more people to the outdoors and teach more kids and families about our awesome natural resources. With the help of this grant we will be able to accomplish more awareness through fun things in the near future!

2020 Poster Contest

With schools being switched online, RRWC hoped to bring a fun and educational activity to kids stuck at home. The "Water You Doing to Keep It Clean" Poster Contest was launched in April for students in Preschool through 12th grade to teach us how they keep water clean. Over 20 beautiful and informational posters were submitted and 5 winners were chosen by our Executive Committee:

PreK—K: Emmelia C. Kindergarten at Harvest Elementary in Saline

1st—3rd: Josslyn H. 3rd Grade at Clinton Elementary

4th—6th: Raegan C. 6th Grade at Saline Middle School

7th—9th: Aylin M. 9th Grade at Adrian High School

10th—12th: Karlee S. 11th Grade at Clinton High School

To see the winner's artwork, visit riverraisin.org. Each won their own adventure kit to keep exploring and learning how to keep our water clean.



River Raisin

WATERSHED COUNCIL

Partner · Protect · Preserve

Partner... Protect... Preserve...

320 Springbrook Ave.

Adrian, MI 49221

(517)-264-4754

E-mail: rrwc@lenawee.mi.us

Website: www.riverraisin.org

Get Involved! - Join today!

Individuals: \$25

Non-Profit: \$50

Corporations

Supporter: \$100 - \$499

Partner: \$500 - \$1,000

Sponsor: \$1,000 +

WE NEED YOU! - Become a member today.

Members contribute to the strength of RRWC through membership dues, volunteer activities, and participation.

The RRWC is run by a board of directors appointed by local government members who pay annual dues based on jurisdiction population. We encourage others to join and provide additional support to help us with programs and activities that protect and preserve the River Raisin.

Upcoming Events; 2020

Spring Semi-Annual Meeting @ Cabela's in Dundee: TBD

Nature Walk: Wilderness Park, Saline: Jul. 22, 6:30-8pm

Farmer-Led Watershed Conservation Live Webinar: Date in July TBD

**RRWC will continue to follow Executive orders and guidelines to keep our volunteers and community healthy. Events may change. Please keep updated by joining our email list (rrwc@lenawee.mi.us) or follow our Facebook page.*

See website or contact us for more details!
www.riverraisin.org/calendar

RRWC's Covid-19 Response

No one could have predicted such a bizarre start to our springtime. The pandemic that swept the world really complicated everyone's schedule and normal every-day living. We want to thank everyone for their patience and understanding that RRWC wasn't able to allow many activities to continue as scheduled for the safety of our community. We hope you were able to enjoy us electronically and utilized our Facebook page for different home activities to do with your children and families. The outdoors can be a place of healing and we encourage you still to seek out parks and preserves to get some fresh air, use your legs, and find your sense of wonder. You

can find a list of preserves and parks at many of our county or city websites.

While we're still in the midst of the pandemic, please use social distancing when you're outdoors on the trails, wear proper personal protective gear when you're out, and most importantly, be kind to one another.

Thank you to all those deemed essential workers for continuing to do your job and provide for everyone else! Thank you to everyone who has stayed home to prevent the spread of this disease! Thank you to everyone for your patience!

Partner

Donate today!

Membership dues and donations fund activities and projects throughout the watershed. Contact us for more information or donate online today!

Protect & Preserve

We promote stewardship in educating people about what YOU can do to help us protect and preserve our natural resources in the River Raisin Watershed.

Promote

Check out our website at:

www.RiverRaisin.org

Find us on Facebook & Instagram!
RRWC Merchandise is available - Order t-shirts and hats online today!

Executive Committee

Chair:

John Calhoun

Columbia Township Representative, Jackson Co.

Vice Chair:

Harry Sheehan

Chief Deputy Water Resources

Commissioner

Representative, Washtenaw Co

Secretary:

Sybil Kolon

Manchester Township

Representative, Washtenaw Co.

Treasurer:

K Z Bolton

Lenawee County

Commissioner

Representative, Lenawee Co.

Director:

John Chandler

Summerfield Township

Representative, Monroe Co.

Director:

David Hoffman

County Commissioner

Representative, Monroe Co.

Director:

Phil Kittredge

Cambridge Township Representative, Lenawee Co.

Outreach Coordinator:

Katie Goplerud-Smith

rrwc@lenawee.mi.us

Executive Director:

Stephen May

steve.may@lenawee.mi.us