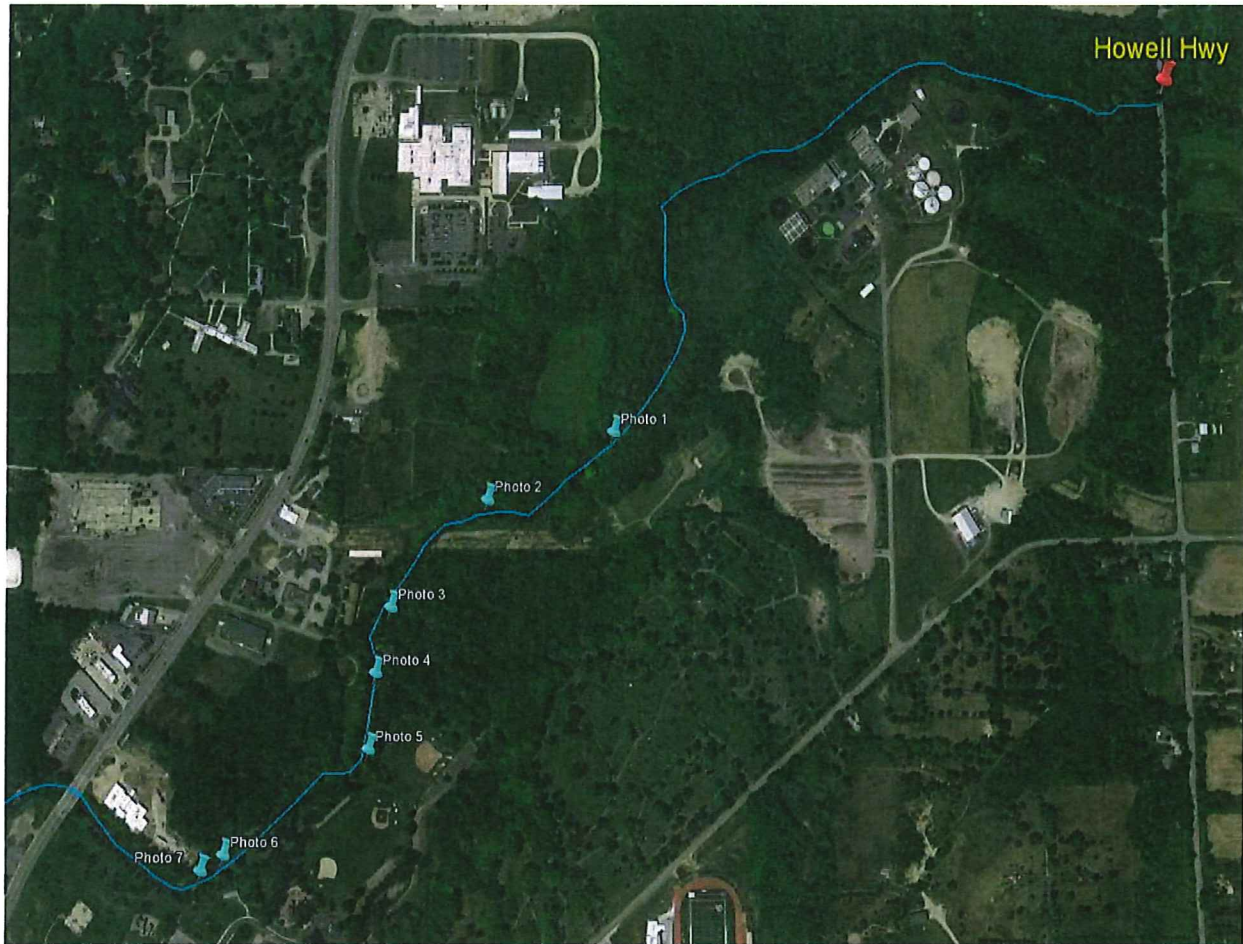


**APPENDIX E –
DEPTH ISSUE INSPECTION PHOTOS**

River Depth Issues

Section 1: Howell Highway to Island Park



Locations of Depth Issues in Section 1 (Marked with Blue Pins)

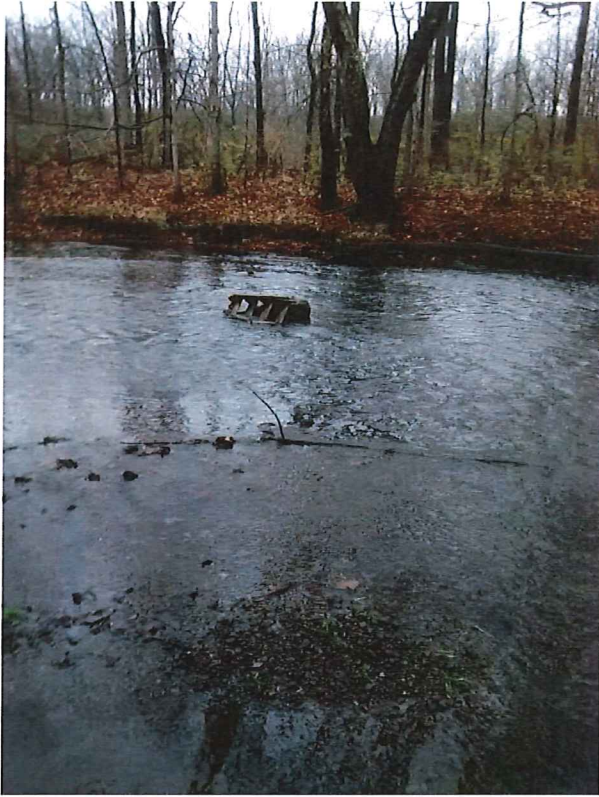


Photo 1 (Section 1 – east bank looking across river): Area near the eastern bank is shallow

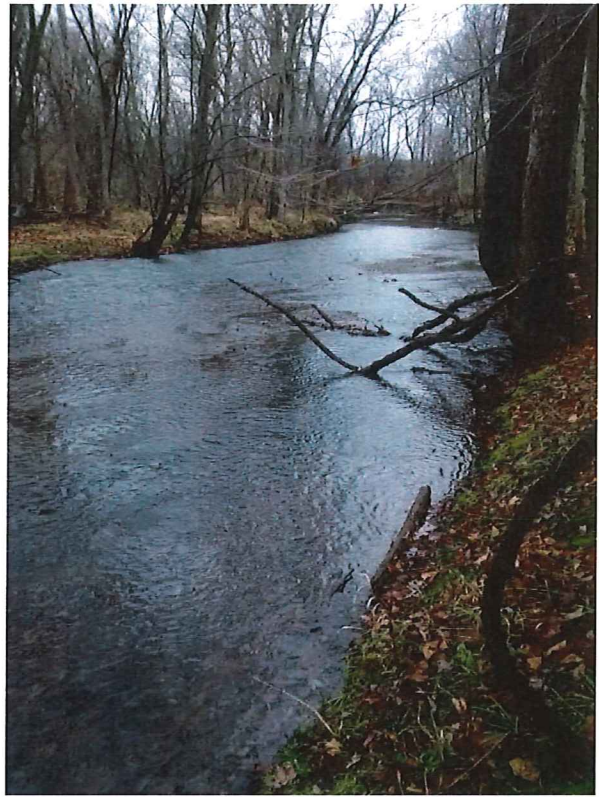
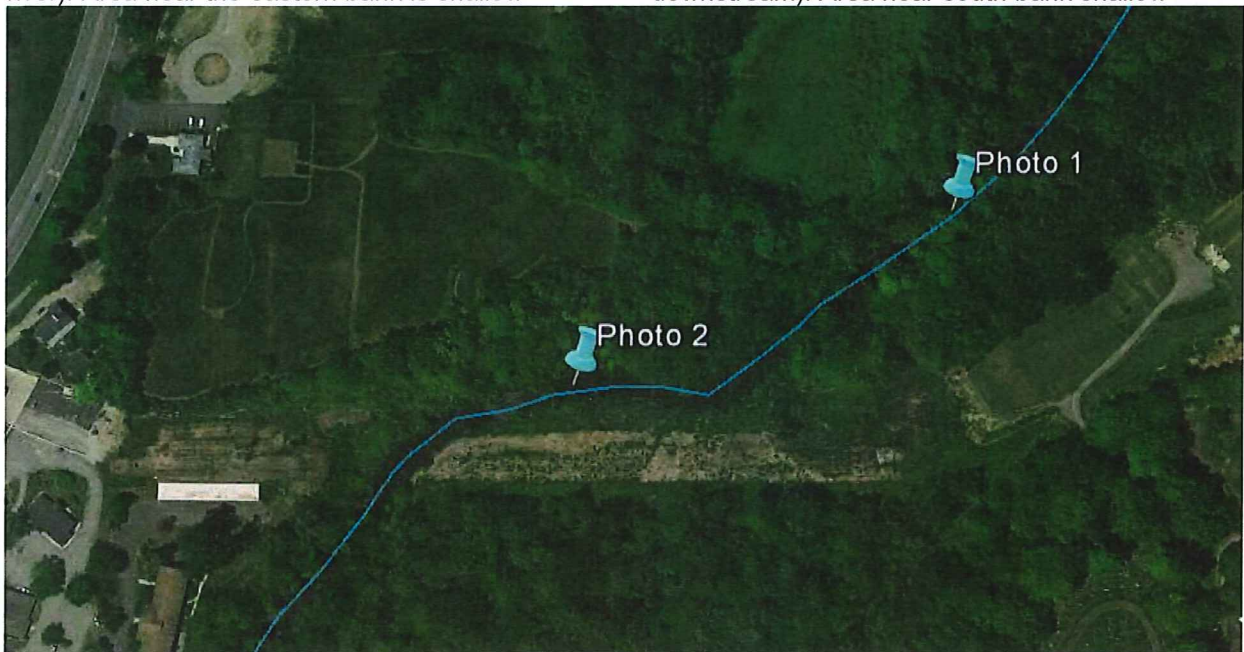


Photo 2 (Section 1 – south bank looking downstream): Area near south bank shallow



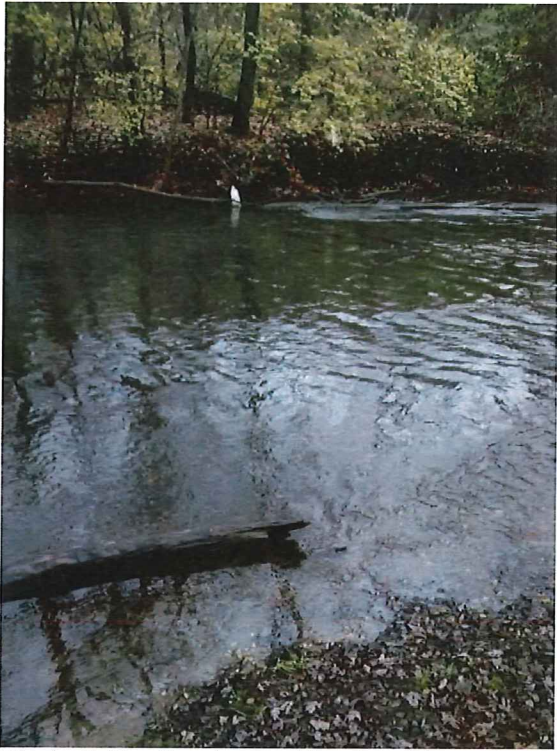


Photo 3 (Section 1 – east bank looking across river): Shallow area in river

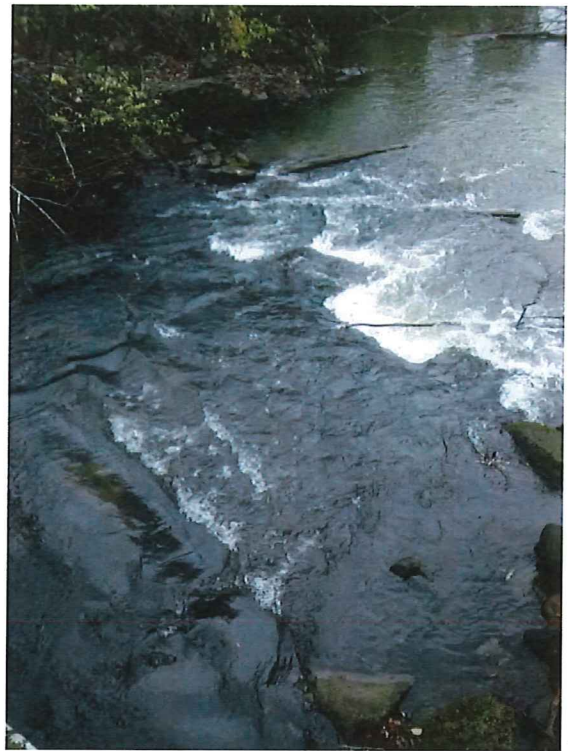
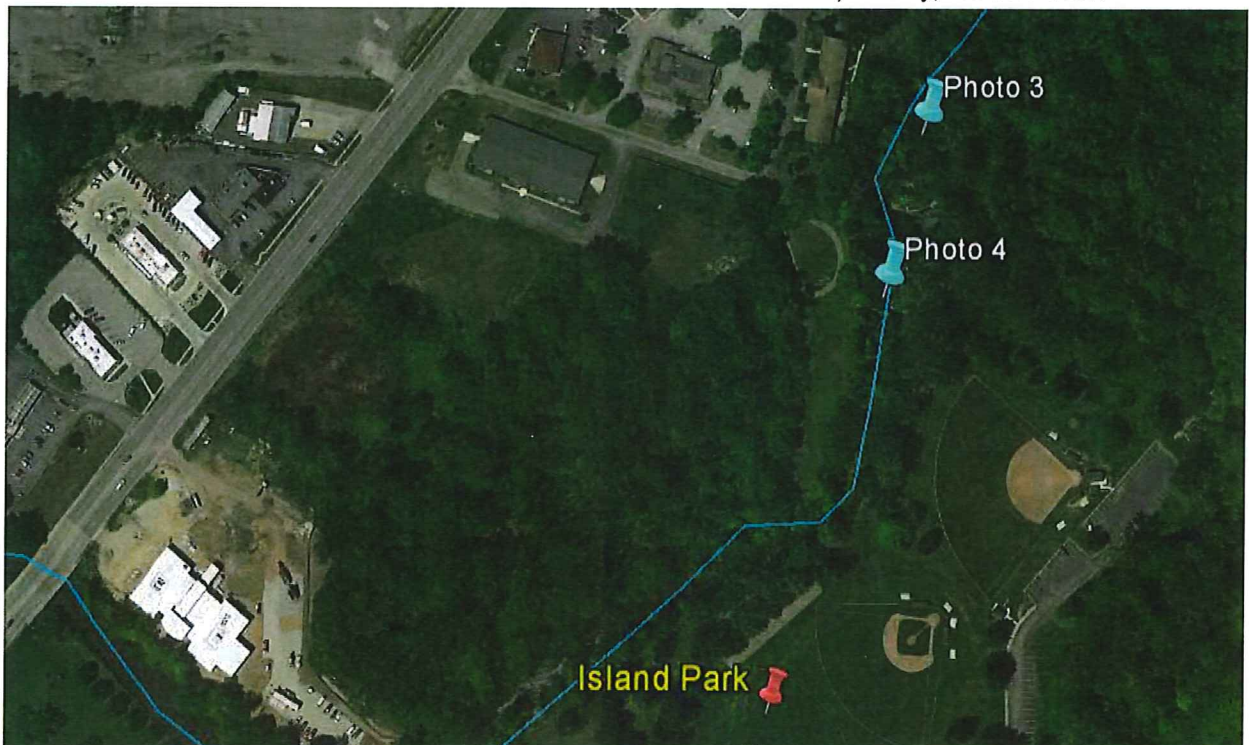


Photo 4 (Section 1 – east bank looking downstream): Rocky, shallow water



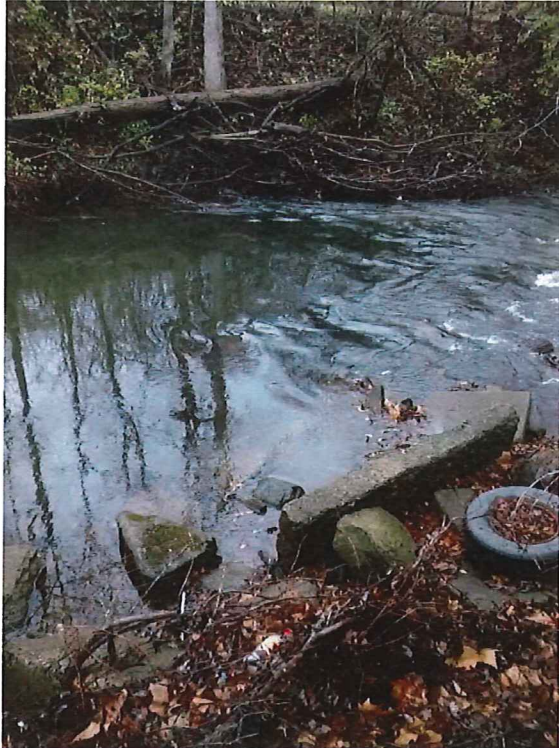


Photo 5 (Section 1 – east bank looking across river): Large rocks and debris on bank creating turbulent flow conditions in river

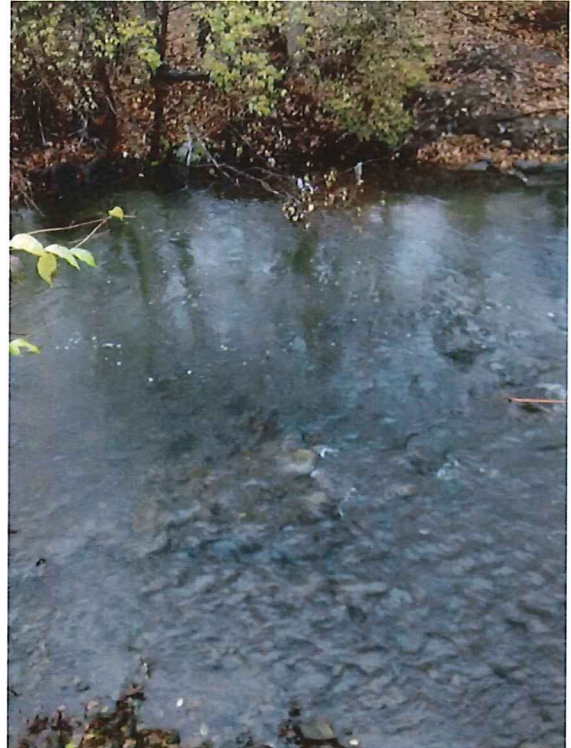


Photo 6 (Section 1 – east bank looking across river): Shallow rocky area near east bank

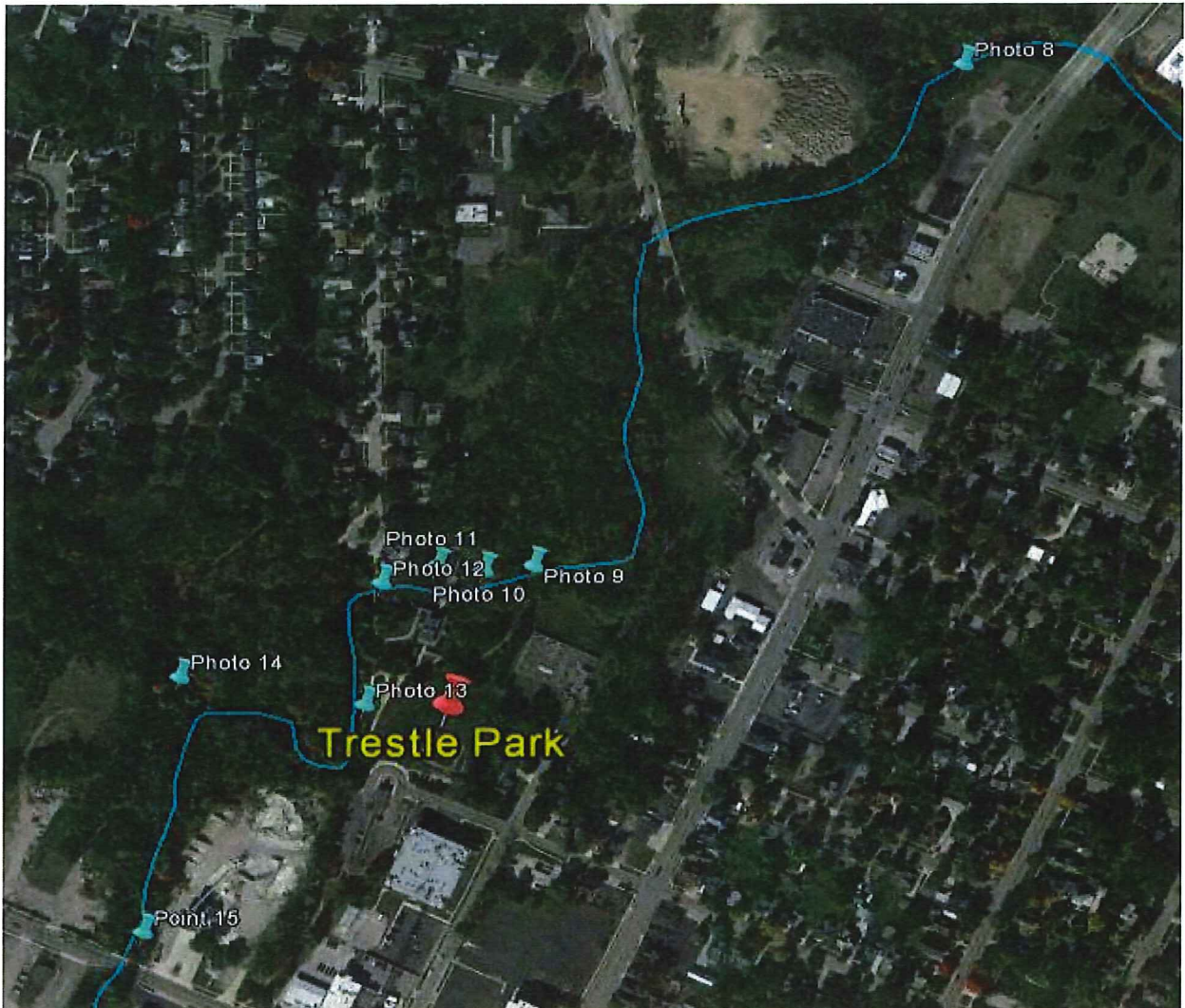




Photo 7 (Section 1 – east bank looking across river at the bend): Shallow and rocky turbulent flow conditions across river



Section 2: Island Park to Trestle Park



Locations of Depth Issues in Section 2 (Marked with Blue Pins)



Photo 8 (Section 2 – east bank looking downstream): Shallow area near island in center of river

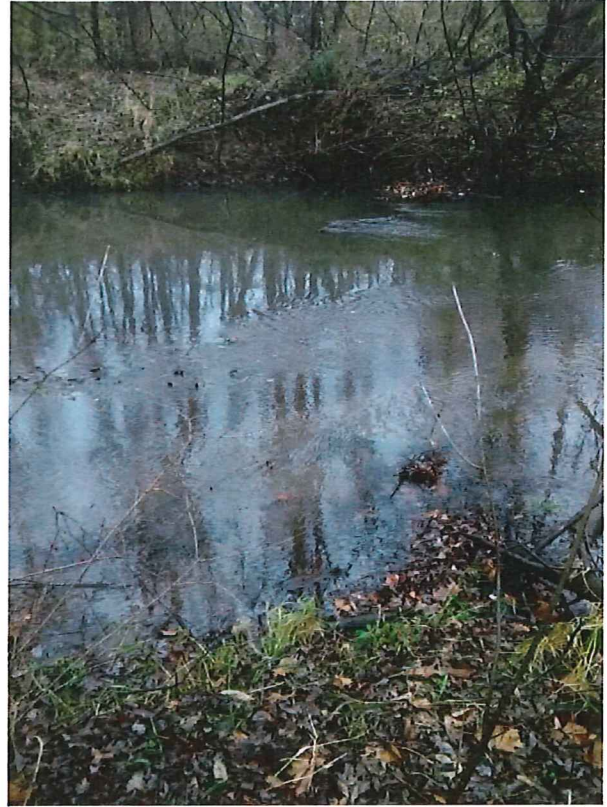
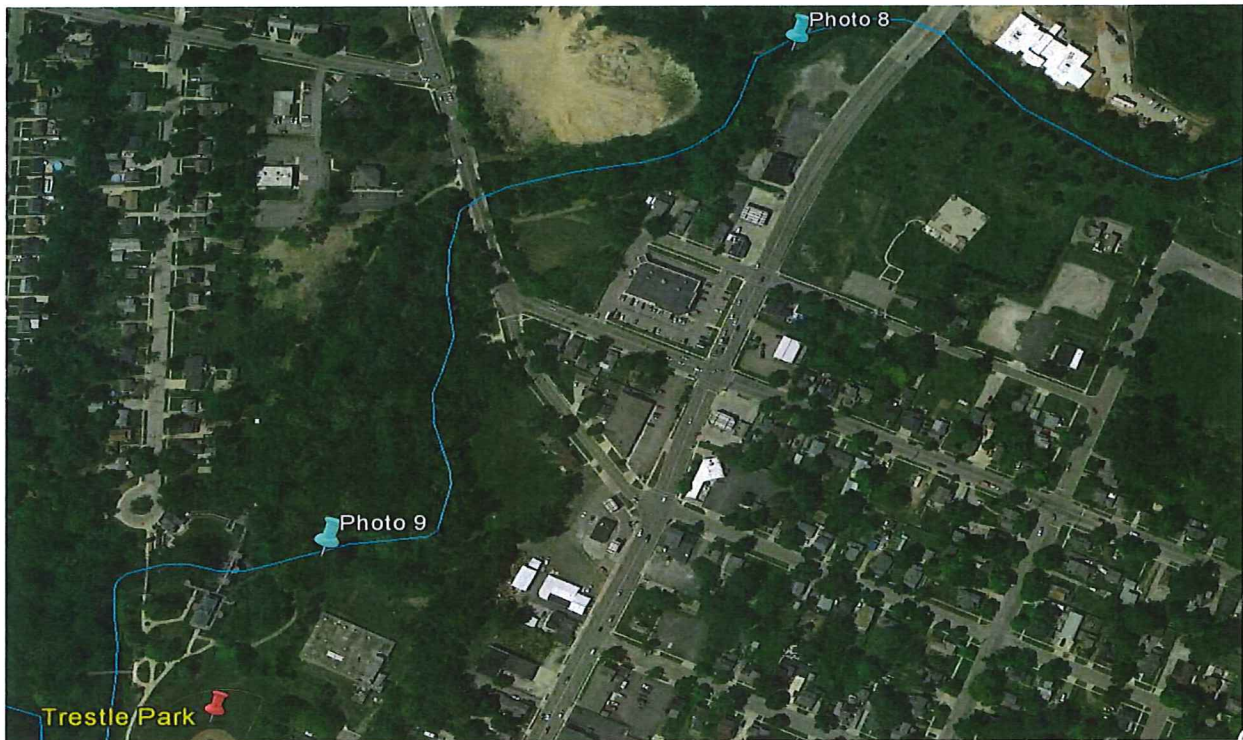


Photo 9 (Section 2 – south bank looking across river): Shallow spot near south bank



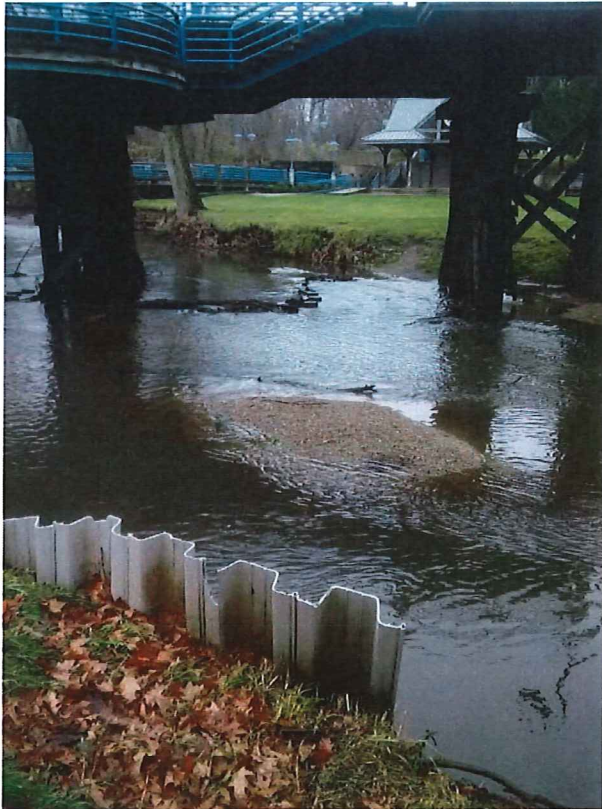


Photo 10 (Section 2 – south bank looking upstream): Shallow spot under bridge

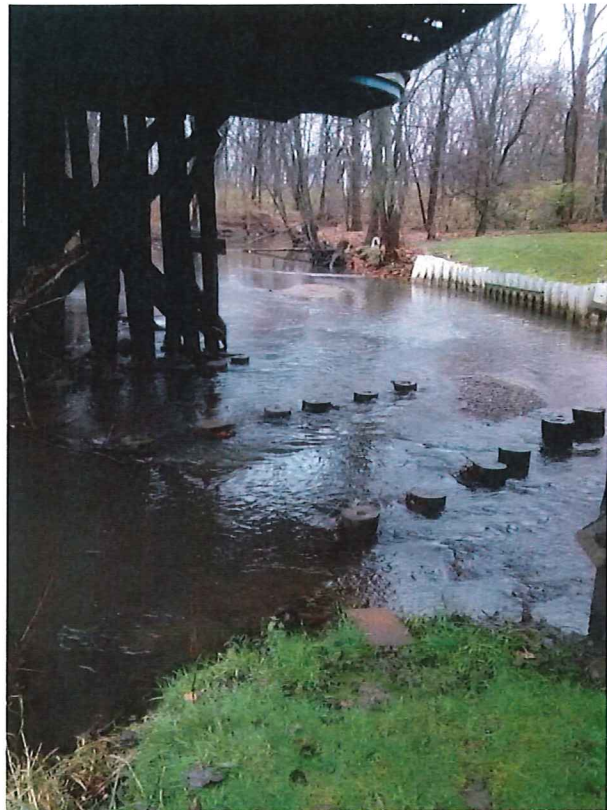


Photo 11 (Section 2 – south bank looking downstream): Shallow area under bridge with posts embedded in ground

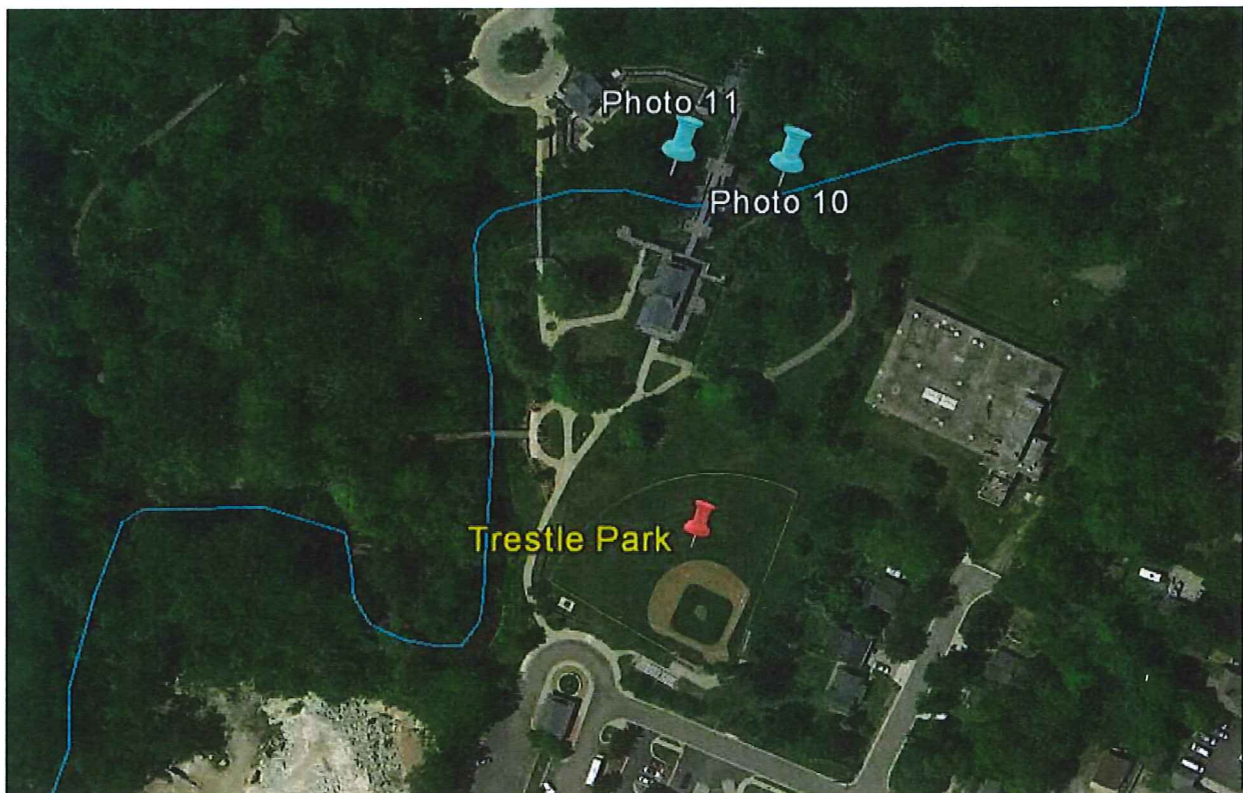
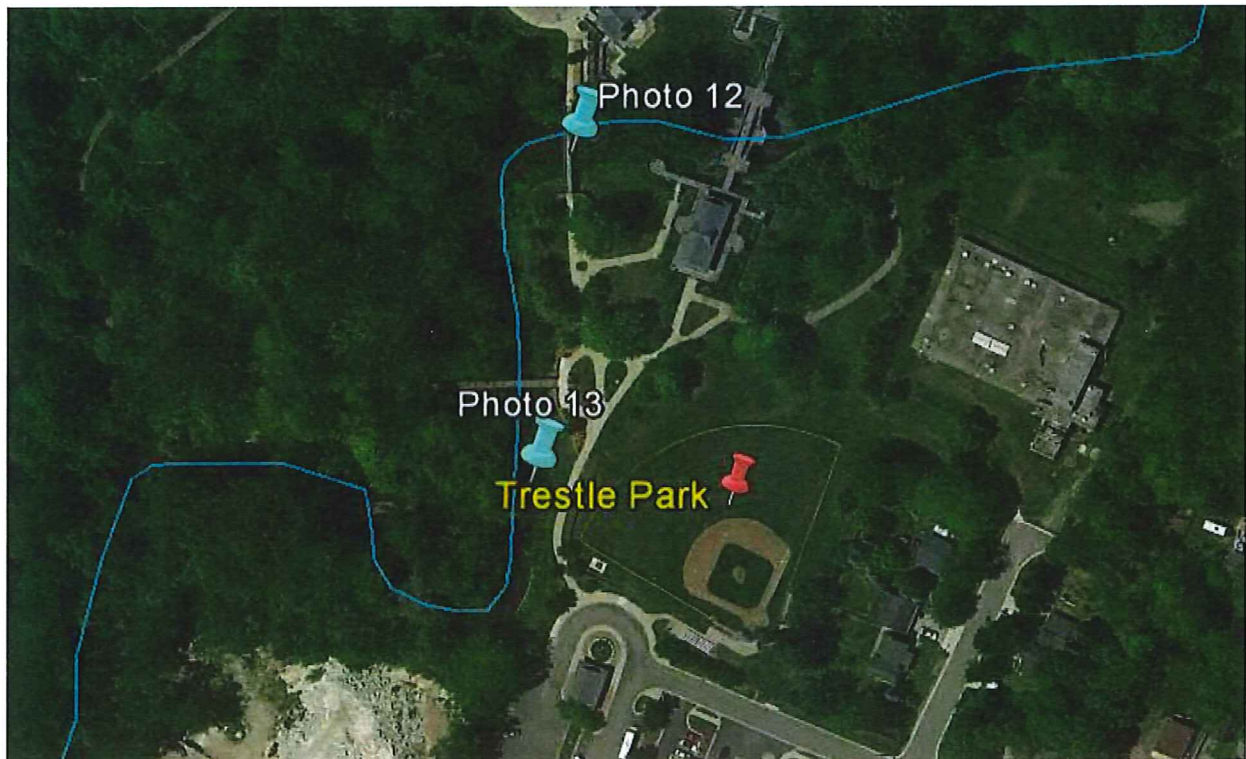


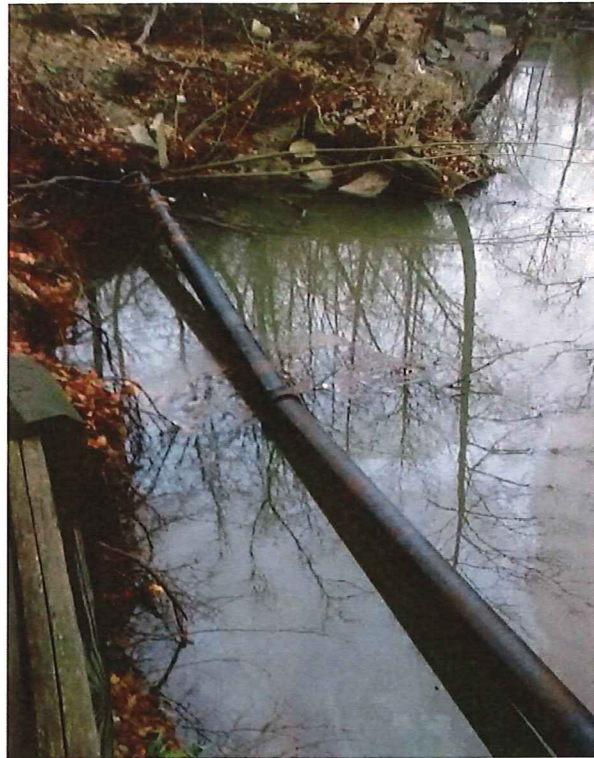


Photo 12 (Section 2 – north bank on Kiwanis Bridge looking down): Rocky, shallow conditions under walking bridge

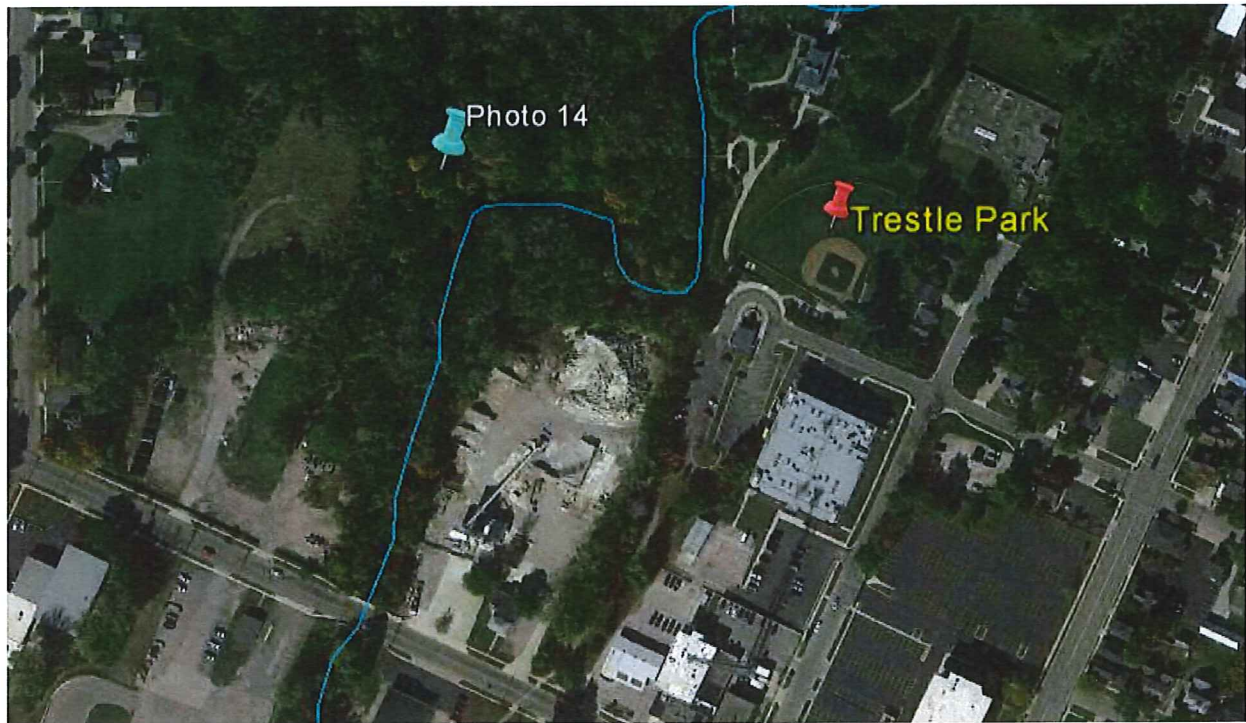


Photo 13 (Section 2 – east bank looking across river): Shallow rocky conditions creating turbulent flow

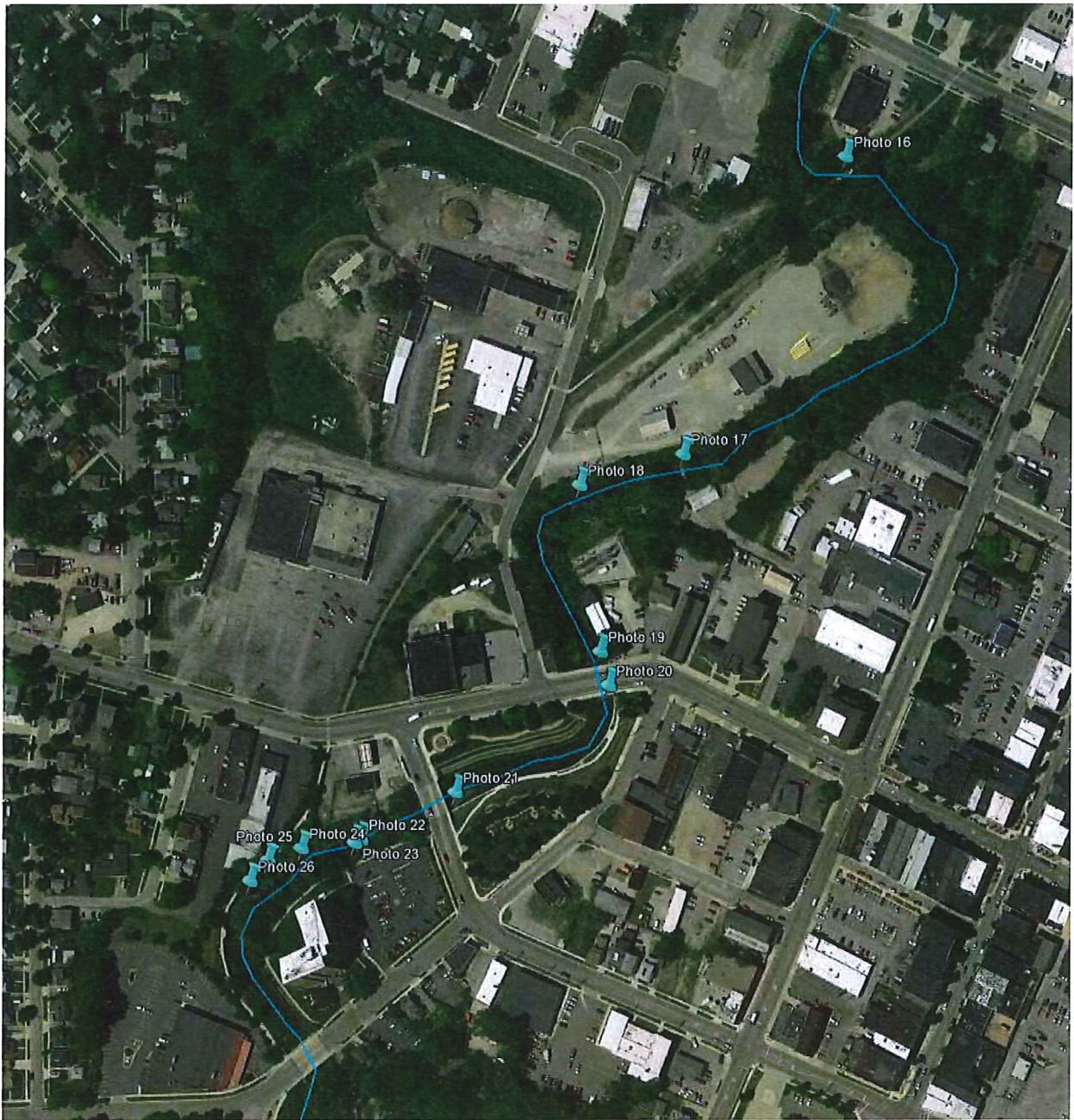




*Photo 14 (Section 2 – west bank on Kiwanis trail):
Pipe crossing shallow area north of main river area*



Section 3: Trestle Park to College Avenue



Locations of Depth Issues in Section 3 (Marked with Blue Pins)



Photo 16 (Section 3 – Looking down from walking bridge): Shallow area under bridge

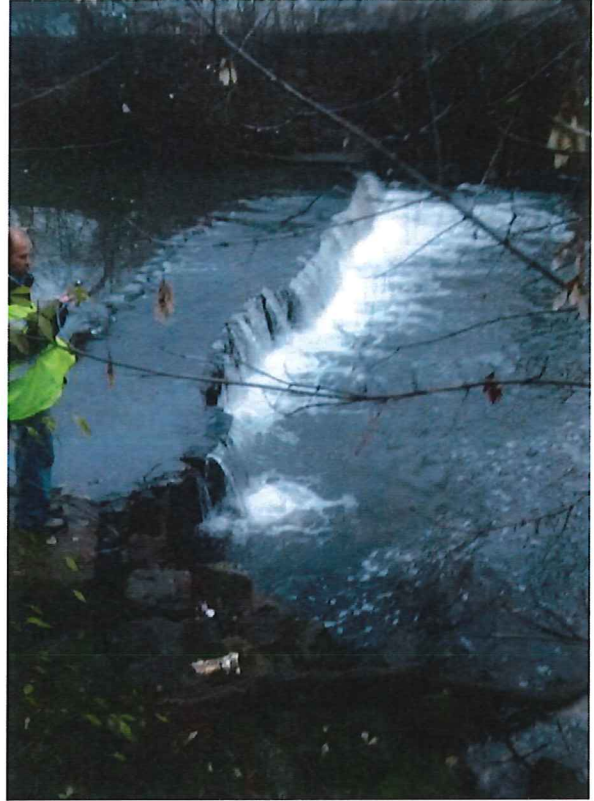
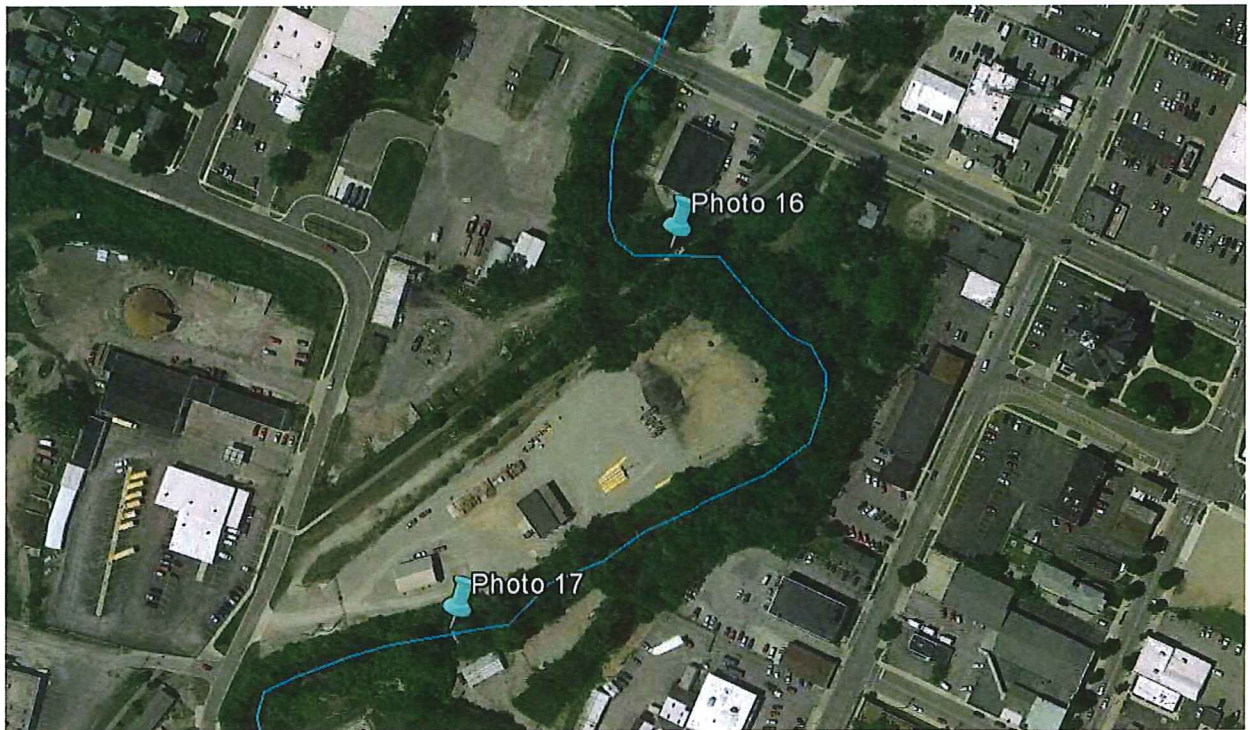


Photo 17 (Section 3 – south bank looking across river): Concrete dam in river creating a 2-foot drop



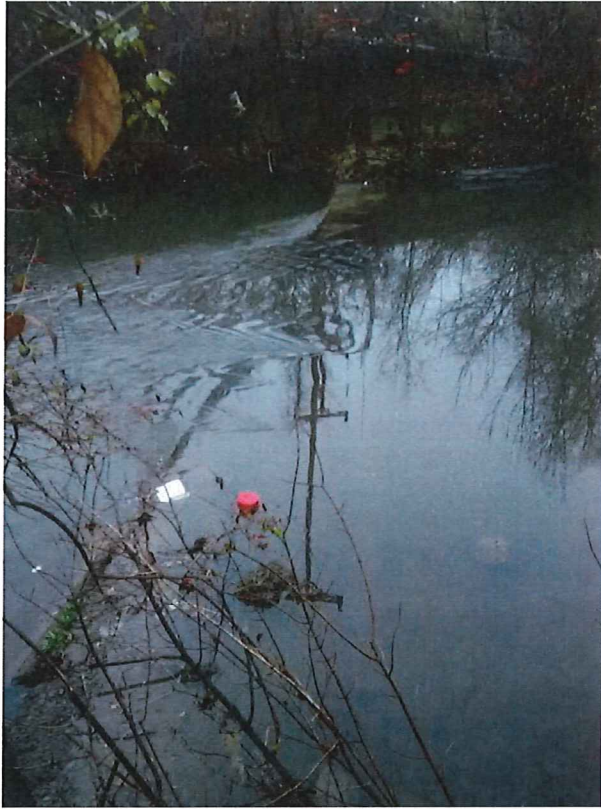


Photo 18 (Section 3 – south bank looking across river): Concrete dam in river mostly submerged

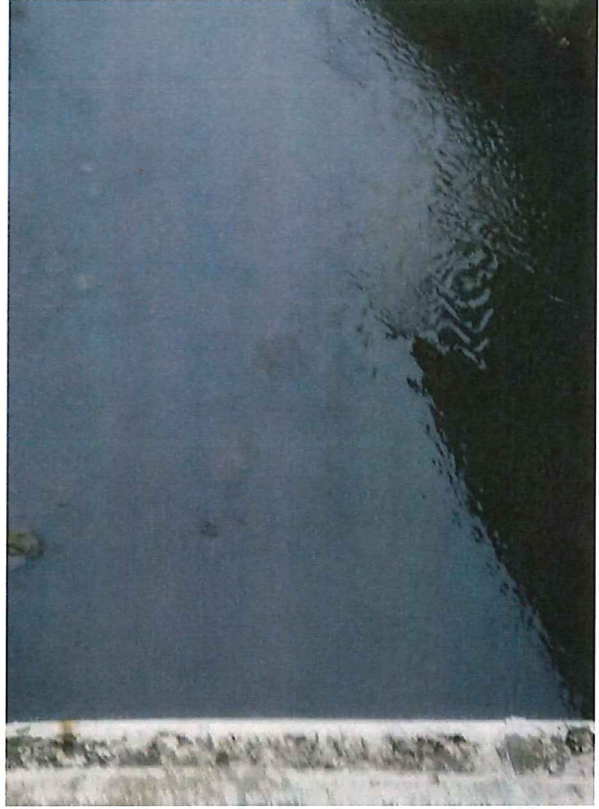


Photo 19 (Section 3 – Looking down from W Maumee Street Bridge): Shallow rocks under bridge

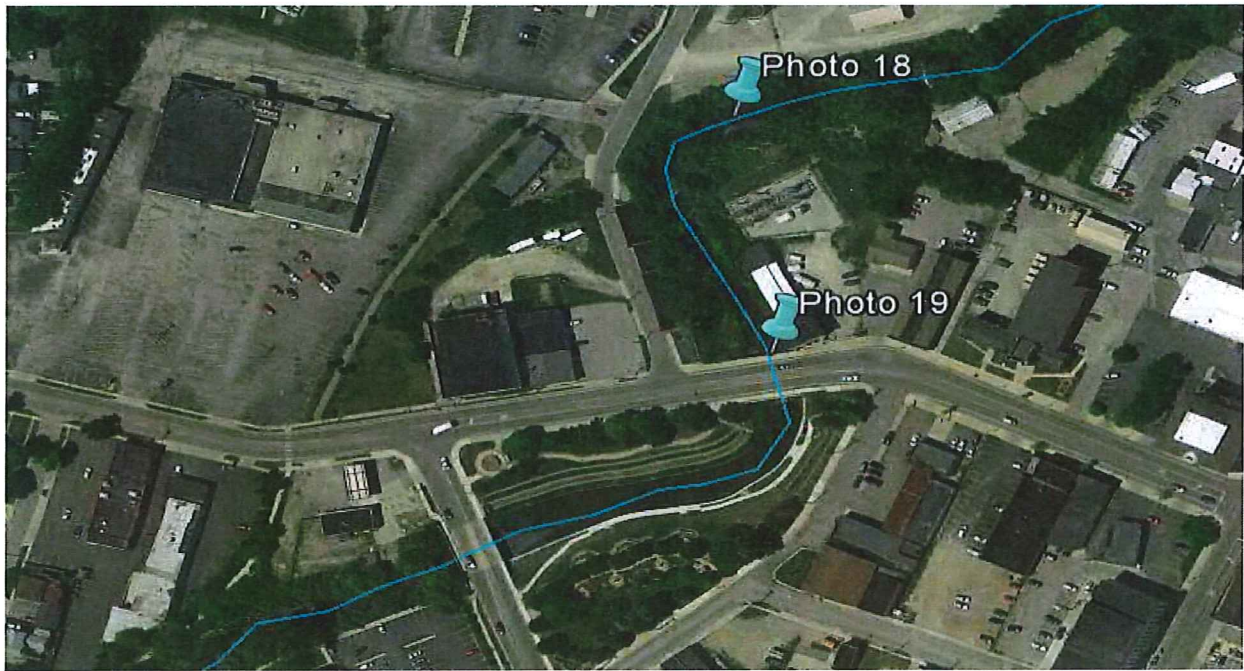




Photo 20 (Section 3 – east bank looking across river under Maumee St. Bridge): Rocks under bridge create shallow conditions in river.

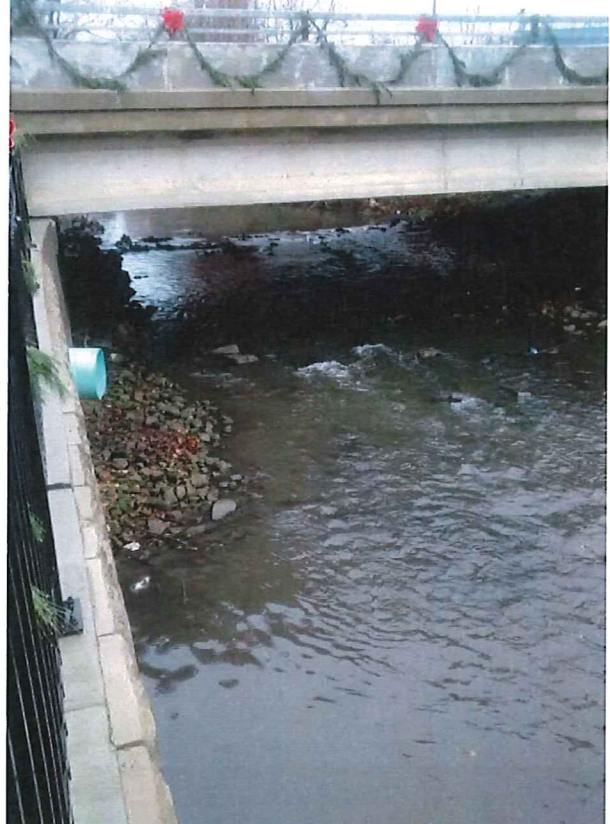
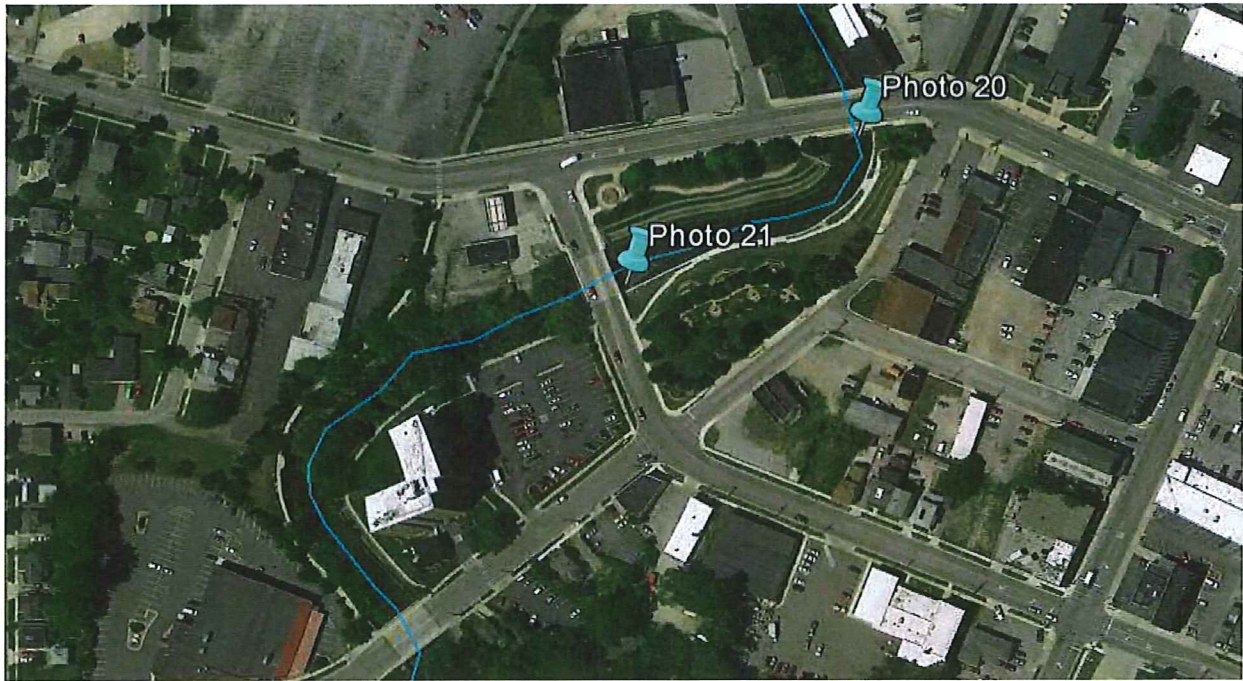


Photo 21 (Section 3 – south bank looking upstream under W Church St. Bridge): Rocks under bridge create rough shallow flow conditions.



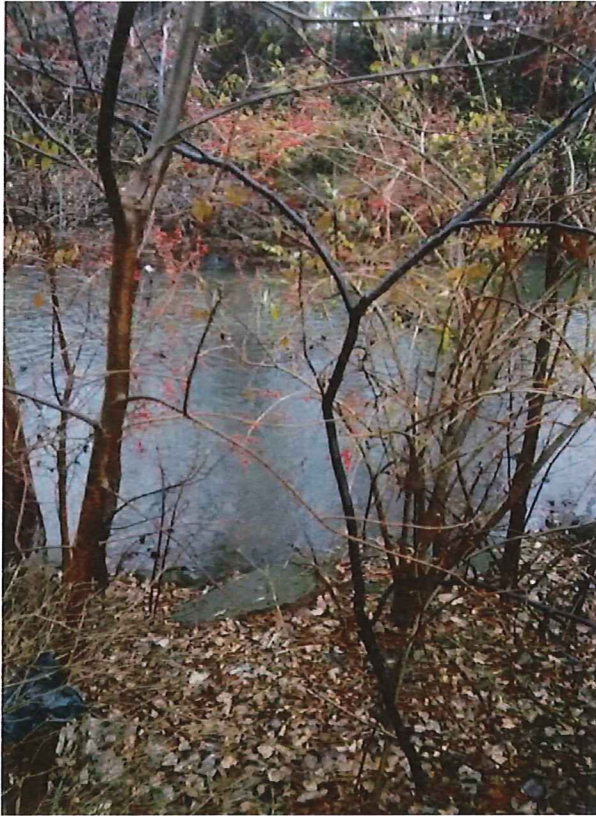


Photo 22 (Section 3 – south bank looking across river): Rocky and shallow area in river

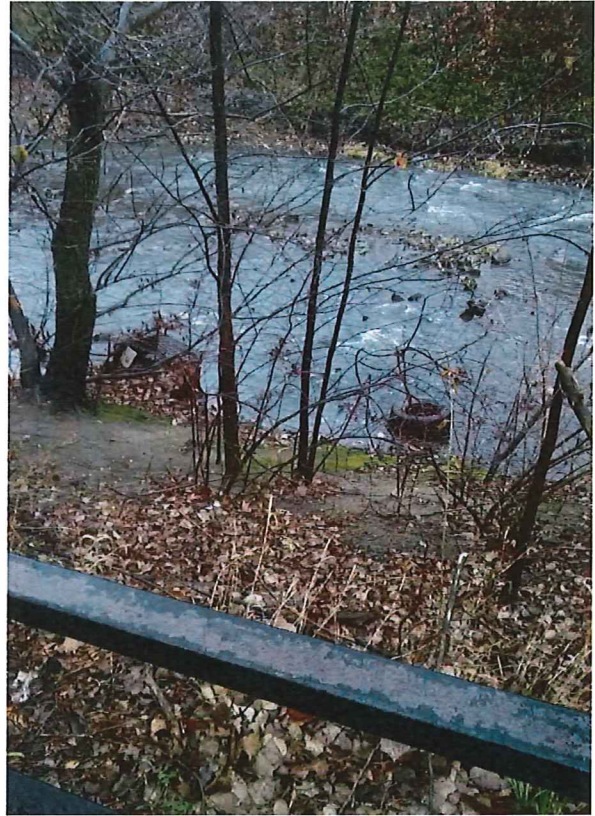


Photo 23 (Section 3 – south bank looking across river): Rocky and shallow area near south bank and turbulent conditions on north bank

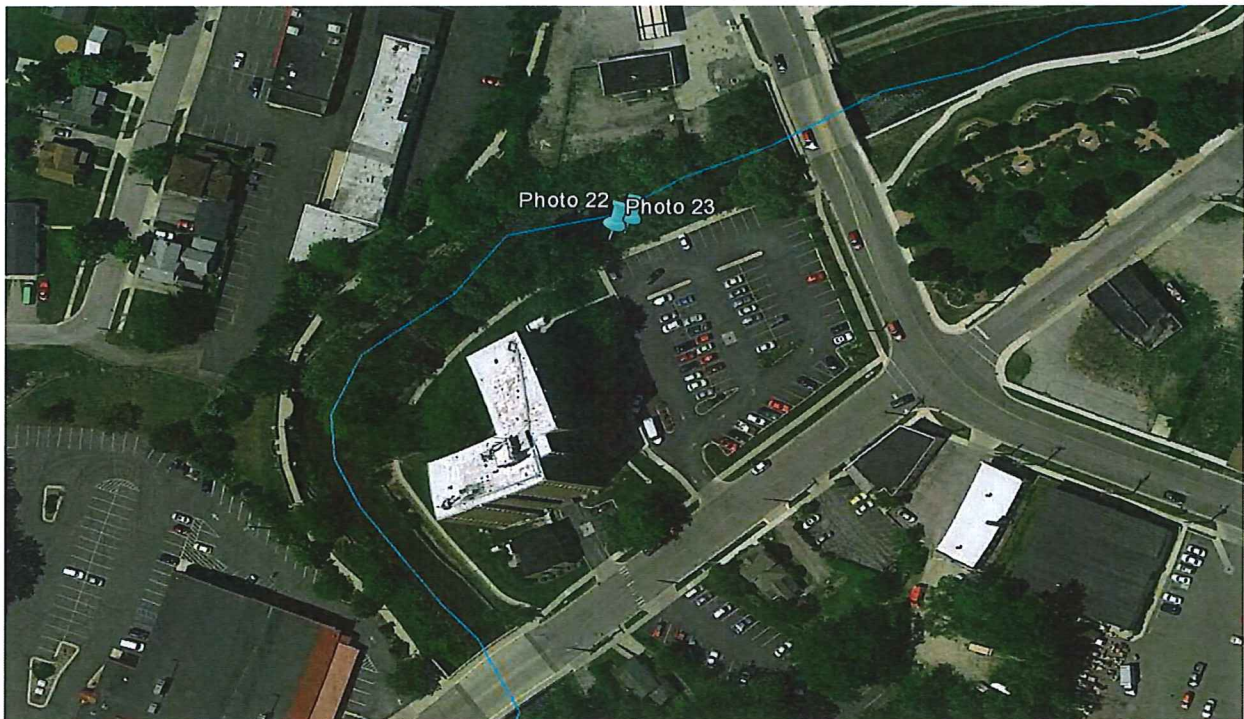




Photo 24 (Section 3 – north bank looking downstream): Rocky and shallow center of river

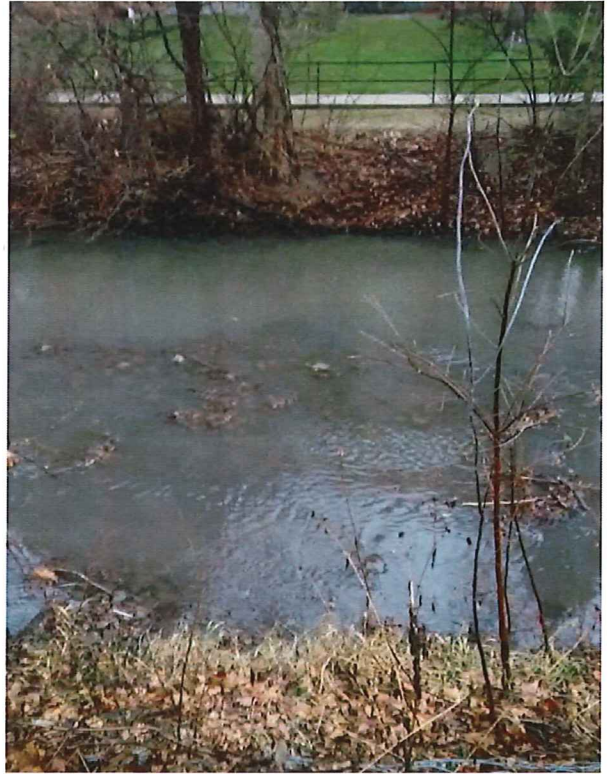
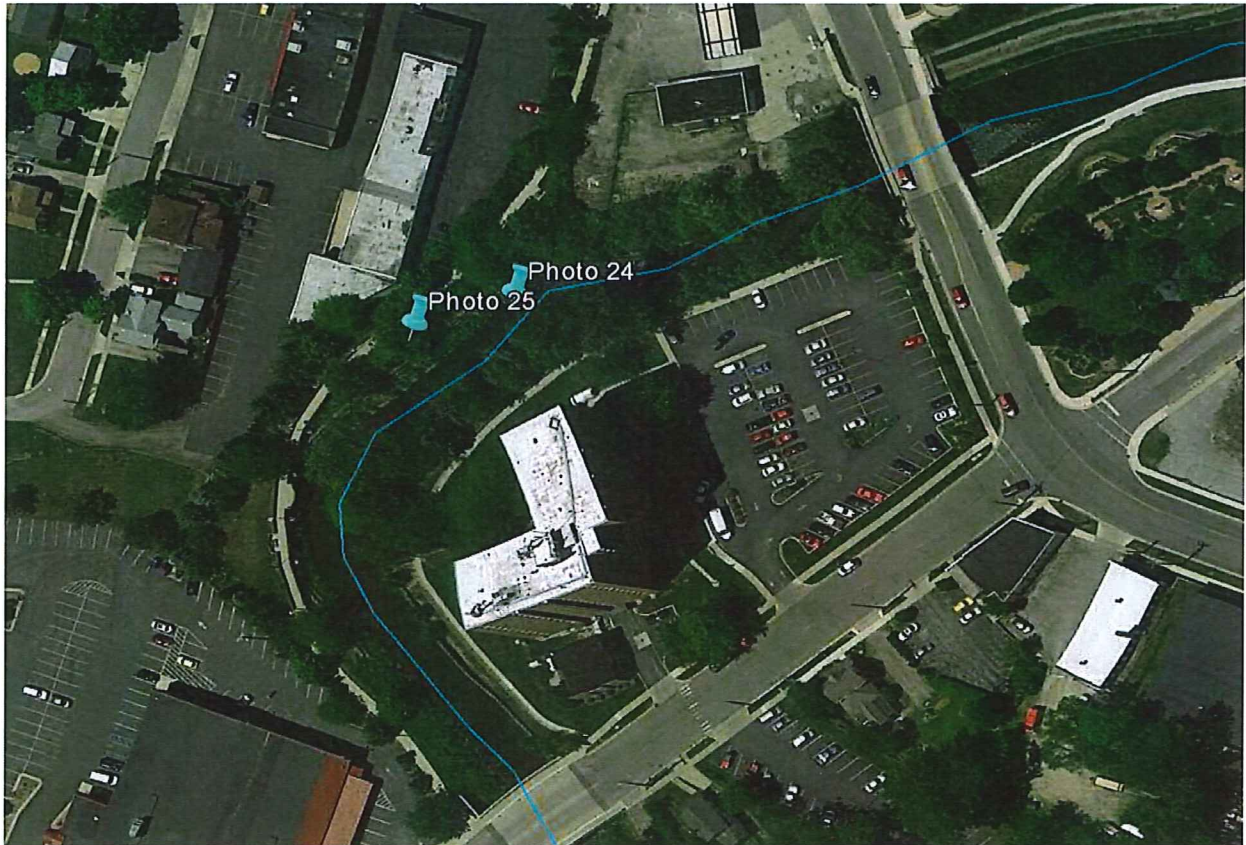


Photo 25 (Section 3 – north bank looking across river): Rocky and shallow center of river



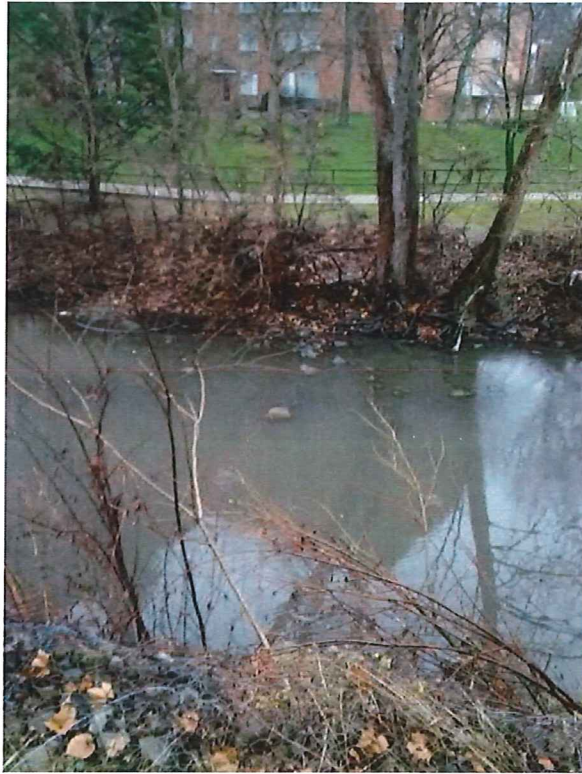
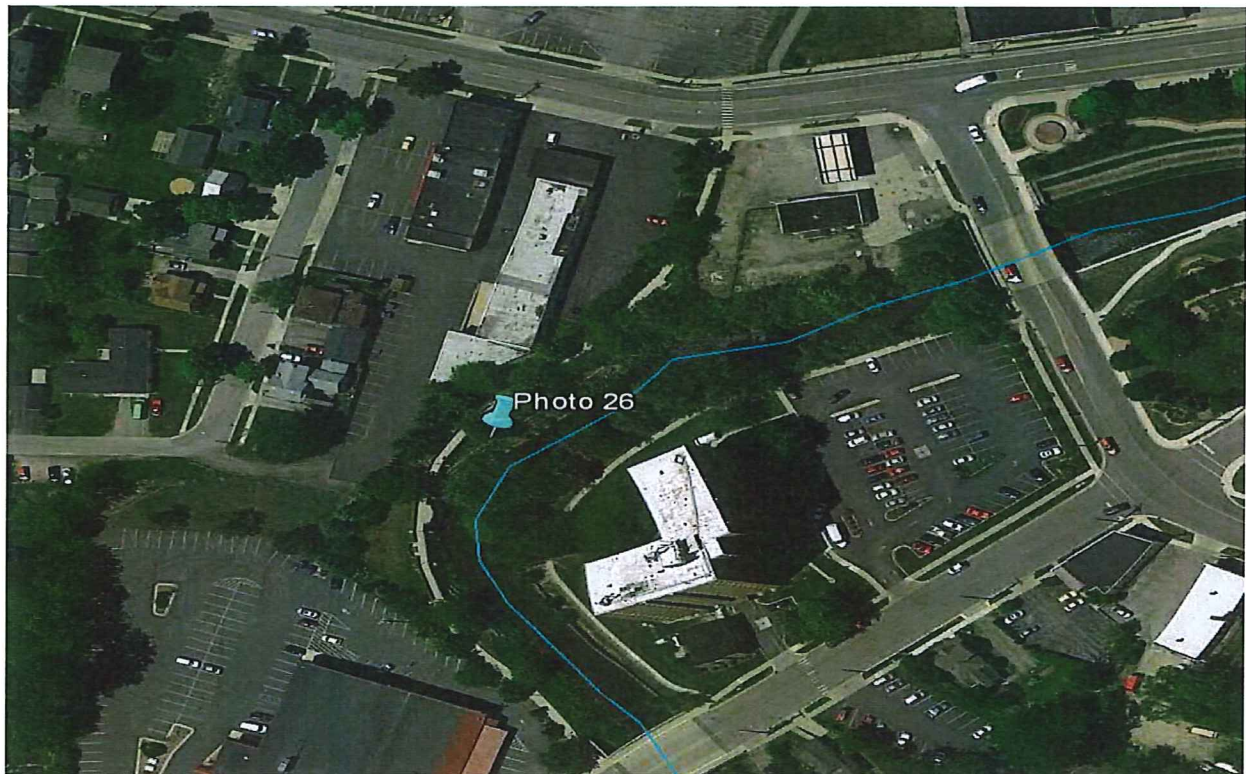
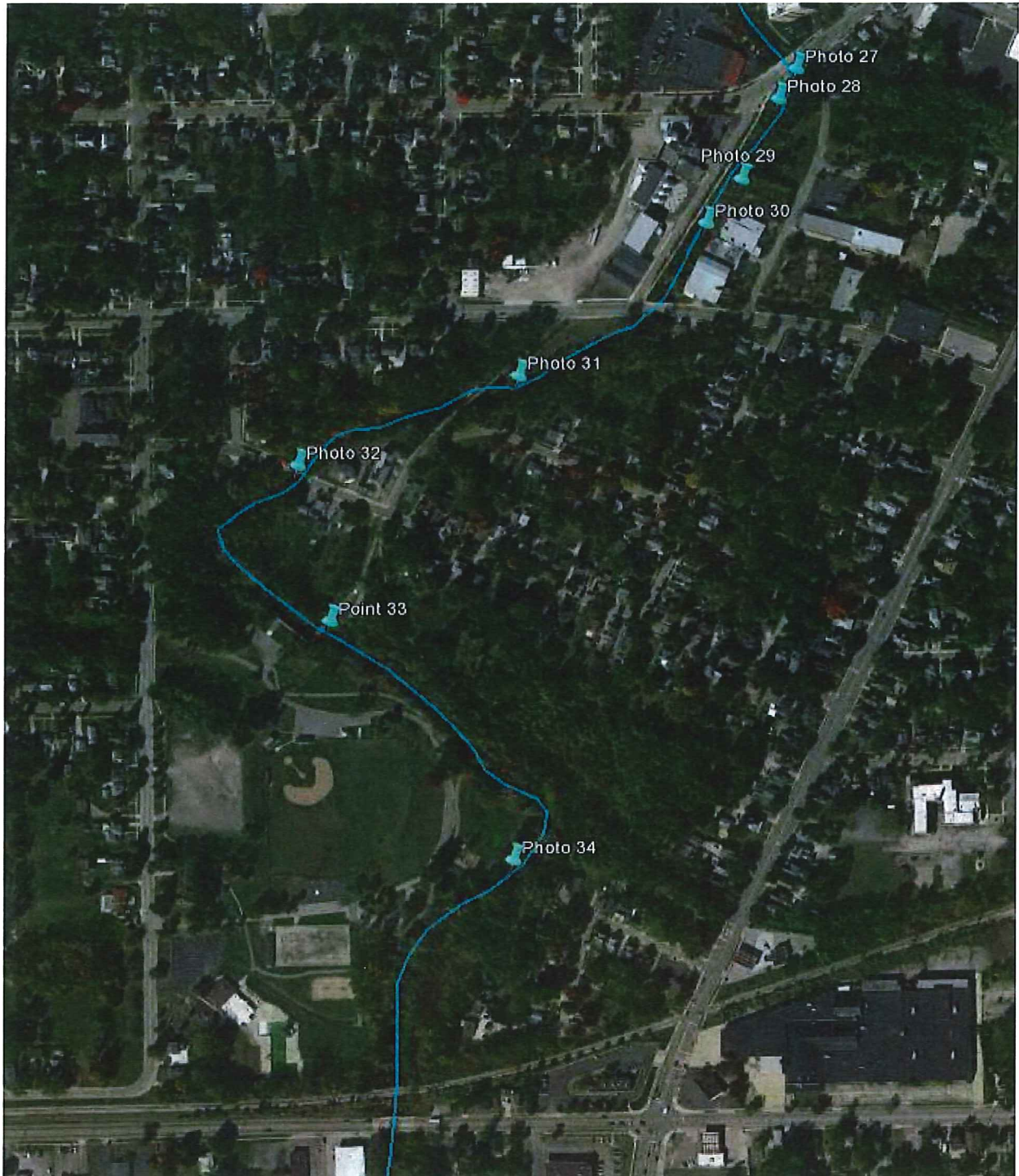


Photo 26 (Section 3 – north bank looking across river): Rocky and shallow near south bank of river



Section 4: College Avenue to Riverside Park



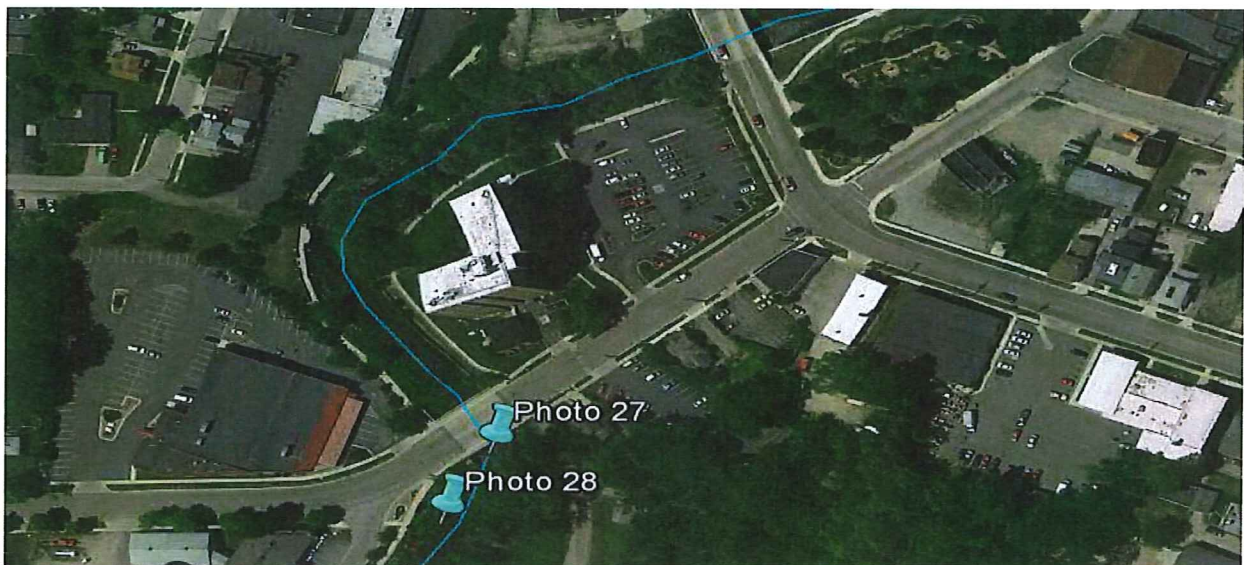
Locations of Depth Issues in Section 4 (Marked with Blue Pins)



Photo 27 (Section 4 – Looking down from College Avenue Bridge south side): Pipe breaks surface of water



Photo 28 (Section 4 – west bank looking across river): Large shallow rocks in river area



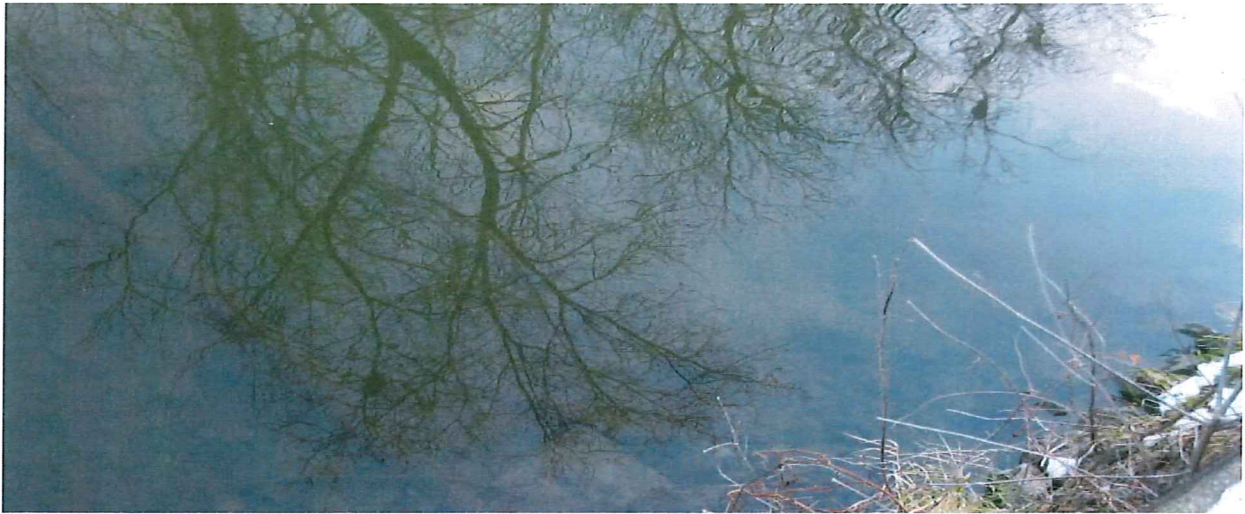


Photo 29 (Section 4 – west bank looking into river): Pipe and metal debris crossing through river



Photo 30 (Section 4 – west bank looking into river): Shallow area with metal debris

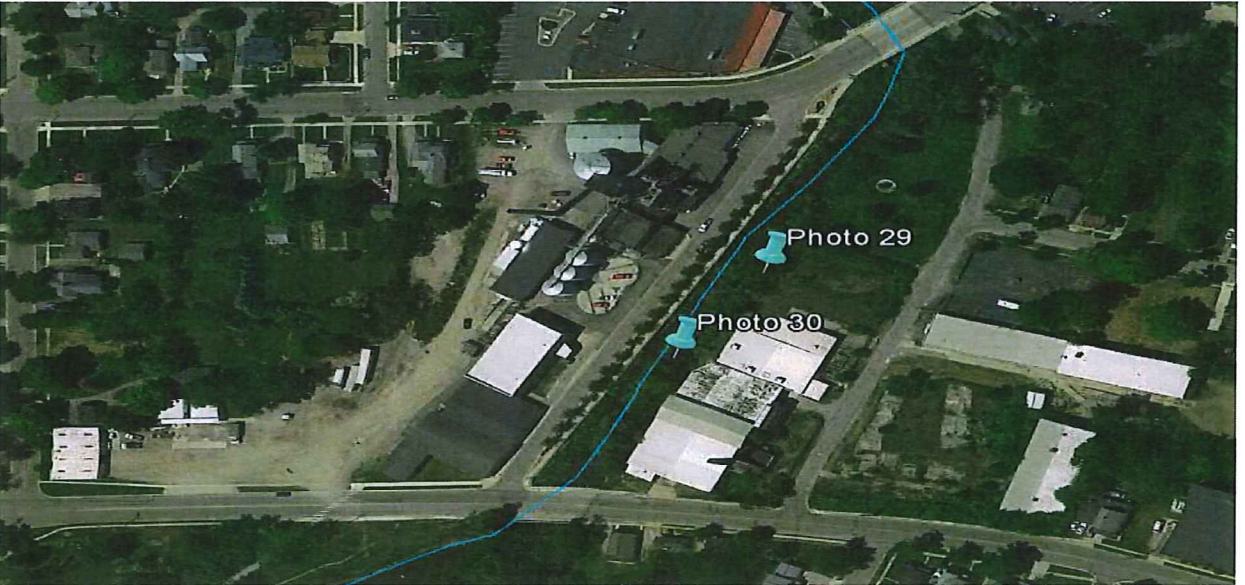




Photo 31 (Section 4 – north bank looking upstream): Rocky shallow zone near outfall



Photo 32 (Section 4 – north bank looking downstream under Merrick Street Bridge): Shallow and rocky under bridge

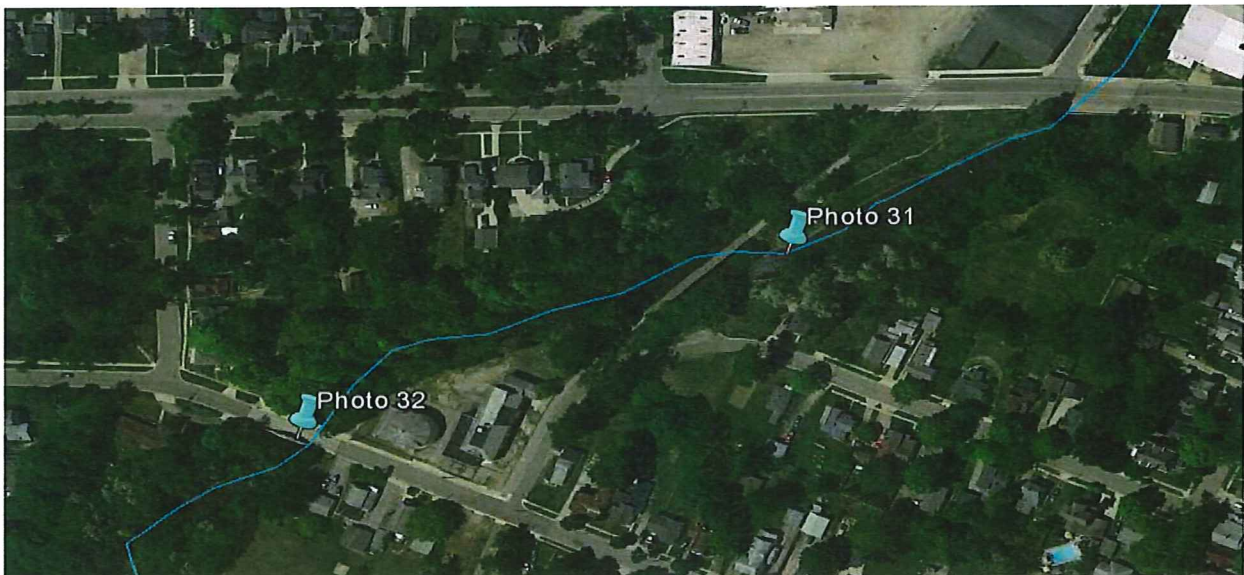
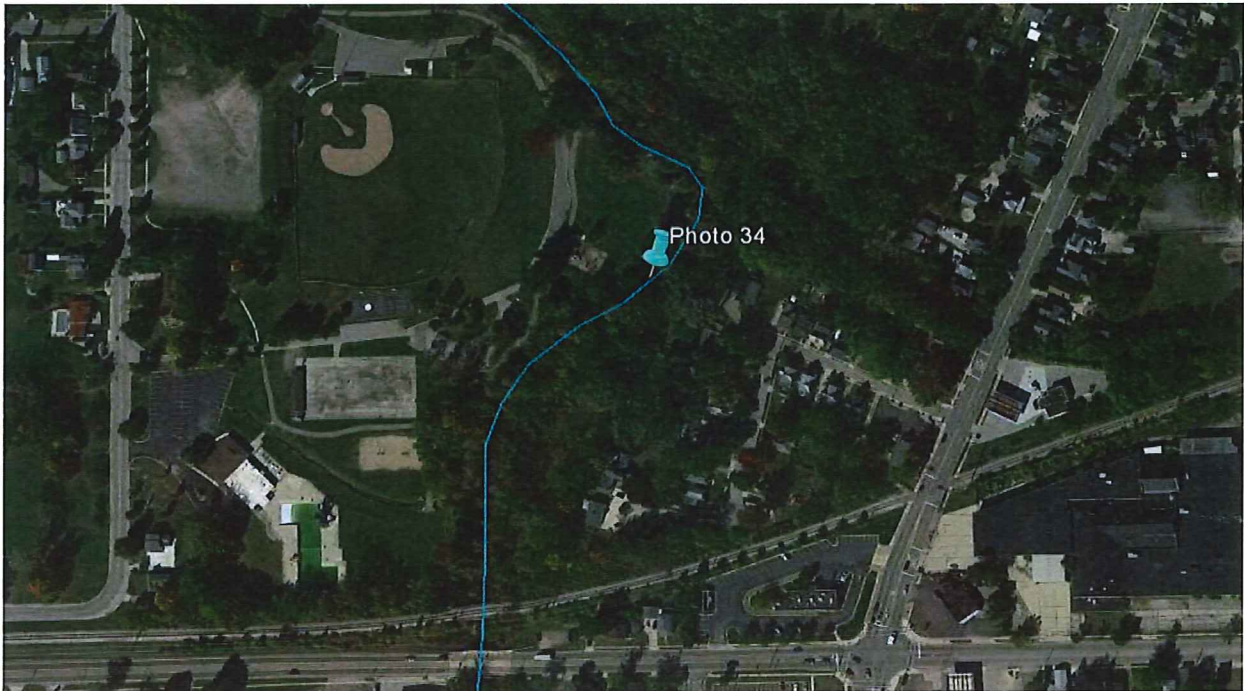
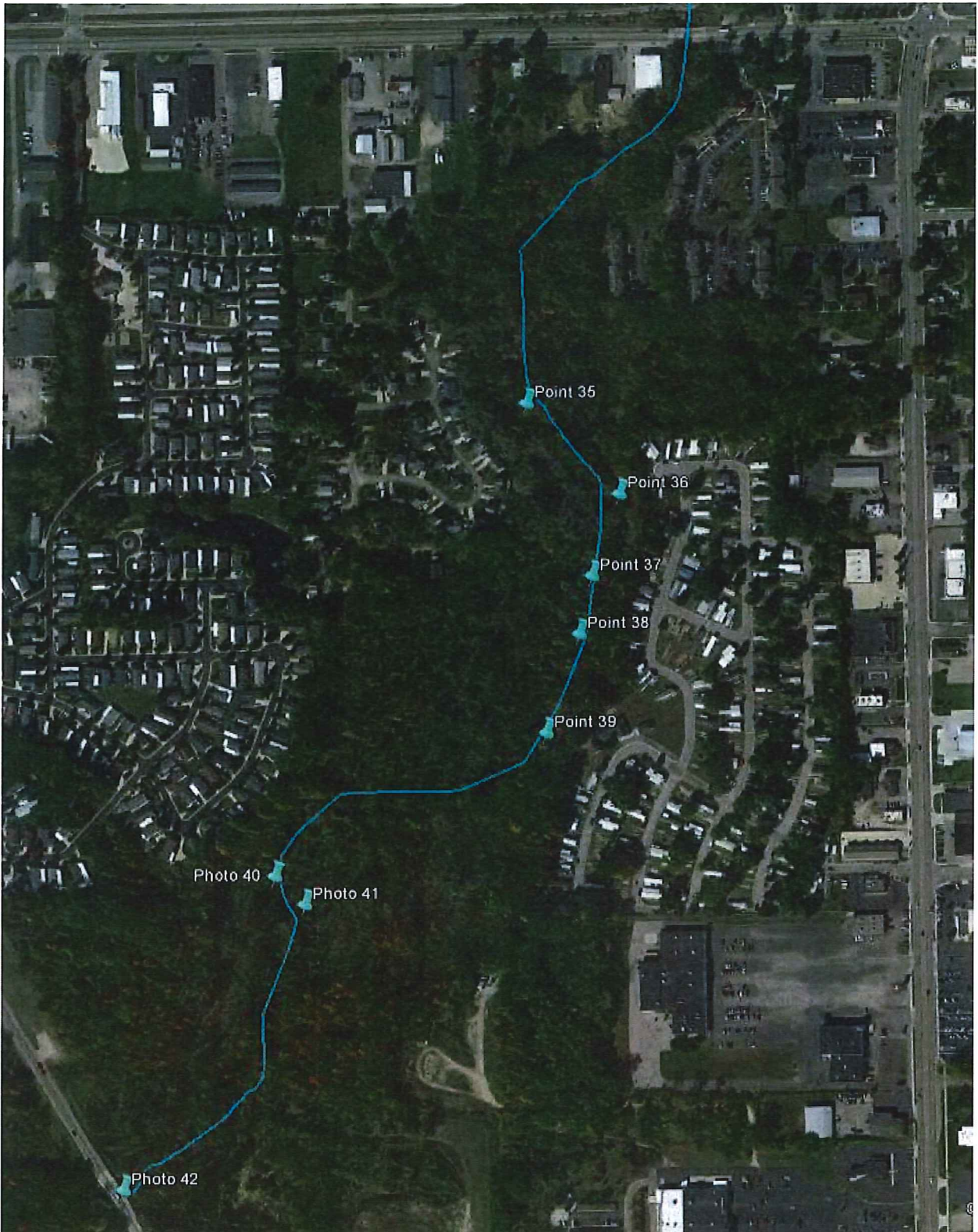




Photo 34 (Section 4 – north bank looking upstream): Shallow rocks under overhanging pipe



Section 5: Riverside Park to Highway 223



Locations of Depth Issues in Section 5 (Marked with Blue Pins)



Photo 40 (Section 5 – east bank looking across river at the bend): Shallow area near bend



Photo 41 (Section 5 – east bank looking across river): Smooth and shallow across this river section

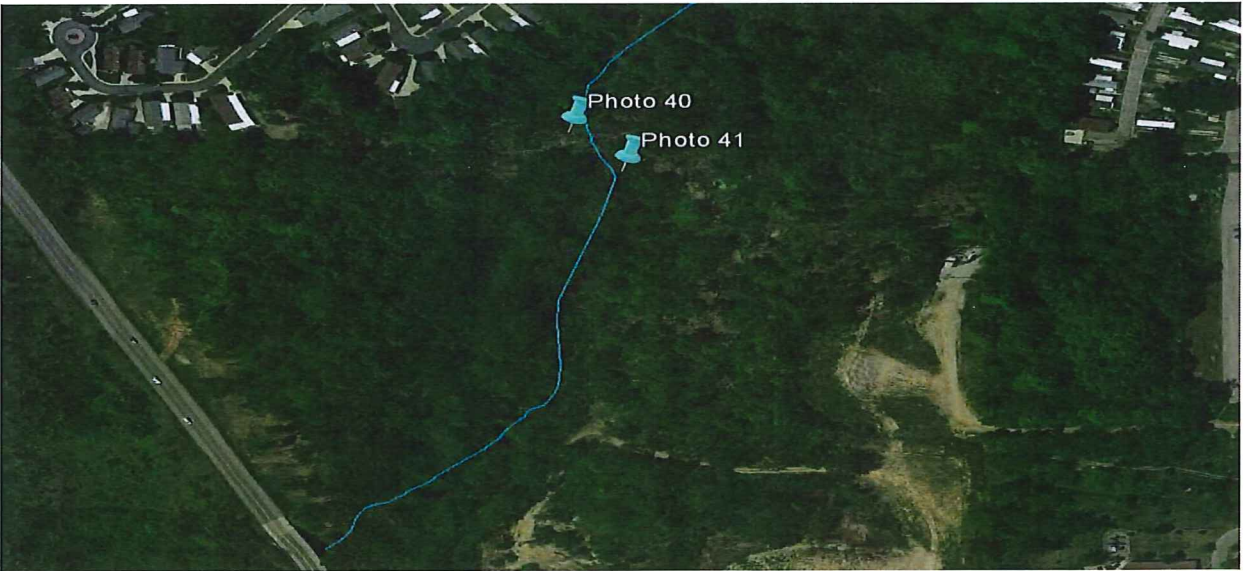




Photo 42 (Section 5 – south bank looking across river under Hwy 223): Shallow flow under bridge area

